

Council of Ministers Responsible for Transportation and Highway Safety

Canada's National Highway System Annual Report 2012



September 2013

Introduction

Canada's National Highway System is an evolution of the Trans-Canada Highway concept originally launched in 1949. Construction of the Trans-Canada Highway began in 1950 under the authority of the *Trans-Canada Highway Act*. In 1962 Prime Minister John Diefenbaker officially opened the Trans-Canada Highway, although construction continued until 1971. A key goal of the Trans-Canada Highway was to connect all the provinces together by highway, which was pursued through a cost-sharing partnership between federal and provincial governments to upgrade existing roadways to "Trans-Canada" standards. The Trans-Canada highway encompassed 7,821 km of highways spanning the width of the country from Victoria to St. John's.

The National Highway System (NHS) was established in 1988 by the Council of Ministers Responsible for Transportation and Highway Safety. The 24,500 kilometre network of key interprovincial and international highway linkages was identified through a federal-provincial-territorial cooperative study carried out over the period 1988 to 1992.

In September 2004 the Council of Ministers approved the addition of 2,700 kilometres of new routes to the NHS, as a result of a study undertaken by Transport Canada. In September 2005, following a comprehensive review of the NHS by a federal, provincial and territorial Task Force, further expansion of the system to include an additional 11,000 kilometres of routes was endorsed by the Council of Ministers.

In 2012 the National Highway System encompassed over 38,000 kilometres of key highway linkages that are vital to both the economy and to the mobility of Canadians. Over 95 percent of the NHS is owned and operated by provincial and territorial authorities. NHS roads under federal control (mostly roads through national parks and the Alaska Highway) account for about 3 percent of the NHS network and roads under municipal control account for about 2 percent. The federal government is also responsible for two major bridges in Montreal (Champlain and Jacques Cartier), and portions of the Bonaventure Expressway and the Honoré-Mercier Bridge.

The NHS comprises three categories of routes, each of which are defined by specific criteria that can be used to assess route eligibility:

Core Routes

- Key interprovincial and international corridor routes (including links to intermodal facilities and important border crossings)

Feeder Routes

- Key linkages to the Core Routes from population and economic centres (including links to intermodal facilities and important border crossings)

Northern and Remote Routes

- Key linkages to Core and Feeder routes that provide the primary means of access to northern and remote areas, economic activities and resources.

The information contained in the report that follows offers insight to the role played by the National Highway System, its performance, the state of its infrastructure and the investment being made in its restoration and improvement.

The report was assembled using statistical information provided by the federal, provincial and territorial departments of transportation, and while effort was taken to ensure completeness and consistency, it should be noted that data for municipal roads on the NHS was not readily available, and except where explicitly noted, is not included in the summaries.

The content of this report is structured as follows:

- **Part 1** provides an overview of the trends and changes which have occurred with the performance and condition of the National Highway System since 2006
- **Part 2** presents in greater detail the most recent information collected from jurisdictions on the performance and condition of the National Highway System (generally for 2011 and 2012).
- **Appendix 1** provides a detailed breakdown of the routes contained in the National Highway System as of December 31, 2012

Additional information on the National Highway System, including past reports and studies, can be found on the Internet at www.comt.ca.

Cover Picture:

Highway 1 Manitoba © Stan Milosevic www.manitobaphotos.com

Table of Contents

Highlights – Executive Summary	5
System Map	6
Part 1: Developments and Highlights 2006-2012	7
a) System Length and Route Inventory.....	7
b) Traffic and Travel	8
c) Safety	9
d) Border Crossings and Trade.....	10
e) Investment.....	11
f) Pavement Condition.....	13
g) Bridges and Structures	15
Part 2: National Highway System – 2012 Data by Jurisdiction	17
Appendix 1 - National Highway System Route Inventory	24

Highlights – Executive Summary

System Length

- The length of the National Highway System was 38,078 km as of December 2012, essentially unchanged since 2005.
 - the NHS constitutes about 3% of the length of the public road network in Canada

Traffic

- In 2011 the NHS carried nearly 130 billion vehicle-kilometers of travel, and over 18 billion vehicle-kilometers of truck travel.
 - the NHS carries nearly 40% of travel on all roads in Canada
- While travel on the National Highway System increased 8% from 2005 to 2011, traffic declined about 1% from 2010 to 2011.
 - 93% of travel on the NHS occurs on the Core Network.
- Truck travel on the NHS increased 3% over the 7 year period, but declined 3.5% from 2010 to 2011.
 - 94% of truck travel occurs on the Core Network.

Safety

- There were over 74,000 collisions on the National Highway System in 2011, resulting in 548 fatalities and over 22,000 injuries, however:
 - the number of injuries per year decreased 20% from 2005 to 2011.
 - the number of fatalities per year decreased 31% from 2005 to 2011.
 - nearly 80% of collisions on the NHS in 2011 resulted in property damage only.

Canada-US Trade and Tourism at NHS Border Crossings

- Over \$300 billion in trade with the United States occurs annually at border crossings on the NHS.
 - from 2007 to 2009 the value of trade at NHS border crossings dropped 21%.
 - from 2010 to 2012 trade rebounded, ending 2012 about 20% higher than in 2009.
- The value of tourism at Canada/US border crossings on the NHS is nearly \$13 billion per year

Investment

- Since 2006/07 \$24.6 billion has been invested in the National Highway System:
 - provincial and territorial governments ~ \$20.7 billion (84%)
 - federal government ~ \$3.3 billion (14%)
 - other sources ~ \$0.6 billion (2%)
- Over this period investment by NHS route category has been as follows:
 - Core Network ~ 90%
 - Feeder Network ~ 7%
 - Northern and Remote Network ~ 3%
- In fiscal year 2012/13 \$3.9 billion was invested in the National Highway System, an increase of 15% from the previous year.

Pavement and Road Surface Condition

- Since 2006 the length of the NHS with pavement condition rated as “good” has increased by 4,300 km (20%).
- The length of unpaved NHS has decreased by over 1,000 km (29%).

Bridges and Structures

- The number of bridges which are less than 10 years old increased 61% from 2006 (896) to 2012 (1,438), reflecting increased investment and new construction.
- Since 2007 nearly 950 bridges on the NHS are new or have undergone major rehabilitation.
- The number of bridges which are over 50 years old increased 67% from 2006 (870) to 2012 (1,454).

System Map



Part 1: Developments and Highlights 2006-2012

a) System Length and Route Inventory

	Network Length (km)						
	2006	2007	2008	2009	2010	2011	2012
Core	27,613	27,631	27,625	27,601	27,656	27,673	27,670
Feeder	4,493	4,495	4,496	4,492	4,493	4,491	4,491
Northern/Remote	5,922	5,921	5,917	5,917	5,920	5,920	5,918
Total	38,026	38,047	38,038	38,010	38,069	38,084	38,078

Highlights:

- The length of the National Highway System has not changed significantly since a major review and expansion was approved by the Council of Ministers in 2005.
- Adjustments have been made annually in the length of the network due to:
 - Changes in route alignments resulting from construction
 - Changes in route segments included in the NHS when bypasses are completed
 - Corrections to route segment lengths resulting from new measurements.
- Since 2006 the distribution of routes within the three NHS categories has remained relatively unchanged:
 - Core Network ~ 73%
 - Feeder Network ~ 12%
 - Northern and Remote Network ~ 15%

b) Traffic and Travel

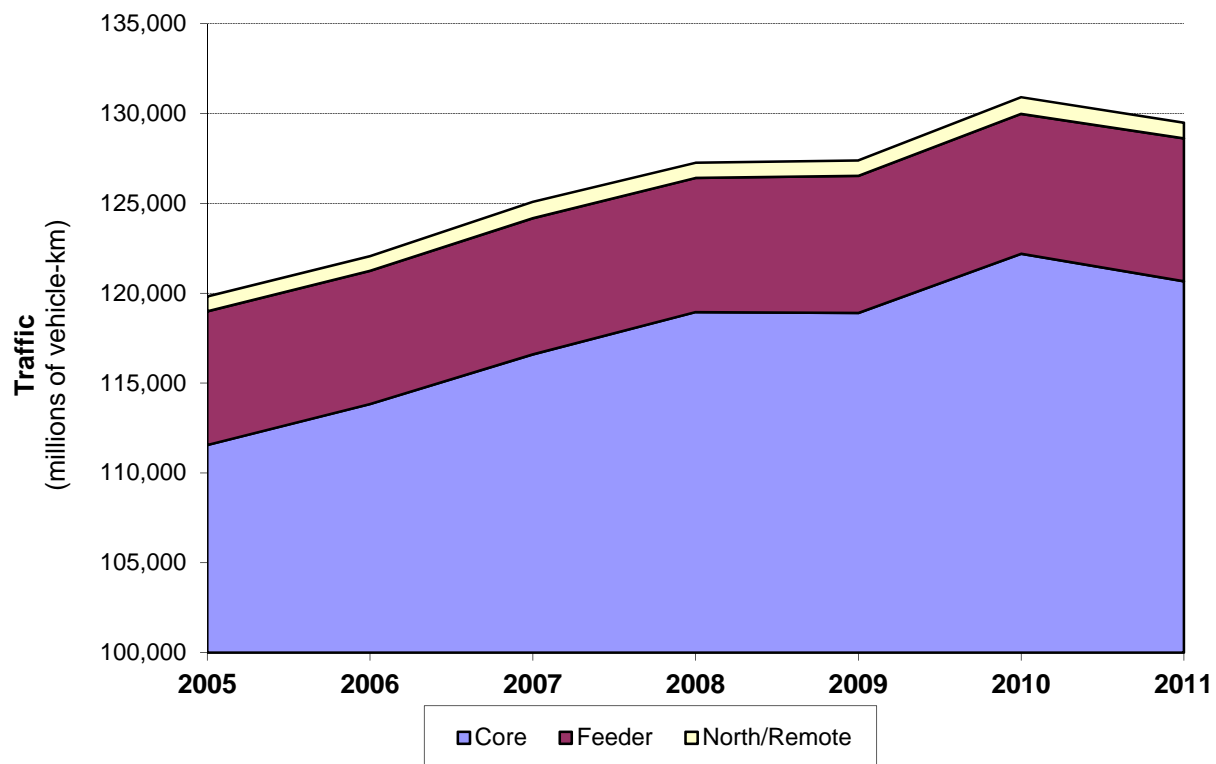
Travel (millions of Vehicle-Km)

	2005	2006	2007	2008	2009	2010	2011 ¹	Change 2005-11
Core	111,551	113,829	116,593	118,947	118,896	122,194	120,664	+ 8%
Feeder	7,439	7,414	7,578	7,466	7,633	7,784	7,950	+ 7%
Northern/Remote	828	818	913	845	859	930	877	+ 6%
Total	119,817	122,061	125,084	127,258	127,388	130,908	129,491	+ 8%

Truck Travel (millions of Vehicle-Km)

	2005	2006	2007	2008	2009	2010	2011 ¹	Change 2005-11
Core	17,079	17,977	18,187	18,543	18,814	18,163	17,492	+ 2%
Feeder	888	913	926	933	937	881	903	+ 2%
Northern/Remote	101	126	138	130	160	205	178	+ 76 %
Total	18,068	19,016	19,251	19,606	19,911	19,249	18,572	+ 3%

Travel on the National Highway System 2005-2011



Highlights:

- Travel on the National Highway System increased 8% from 2005 to 2011
 - 93% of travel on the NHS occurs on the Core Network
- Truck travel on the NHS increased 3% over the period.
 - Almost 95% of truck travel occurs on the Core Network
 - Truck travel on the Northern/Remote network has almost doubled since 2005

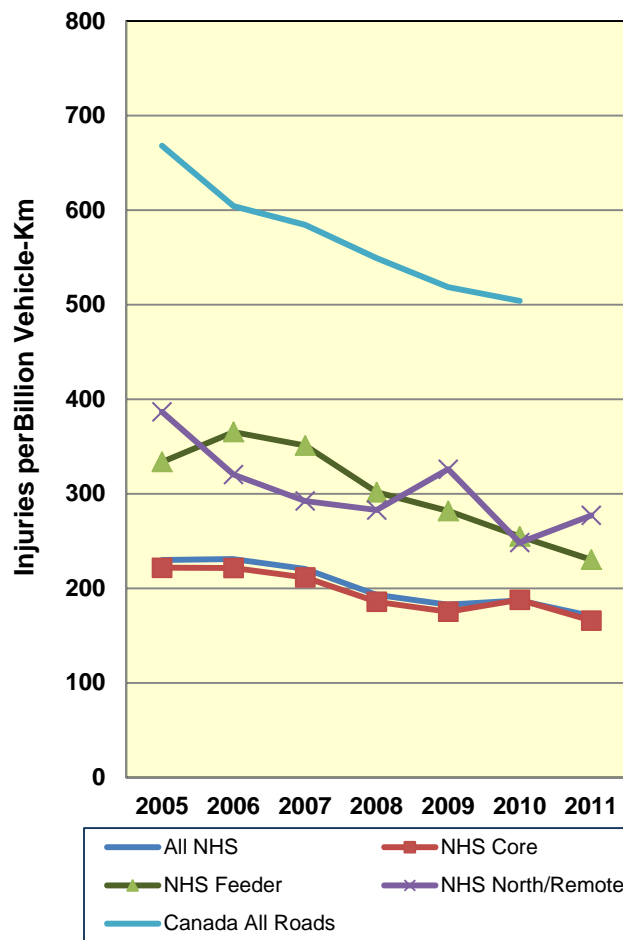
¹ Includes traffic data for Ontario and New Brunswick from 2010; data for 2011 was not available

c) Safety

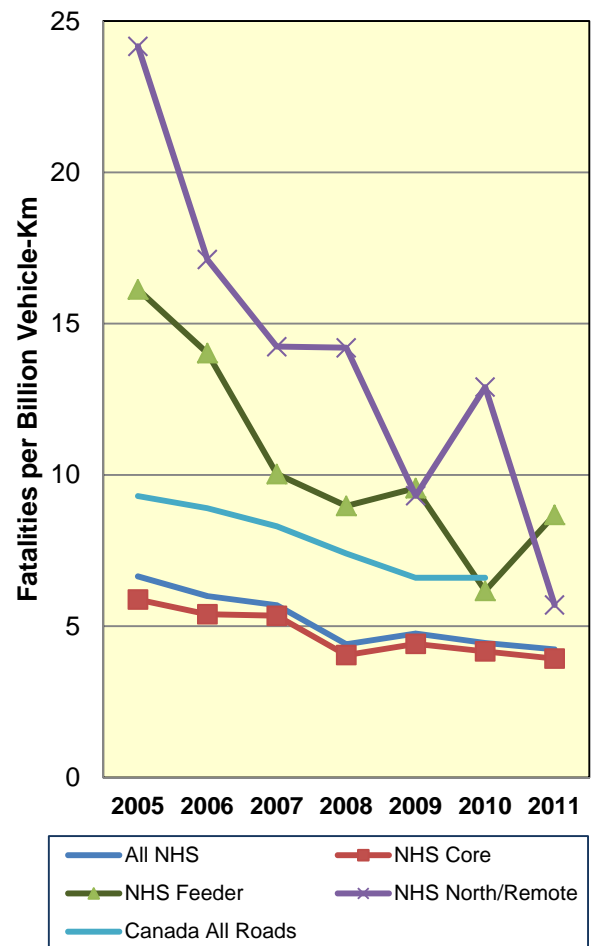
Collisions, Injuries and Fatalities on the National Highway System

	2005	2006	2007	2008 ²	2009 ³	2010 ⁴	2011 ⁴	Change 2005-11
Collisions	80,728	83,225	84,503	79,496	76,799	71,647	74,425	- 8%
Injuries	27,539	28,185	27,585	24,588	23,274	24,951	22,093	- 20%
Fatalities	796	732	712	560	606	569	548	- 31%

Injury Rates



Fatality Rates



Highlights:

- The number of collisions on the National Highway System decreased 8% from 2005 to 2011:
 - the number of injuries per year decreased 20%
 - the number of fatalities per year dropped 31% over the period.
- Nearly 80% of collisions on the National Highway System in 2011 resulted in property damage only.
- The injury rate for collisions on the National Highway System is considerably lower (~ 50%) than for Canada's road network as a whole.

² Data for Manitoba is from 2007 and for Nova Scotia is from 2006.

³ Data for Nova Scotia is from 2006 and for Newfoundland and Labrador is from 2010.

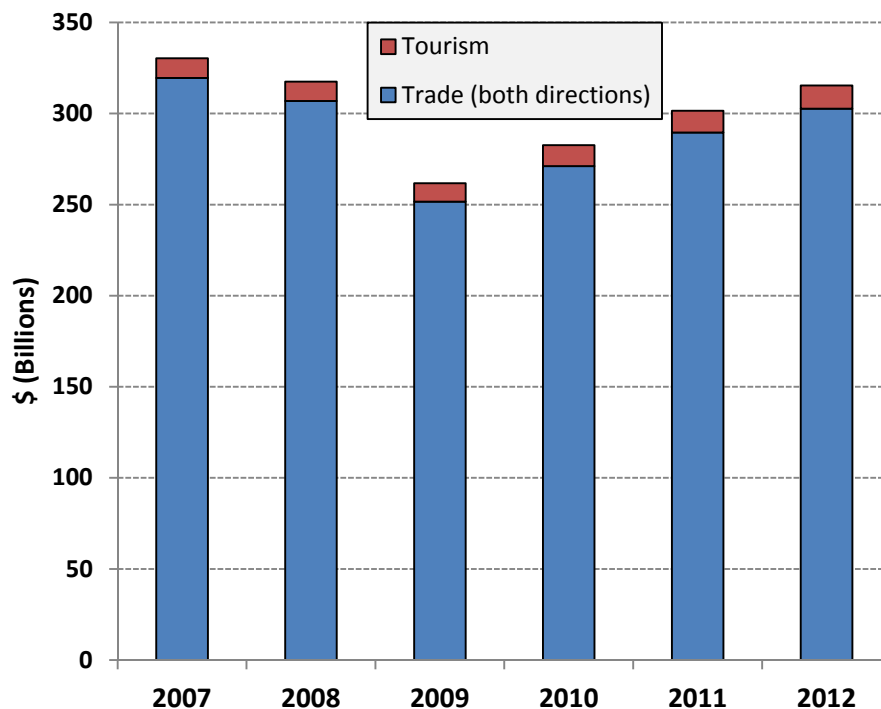
⁴ Collision and injury data for Nova Scotia is from 2006

d) Border Crossings and Trade

Value of Canada/US Trade and Tourism at
NHS Border Crossings (\$ billions)

	2007	2008	2009	2010	2011	2012	Change
Trade (both directions)	319.5	306.9	251.6	271.1	289.6	302.7	- 5%
Tourism	10.8	10.6	10.1	11.5	11.9	12.7	+ 18%
Total	330.3	317.5	261.7	282.6	301.5	315.4	- 5%

Canada/US Trade and Tourism at
NHS Border Crossings



Highlights:

- The value of trade across Canada/US border at crossings on the NHS dropped 21% from 2007 to 2009 due to the economic recession.
- Trade returned to growth from 2010 to 2012, ending 2012 20% higher than the level reported in 2009, but still 5% below the value reported in 2007.
- The value of tourism at Canada/US border crossings on the NHS also declined from 2007 to 2009, but rebounded in 2010 and 2011 resulting in an 18% increase over the five year period.

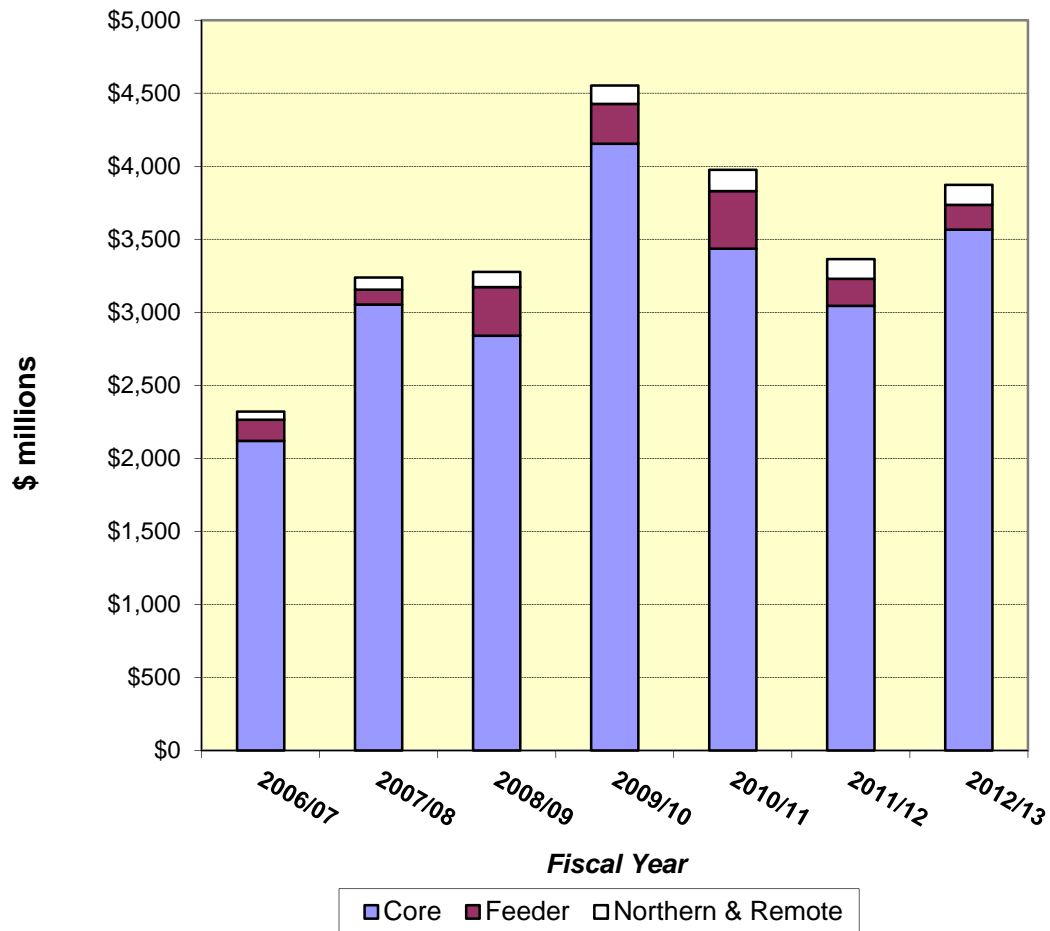
⁵ The 2007-2010 figures for the value of tourism were revised upward from previous reports due to a change in methodology (using actual annual spending per vehicle data rather than a uniform annual spending figure).

e) Investment

Expenditures (\$ millions)

	2006	2007	2008	2009	2010	2011	2012	Annual Average
Core	\$ 2,120.2	\$ 3,053.3	\$ 2,839.6	\$ 4,154.5	\$ 3,436.2	\$3,044.9	\$ 3,572.0	\$3,174
Feeder	\$ 144.4	\$ 102.3	\$ 333.4	\$ 272.2	\$ 393.8	\$184.3	\$ 169.5	\$229
North/Remote	\$55.9	\$ 82.7	\$ 103.6	\$ 126.0	\$ 145.9	\$135.0	\$ 143.8	\$113
Total	\$ 2,320.5	\$ 3,238.3	\$ 3,276.6	\$ 4,552.7	\$ 3,975.9	\$3,364.2	\$3,885.3	\$3,516

Investment in the National Highway System – 2006 to 2012

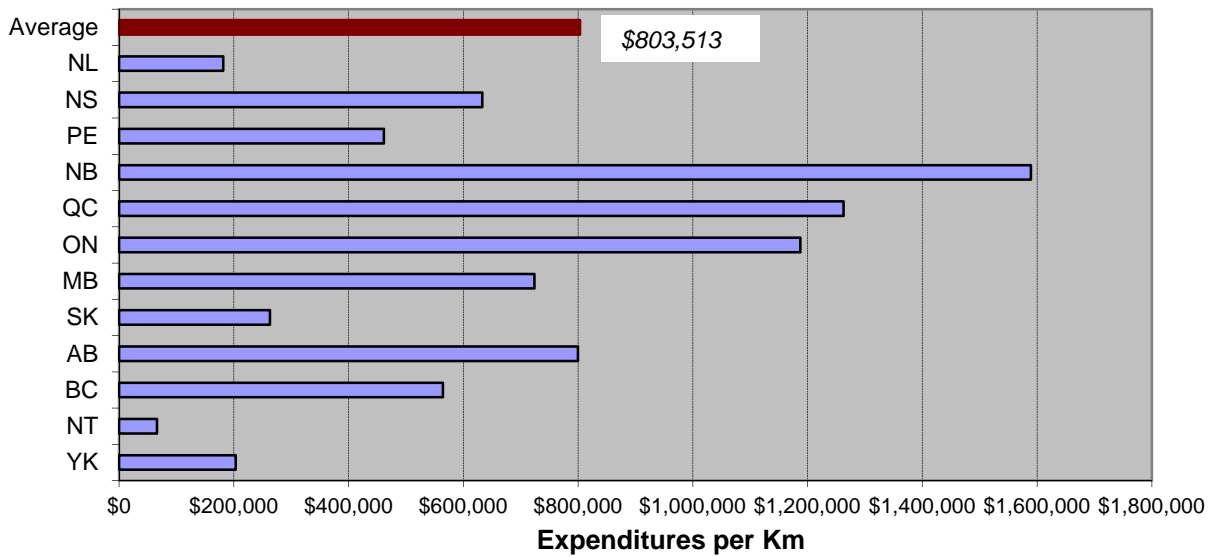


Highlights:

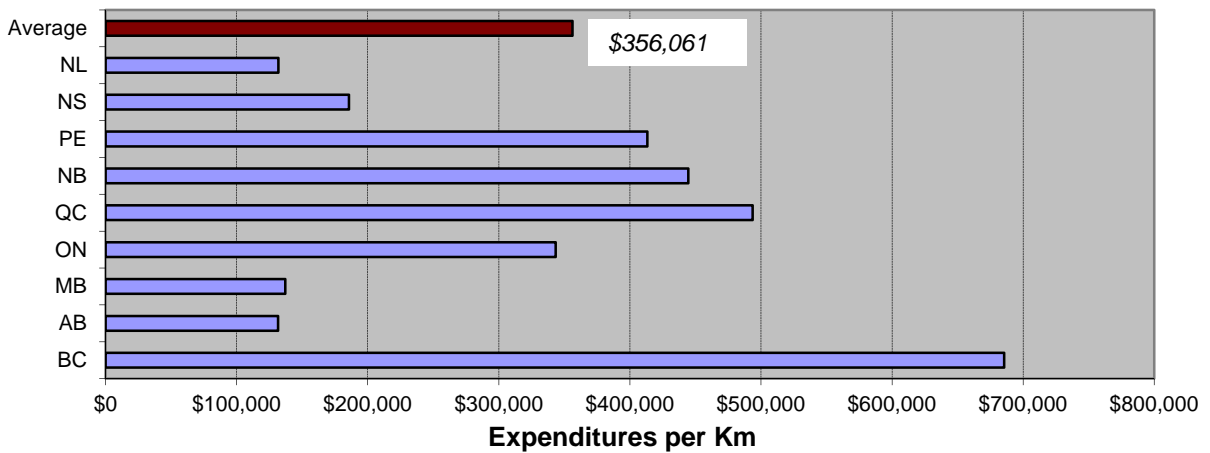
- In fiscal year 2012/13 nearly \$3.9 billion was invested in the National Highway System.
- Since 2006/07 \$24.6 billion has been invested in the National Highway System:
 - Provincial and territorial governments ~ \$20.7 billion (84%)
 - Federal government ~ \$3.3 billion (14%)
 - Other sources ~ \$0.6 billion (2%)
- Over this period investment by NHS route category has been as follows:
 - Core Network ~ 90%
 - Feeder Network ~ 7%
 - Northern and Remote Network ~ 3%

Investment in the National Highway System – 2006 to 2012

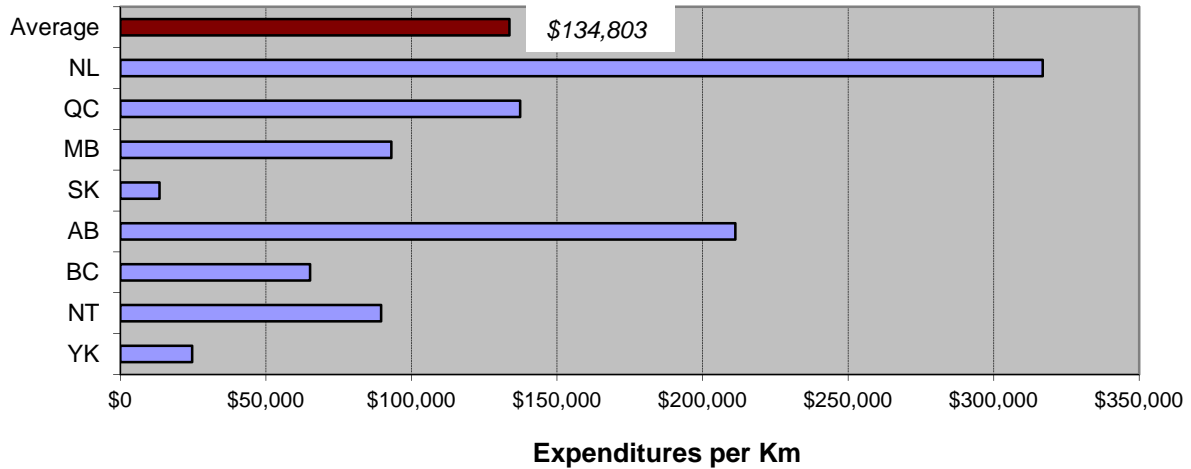
Core Route Network: Expenditures per Km



Feeder Route Network: Expenditures per Km



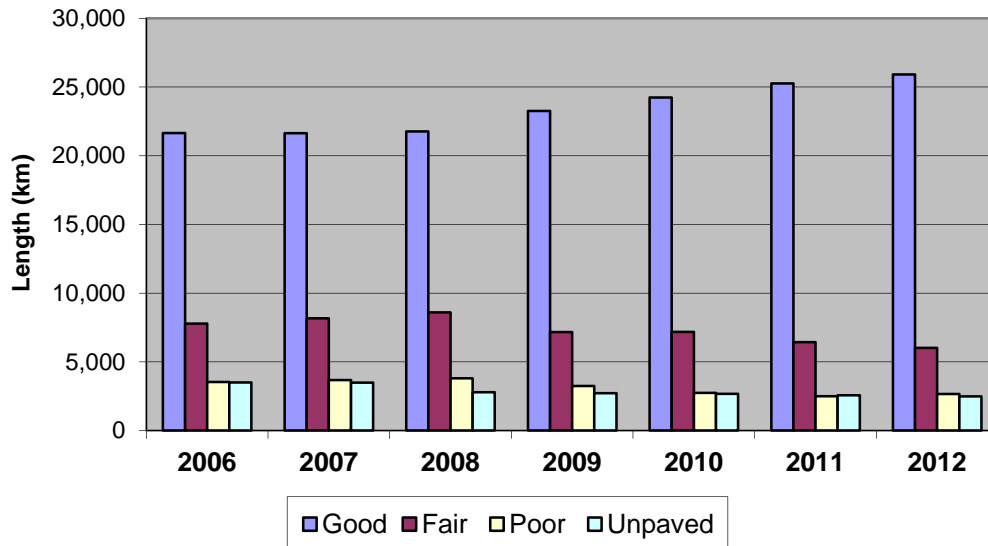
Northern and Remote Route Network: Expenditures per Km



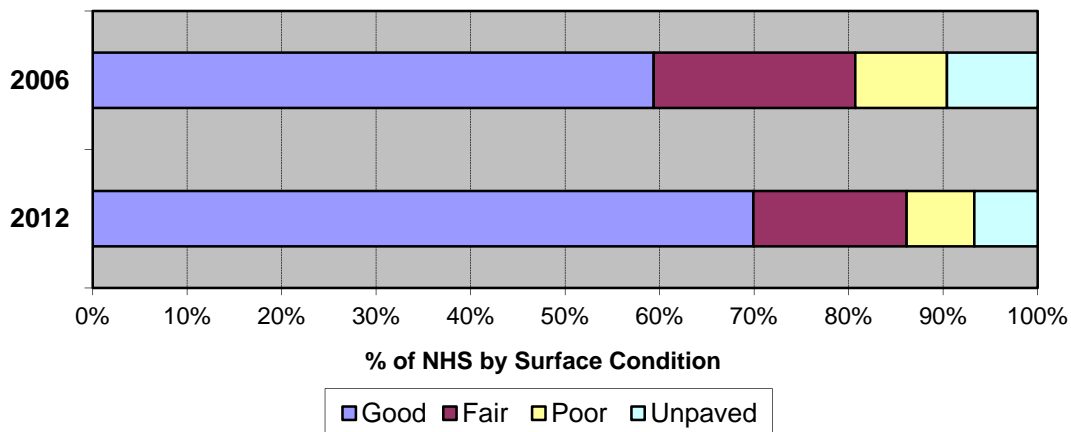
f) Pavement Condition

National Highway System: Surface Condition Changes 2006-2012⁶

	2006	2007	2008	2009	2010	2011	2012
Paved – Good	21,649	21,639	21,768	23,257	24,234	25,266	25,917
Paved - Fair	7,781	8,167	8,604	7,169	7,174	6,435	6,011
Paved – Poor	3,537	3,671	3,799	3,245	2,743	2,496	2,656
Unpaved	3,501	3,489	2,792	2,720	2,667	2,566	2,484



National Highway System: Surface Condition Changes 2006 vs 2012



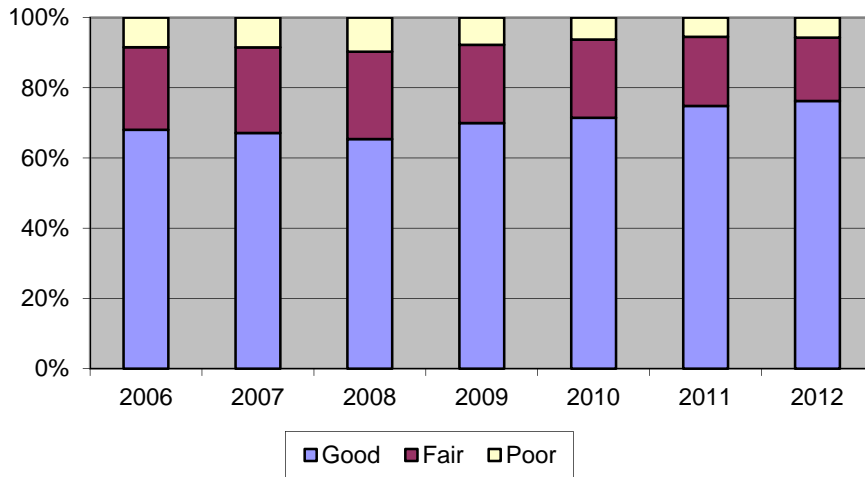
Highlights:

- Since 2006 the length of the NHS with pavement condition rated as “good” has increased 20% (~ 4,269 km).
- The length with pavement condition rated as “poor” has decreased 25% (~ 881 km).
- The length of unpaved NHS has decreased by 29% (~ 1,017 km)

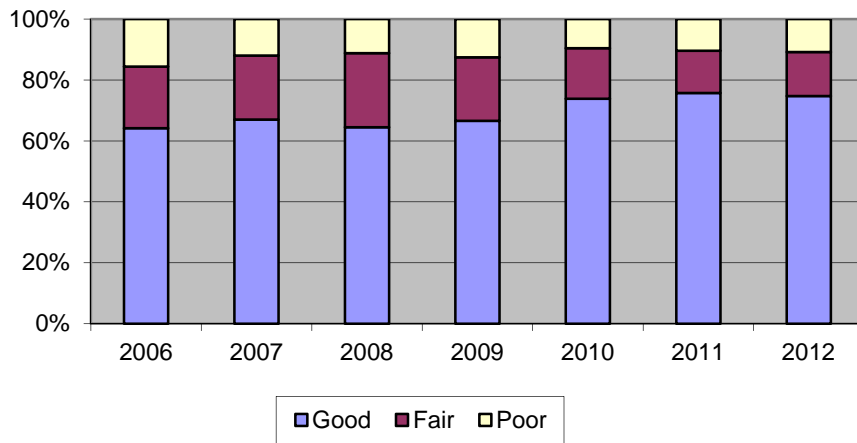
⁶ Pavement condition rating information provided by jurisdictions is not based on identical criteria and thresholds; with some variations in the factors considered and approaches used to classify pavements as good, fair or poor. Totals may not equal the length of the entire NHS as pavement rating data is not available for all sections.

NHS Surface Condition 2006-2012

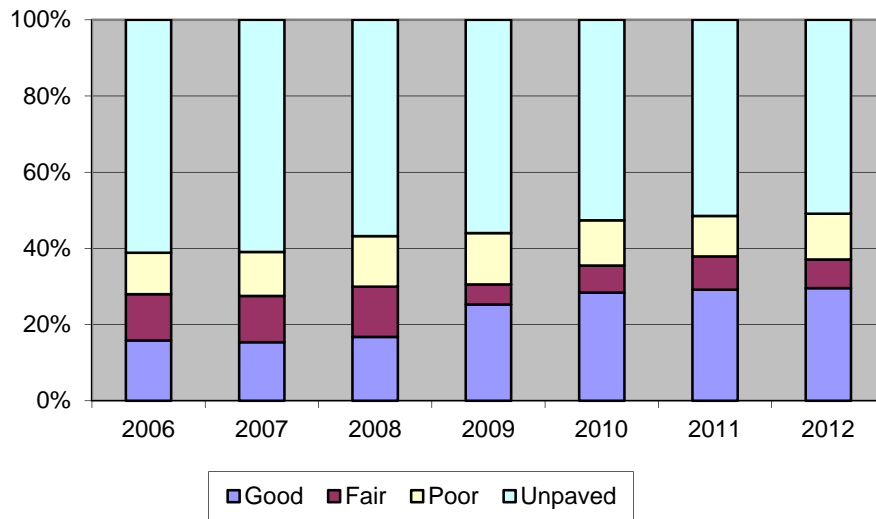
Core Network



Feeder Network



Northern Remote Network

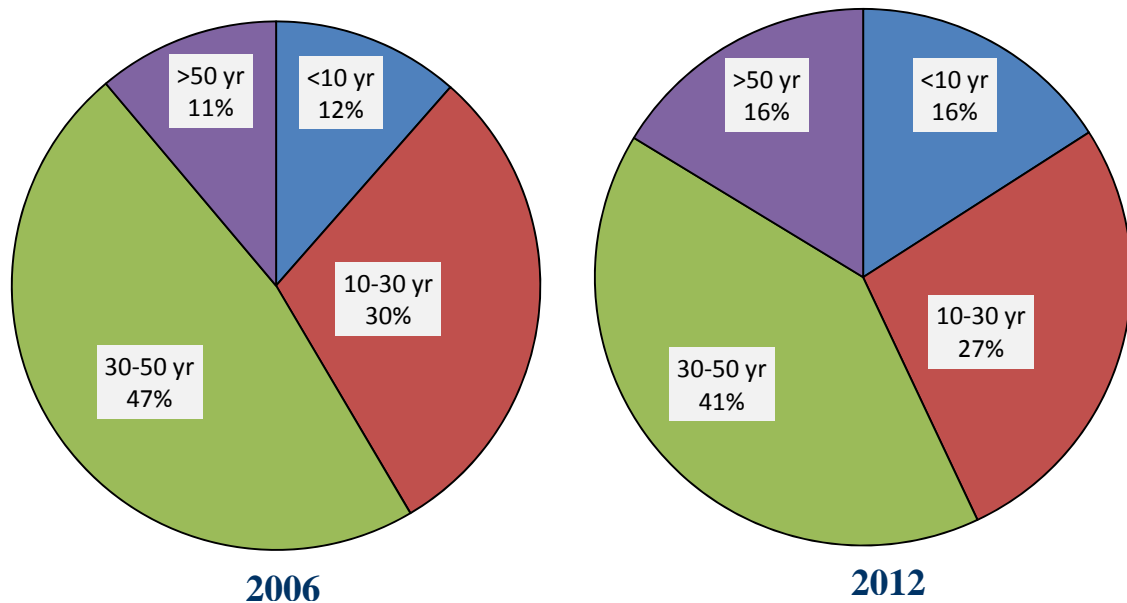


g) Bridges and Structures

Number of Bridges and Structures on the NHS⁷

	2006	2007	2008	2009	2010	2011	2012
Core	6,676	6,825	7,291	7,401	7,553	7,630	7,723
Feeder	813	808	856	876	882	893	900
Northern/Remote	299	298	308	308	314	316	306
Total	7,788	7,931	8,455	8,585	8,749	8,839	8,929

**NHS Bridges and Structures:
Inventory Age Profile 2006 vs. 2012**

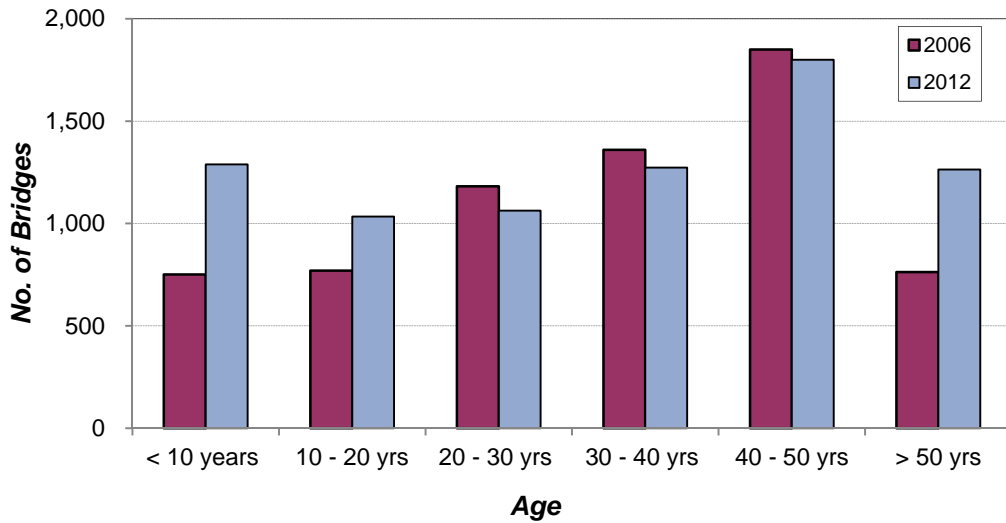


Highlights:

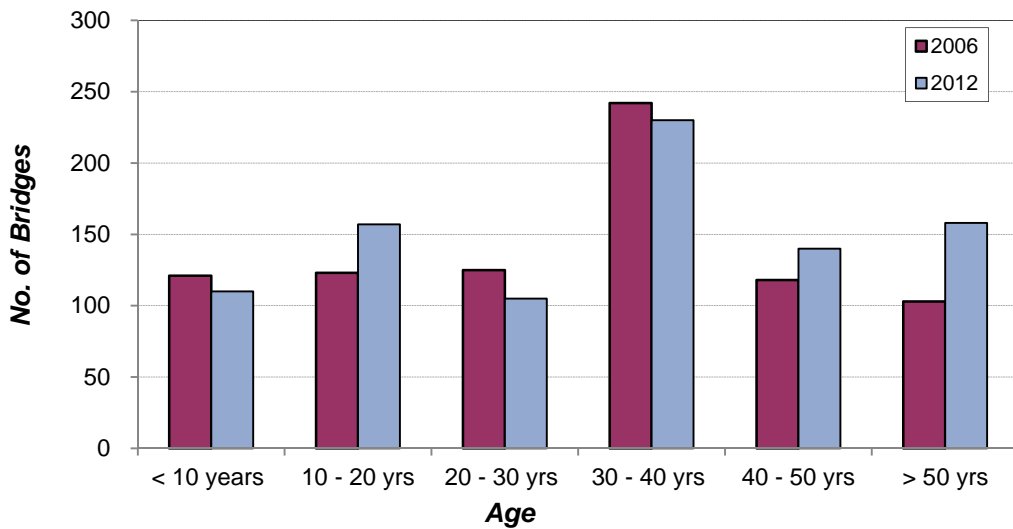
- Over the period 2006-2012 the number of bridges and structures reported on the NHS increased by 15% (due in part to adoption of a common definition and changes in the bridge inventory systems maintained by jurisdictions)
- The number of bridges that are less than 10 years old increased 61% from 2006 (896) to 2012 (1,438) as a reflection of increased investment and new construction.
 - Nearly 950 bridges are new or have had major rehabilitation work since 2007.
- The number of bridges that are over 50 years old increased 67% from 2006 (870) to 2012 (1,454).

⁷ Includes all bridges and structures with a span greater than 3.0 m (including large culverts)

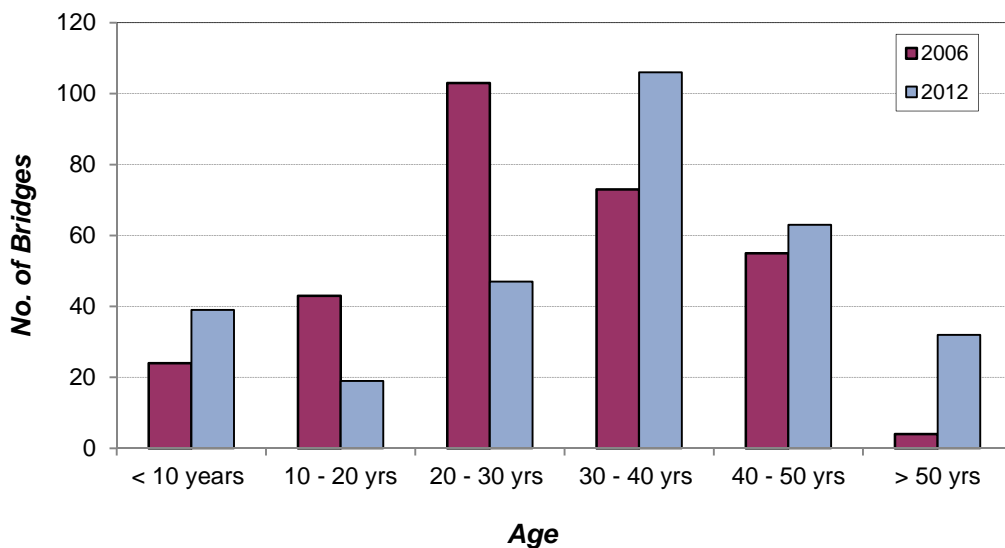
NHS Core Routes: Bridge Age Profile



NHS Feeder Routes: Bridge Age Profile



NHS Northern and Remote Routes: Bridge Age Profile



Part 2: National Highway System – 2012 Data by Jurisdiction

National Highway System Length (December 2012)

Jurisdiction	Core Network (km)	Feeder Network (km)	Northern & Remote Network (km)	Total – National Highway System (km)
Yukon	1,068.6		947.9	2,016.5
Northwest Territories	575.6		847.2	1,422.8
Nunavut				
British Columbia	5,869.3	446.7	724.0	7,040.0
Alberta	4,036.2	215.5	196.5	4,448.3
Saskatchewan	2,442.0		236.3	2,678.3
Manitoba	982.3	741.9	368.2	2,092.4
Ontario	6,130.7	705.6		6,836.3
Québec	3,452.0	765.4	1,435.0	5,652.4
New Brunswick	994.7	833.8		1,828.5
Prince Edward Island	208.2	188.0		396.2
Nova Scotia	902.6	295.5		1,198.1
Newfoundland and Labrador	1007.6	298.0	1,163.0	2,468.6
Total NHS Length (km)	27,669.8	4,490.5	5,918.1	38,078.3

The length information is based on the centerline distance of a roadway between start and end points (rather than lane-kilometers or “two-lane equivalent” lengths).

Travel and Traffic (2011)

Vehicle Kilometers of Travel 2011

(millions)

	Core	Feeder	Northern & Remote	Total
YT	277		78	355
NT	89		32	121
BC	15,190	1,182	88	16,460
AB	12,761	363	53	13,177
SK	4,892		140	5,032
MB	2,402	322	103	2,828
ON⁸	48,754	1,406		50,160
QC	26,500	2,270	280	29,050
NB⁸	3,225	1,188		4,413
PE	489	291		780
NS	3,371	599		3,970
NL	2,714	329	103	3,146
Total	120,664	7,950	877	129,491

Vehicle Kilometers of Truck Travel 2011

(millions)

	Core	Feeder	Northern & Remote	Total
YT	14		5	19
NT	17		7	24
BC	2,315	122	18	2,455
AB	1,520	26	12	1,558
SK	1,051		14	1,065
MB	443	56	13	513
ON⁸	7,592	158		7,750
QC	3,270	310	75	3,655
NB⁸	518	127		645
PE	44	21		65
NS	419	53		472
NL	288	30	33	351
Total	17,492	903	178	18,572

⁸ Data for ON and NB is from 2010

Collisions on the National Highway System – 2011

	<i>Core Routes</i>	<i>Feeder Routes</i>	<i>Northern & Remote</i>	<i>Total</i>
YT	145		52	197
NT	41		34	75
BC	5,460	492	29	5,981
AB	11,744	275	52	12,071
SK	2,513			2,513
MB	2,633	366	114	3,113
ON	21,693	625		22,318
QC	20,845	2,676	297	23,818
NB	1,188	611		1,799
PE	285	114		399
NS⁹	1,096	339		1,435
NL	598	31	77	706
Total	68,241	5,529	655	74,425

Collisions by Type

<i>Fatalities & Injuries</i>	<i>Property Damage Only</i>
77	120
31	44
2,595	3,386
1,944	10,127
541	1,972
495	2,618
4,433	17,885
4,179	19,639
449	1,350
142	257
426	1,009
146	560
15,458	58,967

Fatalities

	<i>Core Routes</i>	<i>Feeder Routes</i>	<i>Northern & Remote</i>	<i>Total</i>
YT	5		1	6
NT				
BC	112	15	1	128
AB	77	5		82
SK	38			38
MB	23	3	1	27
ON	96	8		104
QC	83	14	2	99
NB	10	14		24
PE	5	5		10
NS	14	5		19
NL	11			11
Total	474	69	5	548

Injuries

	<i>Core Routes</i>	<i>Feeder Routes</i>	<i>Northern & Remote</i>	<i>Total</i>
YT	82		22	104
NT	22		23	45
BC	3,371	343	11	3,725
AB	2,622	86	6	2,714
SK	751			751
MB	630	87	27	744
ON	6,286	254		6,540
QC	5,134	751	134	6,019
NB	348	226		574
PE	141	75		216
NS⁹	461			461
NL	165	1	20	186
Total	20,013	1,823	243	22,079

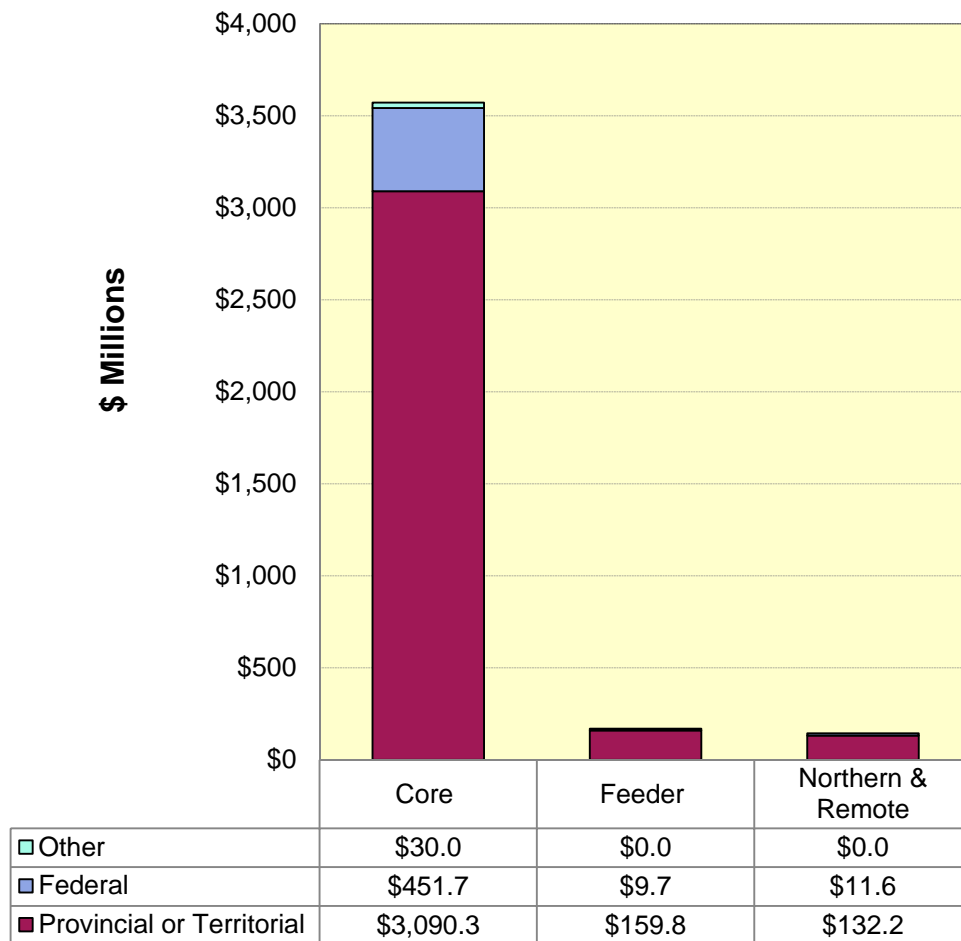
⁹ Collision and injury data for Nova Scotia is from 2006

Investment (Fiscal Year 2012/13)

Investment in the NHS by Jurisdiction – Fiscal Year 2012/13
(millions)

	<i>Federal</i>	<i>Provincial or Territorial</i>	<i>Other</i>	<i>Total</i>
YT	\$0.8	\$5.2	\$26.4	\$32.3
NT	\$17.8			\$17.8
BC	\$37.8	\$294.7	\$1.1	\$333.6
AB	\$86.9	\$370.2		\$457.1
SK	\$11.0	\$98.7		\$109.7
MB	\$38.0	\$73.3		\$111.3
ON	\$28.2	\$1,142.9		\$1,171.1
QC		\$840.0		\$840.0
NB	\$220.7	\$394.7		\$615.4
PE	\$3.8	\$22.6		\$26.4
NS	\$16.5	\$71.9	\$1.9	\$90.3
NL	\$11.6	\$68.2	\$0.6	\$80.4
Total	\$473.0	\$3,382.3	\$30.0	\$3,885.3

Investment in the National Highway System - Fiscal Year 2012/13

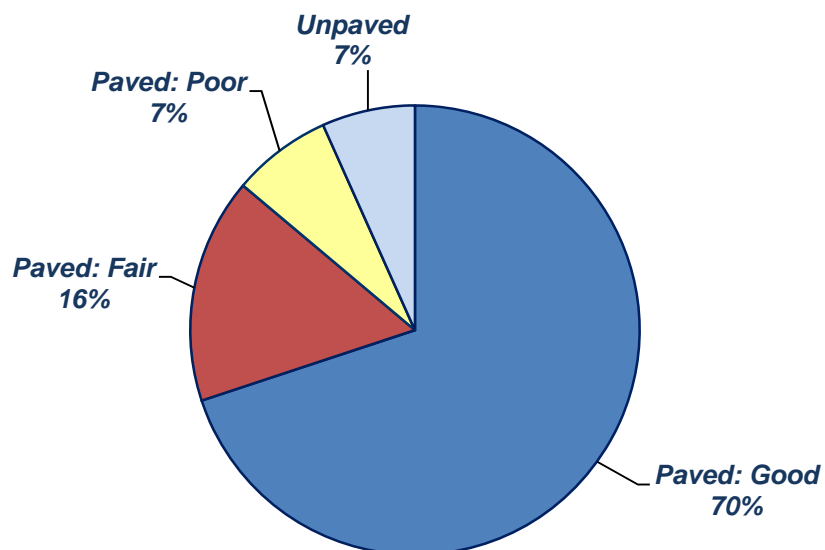


Pavement and Road Surface Condition (2012)

Surface Condition – All NHS Routes^{10,11}

	<i>Length (km)</i>	<i>Paved - Good</i>	<i>Paved - Fair</i>	<i>Paved - Poor</i>	<i>Unpaved</i>
YT	2,016	1,016	383	158	459
NT	1,423	457	135	115	705
BC	7,040	5,231	1,224	181	374
AB	4,448	3,122	1,295	274	
SK	2,678	2,506		121	
MB	2,092	1,569		389	
ON	6,836	5,024	1,442	371	
QC	5,652	3,053	851	879	237
NB	1,829	1,514	227	88	
PE	396	236	99	54	
NS	1,198	1,179	8		
NL	2,469	1,010	347	26	709
Total	38,078	25,917	6,011	2,656	2,484

National Highway System – Surface Condition 2012



¹⁰ Pavement condition rating information provided by jurisdictions is not based on identical criteria and thresholds;

- Transports Québec does not normally use the categories of “Good”, “Fair” and “Poor”. The thresholds used to differentiate “Good” from “Fair” are not used in Quebec, and the thresholds to differentiate “Fair” from “Poor” are based on thresholds for intervention, which vary from one class of road to another.
- Saskatchewan and Manitoba use only two pavement condition rating categories; “Good” and “Poor”.

¹¹ In some cases the cell totals for "good, fair, poor and unpaved" do not add up to the total length of NHS in each jurisdiction, primarily because pavement rating data was not available for some sections

National Highway System – Core Routes
Surface Condition – Km by Category (December 2012)

	<i>Length</i>	<i>Paved - Good</i>	<i>Paved - Fair</i>	<i>Paved -Poor</i>	<i>Unpaved</i>
YT	1,069	725	255	89	-
NT	576	424	94	50	-
BC	5,869	4,522	1,184	176	-
AB	4,036	2,843	1,163	272	-
SK	2,442	2,319		107	-
MB	982	768		131	-
ON	6,131	4,598	1,330	203	-
QC	3,452	2,269	596	494	-
NB	995	884	94	17	-
PE	208	115	54	32	-
NS	903	883	8		-
NL	1,008	775	219	14	-
Total	27,670	21,125	4,997	1,585	-

National Highway System – Feeder Routes
Surface Condition – Km by Category (December 2012)

	<i>Length</i>	<i>Paved - Good</i>	<i>Paved - Fair</i>	<i>Paved -Poor</i>	<i>Unpaved</i>
YT	-	-	-	-	-
NT	-	-	-	-	-
BC	447	402	38	5	-
AB	216	129	86	1	-
SK	-				-
MB	742	636		106	-
ON	706	426	112	168	-
QC	765	501	149	107	-
NB	834	630	133	71	-
PE	188	121	45	22	-
NS	296	296			-
NL	298	209	84	5	-
Total	4,490	3,350	647	485	-

National Highway System – Northern and Remote Routes
Surface Condition – Km by Category (December 2012)

	<i>Length</i>	<i>Paved - Good</i>	<i>Paved - Fair</i>	<i>Paved -Poor</i>	<i>Unpaved</i>
YT	948	292	129	69	459
NT	847	33	41	65	705
BC	724	307	2		374
AB	197	150	46	1	
SK	236	187		14	
MB	368	165		152	
ON	-				
QC	1,435	283	106	278	237
NB	-				
PE	-				
NS	-				
NL	1,163	26	44	7	709
Total	5,918	1,443	367	586	2,484

Bridges and Structures (2012)

Number of NHS Bridges and Structures¹² (December 2012)

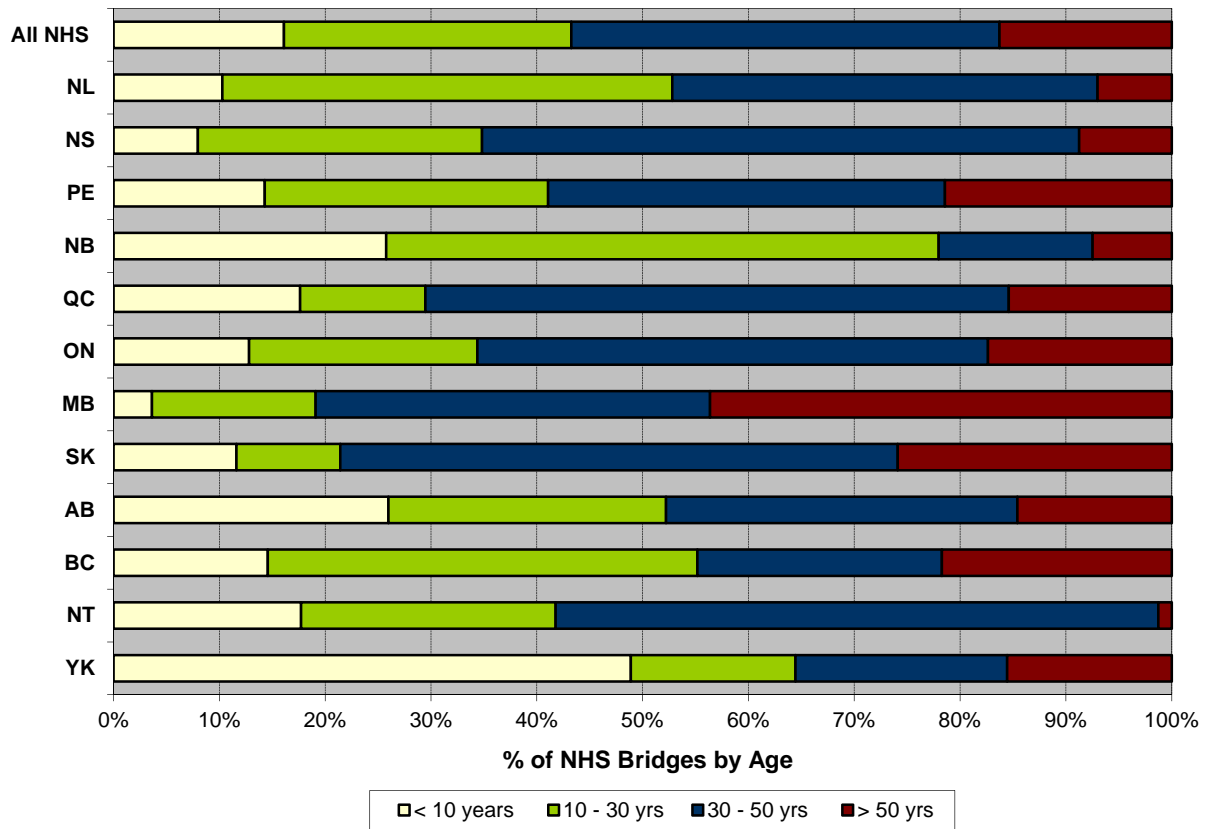
	<i>Number of Bridges</i>	<i>Core</i>	<i>Feeder</i>	<i>Northern & Remote</i>
YT	45	28		17
NT	85	17		62
BC	1,961	1,735	152	74
AB	747	724	13	10
SK	112	104		8
MB	110	87	18	5
ON	2,263	2,091	172	
QC	1,968	1,661	210	97
NB	722	537	185	
PE	56	31	25	
NS	652	540	112	
NL	214	168	13	33
Total	8,929	7,723	900	306

NHS Bridges and Structures – Number by Age

	<i>No. of Bridges</i>	<i>< 10 yrs</i>	<i>10 - 20 yrs</i>	<i>20 - 30 yrs</i>	<i>30 - 40 yrs</i>	<i>40 - 50 yrs</i>	<i>> 50 yrs</i>
YT	45	22	1	6	3	6	7
NT	85	14	7	12	37	8	1
BC	1,961	286	371	425	202	251	426
AB	747	194	114	82	121	127	109
SK	112	13	6	5	14	45	29
MB	110	4	8	9	15	26	48
ON	2,263	290	154	334	519	573	393
QC	1,968	347	129	104	418	667	303
NB	722	186	286	91	66	39	54
PE	56	8	6	9	11	10	12
NS	652	52	72	103	189	179	57
NL	214	22	56	35	14	72	15
Total	8,929	1,438	1,210	1,215	1,609	2,003	1,454

¹² Includes all bridges and structures with a span greater than 3.0 m (including large culverts)

NHS Bridges and Structures – Age Profile by Jurisdiction (as of December 2012)



Appendix 1 - National Highway System Route Inventory

(As of December 31, 2012)

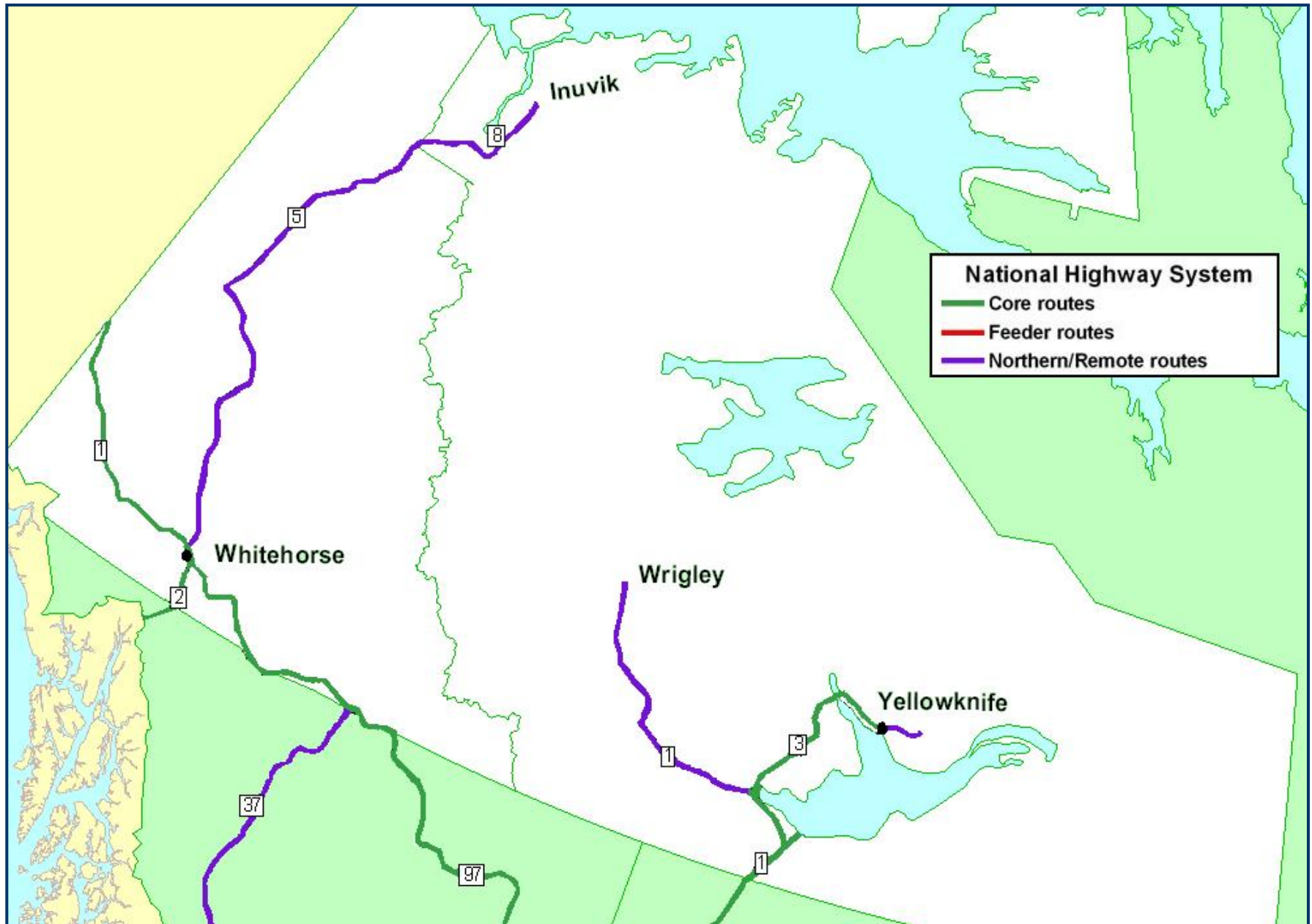
Jurisdiction	Core Network (km)	Feeder Network (km)	Northern & Remote Network (km)	Total – National Highway System (km)	Length Change: 2012 vs 2011
Yukon	1,068.6		947.9	2,016.5	+ 0.2
Northwest Territories	575.6		847.2	1,422.8	
Nunavut				-	
British Columbia	5,869.3	446.7	724.0	7,040.0	
Alberta	4,036.2	215.5	196.5	4,448.3	
Saskatchewan	2,442.0		236.3	2,678.3	+ 1.8
Manitoba	982.3	741.9	368.2	2,092.4	
Ontario	6,130.7	705.6		6,836.3	
Québec	3,452.0	765.4	1,435.0	5,652.4	- 6.7
New Brunswick	994.7	833.8		1,828.5	
Prince Edward Island	208.2	188.0		396.2	
Nova Scotia	902.6	295.5		1,198.1	- 0.4
Newfoundland and Labrador	1,007.6	298.0	1,163.0	2,468.6	
	27,669.8	4,490.5	5,918.1	38,078.5	- 5.1

Route Description and Segment Length Changes: December 31, 2011 to December 31, 2012

Adjustments to system description and route inventory:

Yukon - Minor change in section length due to re-measurement (increase of 0.2 km)
Northwest Territories - No changes
British Columbia – No changes
Alberta – No changes
Saskatchewan - Minor changes in section lengths due to re-measurement (net increase of 0.2 km)
Manitoba - No changes
Ontario - No changes
Quebec - Minor changes in section lengths due to new construction (net decrease of 6.7 km)
New Brunswick - No changes
Prince Edward Island - No changes
Nova Scotia - Minor change in section length due to re-measurement (decrease of 0.4 km)
Newfoundland and Labrador - No changes
Federal Roads - No changes

National Highway System – Yukon and Northwest Territories



Yukon				Core	Feeder	Northern and Remote
Route	From	To	Length (km)	km	km	km
1	BC Border-km 967 (Crossing #7)	Alaska Border	934.9	934.9		
2	Whitehorse	Alaska Border	133.7	133.7		
Klondike Highway	Hwy 1	Jct. Dempster Hwy	482.9			482.9
Dempster Highway	Klondike Highway	NWT border	465.0			465.0
Total			2,016.5	1,068.6	-	947.9

Northwest Territories				Core	Feeder	Northern and Remote
Route	From	To	Length (km)	km	km	km
1	Alberta border	Highway 3	187.0	187.0		
2	Enterprise	Hay River	48.6	48.6		
2	Highway 1	Yellowknife	340.0	340.0		
8	Yukon Border	Inuvik	272.5			272.5
1	Highway 3	Wrigley	505.5			505.5
4	Yellowknife (Hwy 3)	km 69.2	69.2			69.2
Total			1,422.8	575.6	-	847.2

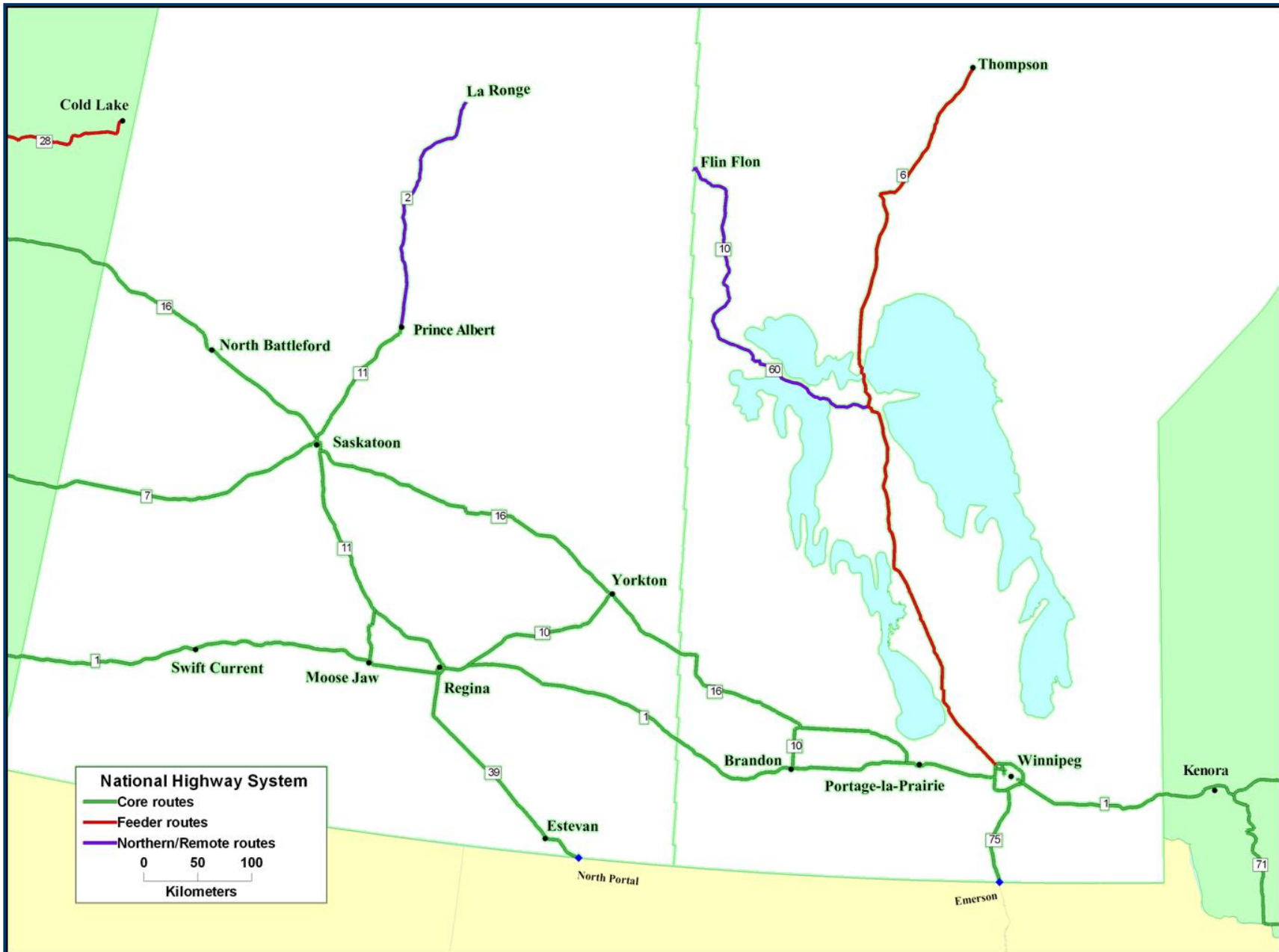
National Highway System – British Columbia and Alberta



British Columbia				Core	Feeder	Northern and Remote
Route	From	To	Length (km)	km	km	km
1	Alberta border	Victoria (via Departure Bay)	993.0	993.0		
2	Alberta border	Dawson Creek	42.0	42.0		
3	Alberta border	Hope (Jct. 5)	833.0	833.0		
5	Tete Jaune Cache	Hope (Jct. 1)	531.0	531.0		
16	Alberta border	Prince Rupert	1,074.0	1,074.0		
17	Victoria	Hwy 99	44.0	44.0		
97	Cache Creek	Yukon Border-km 967 (Crossing #7)	1,812.0	1,812.0		
99	U.S. Border (Peace Arch)	Jct 1/99 (N. Vancouver)	59.0	59.0		
8th Ave./15	U.S. Border (Pacific Highway)	Highway 99	3.0	3.0		
11	Abbotsford	U.S. Border (Huntingdon)	3.0	3.0		
19	Nanaimo	Parksville (Jct. 4A)	41.0	41.0		
97	Hwy 97C (Peachland)	Jct 97A/97B (Fork)	80.0	80.0		
97A	Jct 97A/97B (Fork)	Sicamous (Jct 1)	66.0	66.0		
97B	Jct 97A/97B (Fork)	Salmon Arm (Jct 1)	14.0	14.0		
97C	Merritt (Jct 5)	Jct 97 (near Peachland)	106.0	106.0		
99	Jct 1/99 (Horseshoe Bay)	Whistler (Lorimer Rd.)	103.0	103.0		
McGill	Hwy 1	Port of Vancouver - Vanterm and Centerm	4.0	4.0		
Deltaport Way	Hwy 99	Port of Vancouver - Deltaport	10.0	10.0		
River Road and Elevator Road	Hwy 17/99	Fraser River Port	15.0	15.0		
Fairview Terminals Rd	Hwy 16	Port of Prince Rupert	2.0	2.0		
Highway 19 - link to Duke Pt Ferry Terminal	Hwy 1	Duke Pt. Ferry Terminal - Duke Pt.	7.6	7.6		
Bridgeport Rd/Sea Island Way	Jct Hwy 99/Bridgeport Road	Vancouver International Airport	1.7	1.7		
McTavish/Canora/Willingdon Rds	Jct Hwy 17/McTavish Rd.	Victoria International Airport	0.8	0.8		
Airport Way	Hwy 97	Kelowna Airport	0.3	0.3		
Mt. Lehman Road	Hwy 1	Abbotsford Airport, Jct. Mt. Lehman/Approach Dr.	2.9	2.9		
Old Cariboo Hwy	Hwy 16	Prince George Airport, Jct. Johnson/Ellis Rds.	5.0	5.0		
176th St. & 104th Ave.	Jct Hwy 1/176th street	CN Vancouver Intermodal Terminal (VIT)	2.0	2.0		
Highways 7B/ 7/Kennedy Road	Jct Hwy 1/7B	CP Vancouver Intermodal Facility (VIF)	14.0	14.0		
4	Highway 19	Port Alberni (River Rd.)	38.0		38.0	
101	Vancouver (Langdale ferry terminal)	Powell River (Duncan St.)	112.2		112.2	
97	Highway 97C	Penticton (Railway St.)	44.1		44.1	
97	Penticton (Railway St.)	U.S. Border (Osoyoos)	65.0		65	
95	Highway 3	U.S. Border (Kingsgate)	11.3		11.3	
19	Parksville, Jct 4A/19	Campbell River, Jct Hwy 19/28	118.4		118.4	
37	Highway 16 (Terrace)	Kitimat (Nalabila Blvd.)	57.7		57.7	
37	Highway 16	Highway 97	724.0			724.0
Total			7,040.0	5,869.3	446.7	724.0

Alberta				Core	Feeder	Northern and Remote
Route	From	To	Length (km)	km	km	km
1	Sask. Border	B.C. Border	534.7	534.7		
2	Fort Macleod	Edmonton (Jct. 216)	447.8	447.8		
	Donnelly	N. of Grimshaw	82.4	82.4		
3	Medicine Hat	B.C. Border	324.1	324.1		
4	U.S. border (Coutts)	Lethbridge	103.4	103.4		
9	Calgary	Sask. Border	324.8	324.8		
16	Sask. Border	B.C. Border	641.1	641.1		
35	N. of Grimshaw	N.W.T. Border	465.4	465.4		
43	Edmonton	B.C. Border	498.9	498.9		
49	Valleyview	Donnelly	76.6	76.6		
15/28A/28/63	Jct. Hwy 16	Fort McMurray (Athabasca River)	431.3	431.3		
96th Ave/Barlow Trail	Deerfoot Trail (Hwy 2)	Calgary International Airport	2.9	2.9		
69	Junction Hwy 63	Fort McMurray Airport	6.0	6.0		
Barlow Trail/114th Ave SE/52nd St SE/Dufferrin Place	Deerfoot Trail (Hwy 2)	CP Intermodal Terminal	3.4	3.4		
Barlow Trail/54th Ave SE/27th St SE	Deerfoot Trail (Hwy 2)	CN Intermodal Terminal	1.9	1.9		
184th Street	Yellowhead Trail (Hwy 16)	CN Intermodal Terminal	0.9	0.9		
201	Junction of Hwy 1 W. of Calgary	Junction of Hwy 1 E. of Calgary	42.4	42.4		
216	Junction of Hwy 16 W. of Edmonton	Junction of Hwy 16 E. of Edmonton	48.3	48.3		
28	Junction Hwy 63	Cold Lake (10 St.)	215.5		215.5	
58	Rainbow Lake (Rainbow Dr.)	Highway 35 (High Level)	139.6			139.6
58	Highway 35 (High Level)	Highway 88	56.9			56.9
Total			4,448.3	4,036.2	215.5	196.5

National Highway System – Saskatchewan and Manitoba



Saskatchewan				Core	Feeder	Northern and Remote
Route	From	To	Length (km)	km	km	km
01	Manitoba border	Regina (Jct. Hwy 6)	245.3	245.3		
01	Regina (Jct. Hwy 6)	Alta. Border	405.2	405.2		
16	Manitoba border	Saskatoon (Jct. Circle Dr.)	418.9	418.9		
16	Saskatoon (Jct. Circle Dr.)	Alta. Border	272.1	272.1		
07	Saskatoon (Jct. Circle Dr.)	Alta. Border	254.6	254.5		
11	Regina	Saskatoon	253.3	253.3		
6/39	Regina	U.S. Border (North Portal)	233.7	233.7		
2/11	Saskatoon	Prince Albert (15 th St)	137.4	137.4		
02	Moose Jaw	Hwy 11	51.4	51.4		
10	Hwy 1	Yorkton	160.5	160.5		
Lewvan Drive & Regina Ave	Hwy 1	Regina Airport (Empress Rd.)	4.9	4.9		
Airport Drive	Circle Drive	Saskatoon Airport	1.7	1.7		
11th Street and Chappel Drive	Highway 7	Saskatoon Chappel Yard – CN Rail terminal	3.0	3.0		
02	Prince Albert (15th St.)	La Ronge (Brown St.)	236.3			236.3
Total			2,678.3	2,442.0	-	236.3

Manitoba				Core	Feeder	Northern and Remote
Route	From	To	Length (km)	km	km	km
1	Ontario Border	Sask. Border	500.1	500.1		
16	Portage-la-Prairie	Sask. Border	267.2	267.2		
75	Winnipeg	U.S. border (Emerson)	93.6	93.6		
10	Brandon (PTH 1)	Highway 16 SE	41.5	41.5		
Wpg Route 90, Sargent/Wellington	PTH 101	James H Richardson Airport	13.3	13.3		
PR 221/ Inkster Blvd. /Keewatin St.	PTH 101	CPR Weston	11.0	11.0		
PTH 1 East/Plessis Rd	PTH 100	560 Plessis Rd./Symington Yard	6.0	6.0		
Hwy 101 (North Perimeter Rd)	East Jct Hwy 1	West Jct Hwy 1	49.6	49.6		
PTH 6	Highway 100	Thompson (Thompson Dr. N)	741.9		741.9	
PTH 60/10	Highway 6	Flin Flon (4 th Ave.)	368.2			368.2
Total			2,092.4	982.3	741.9	368.2

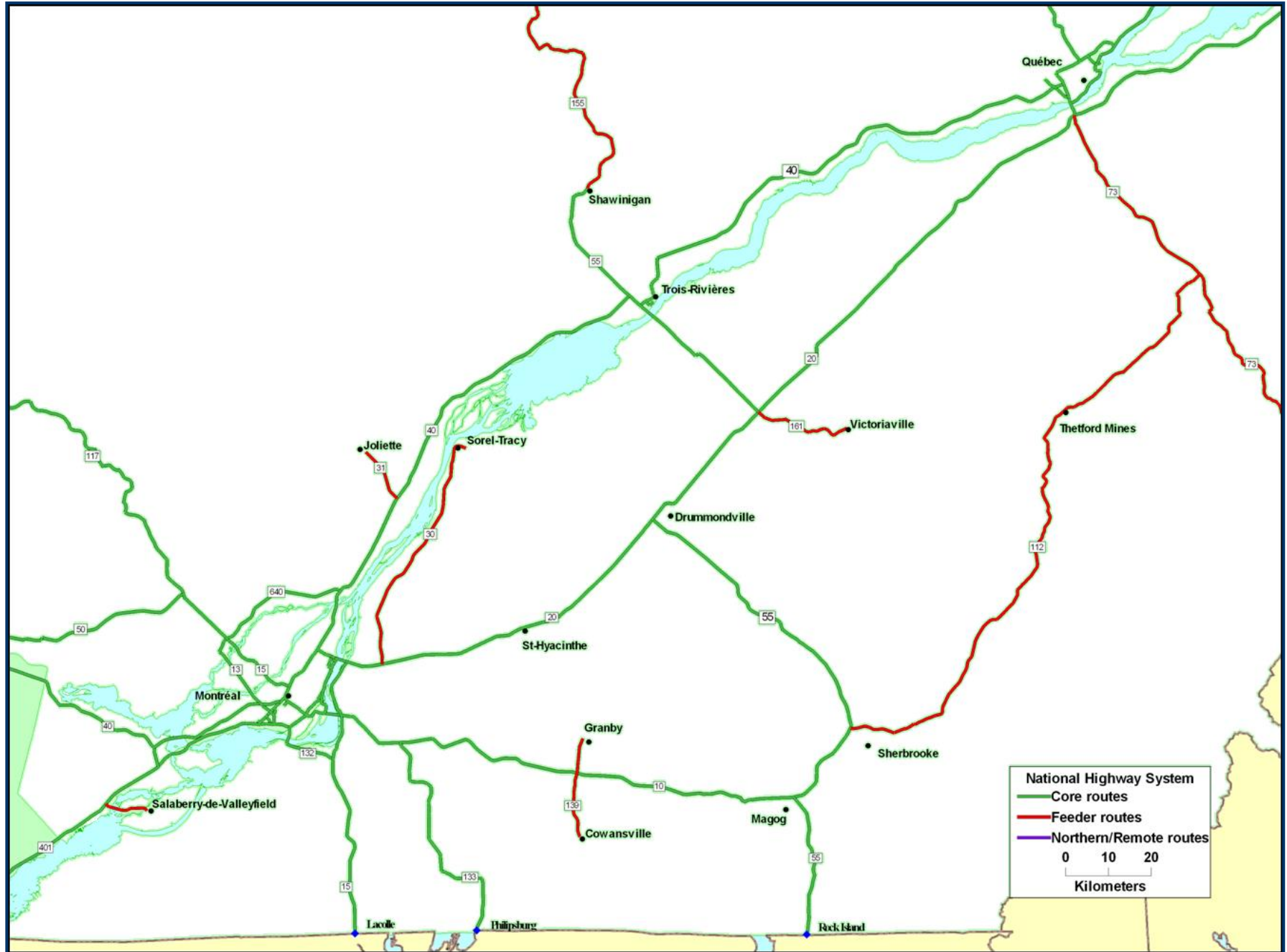
National Highway System – Ontario



Ontario				Core	Feeder	Northern and Remote
Route	From	To	Length (km)	km	km	km
QEW	Fort Erie	Toronto	139.0	139.0		
401	Que. Border	Windsor	817.0	817.0		
402	London	U.S. Border (Sarnia)	103.0	103.0		
405	QEW	U.S. Border (Queenston-Lewiston Bridge)	9.0	9.0		
427	Hwy 401	QEW	8.0	8.0		
137	Highway 401	U.S. Border (Lansdowne)	4.0	4.0		
416	Ottawa (Jct. 417)	Hwy 401	76.0	76.0		
16	Hwy 401	U.S. Border (Prescott)	3.8	3.8		
417	Quebec Border	Reg. Rd 29 (Arnprior)	182.8	182.8		
400	Toronto (Jct. Hwy 401)	Parry Sound (IC-217)	210.4	210.4		
69	Parry Sound (IC-217)	Sudbury (Jct. Southwest Bypass)	181.5	181.5		
17	Reg. Rd 29 (Arnprior)	Manitoba Border	1,966.3	1,966.3		
66	Quebec Border	Kirkland Lake	58.4	58.4		
11	North Bay	Nipigon	991.5	991.5		
71	U.S. Border (Fort Frances)	Hwy 17	194.3	194.3		
61	U.S. Border (Pigeon River)	Thunder Bay (Jct. 17)	58.0	58.0		
403	QEW (Burlington)	Hwy 401 (Woodstock)	81.9	81.9		
11/400A	Barrie	North Bay	239.7	239.7		
35/115	Hwy 401	Peterborough (S Jct. Hwy 7/115)	44.8	44.8		
7/115	Peterborough (S Jct. Hwy 7/115)	Ottawa (Jct. Hwy 417)	319.0	319.0		
7/12	Peterborough (S Jct. Hwy 7/115)	Hwy 11	74.0	74.0		
12	N Jct. Hwy 11	Hwy 400	-	-		
26	Hwy 400 (Barrie)	Collingwood (County Road 19)	63.0	63.0		
06	Hwy 403 (Hamilton)	Highway 401 (Guelph)	25.9	25.9		
06	Highway 401 (Guelph)	Guelph (Woodlawn Rd.)	15.4	15.4		
07	Guelph (Woodlawn Rd.)	Kitchener (Conestoga Parkway)	20.8	20.8		
08	Kitchener (Conestoga Parkway)	Stratford (Erie)	52.5	52.5		
08	Hwy 401	Kitchener (Conestoga Parkway)	-	-		
108	Hwy 17	Elliot Lake (Hillside Dr.)	27.2	27.2		
34	Hwy 417	Hawkesbury (Quebec Border)	19.2	19.2		
17B	Hwy 17	U.S. Border (Sault Ste. Marie)	10.6	10.6		
03	Hwy 401	U.S. Border (Ambassador Bridge)	10.9	10.9		
3B	Hwy 401	U.S. Border (Detroit-Windsor Tunnel)	11.0	11.0		
420	QEW	U.S. Border (Rainbow Bridge)	4.7	4.7		
Nicholas/Rideau/King Edward	Hwy 417	Quebec Border (Gatineau)	4.0	4.0		
403	QEW	Hwy 401	20.9	20.9		
410	Hwy 401	Steeles Ave.	6.7	6.7		
427	Hwy 401	York Regional Road 7	12.1	12.1		
409	Hwy 401	Hwy 427	4.1	4.1		
6	Hwy 403	Hamilton Airport (Airport Rd.)	9.7	9.7		
Bronson/Airport Parkway	Hwy 417	Ottawa Airport	9.8	9.8		
Airport Rd./Oxford St. E	Hwy 401	London Airport	10.0	10.0		
RR7/RR50/Rutherford	Hwy 427	CP Intermodal Terminal (Vaughan)	6.0	6.0		

Ontario (continued)				Core	Feeder	Northern and Remote
Route	From	To	Length (km)	km	km	km
Steeles/Airport Rd/Intermodal Dr.	Hwy 410 (Bovaird Dr.)	CN Intermodal Terminal (Brampton)	7.1	7.1		
Derry Rd/Airport Rd/Intermodal Dr.	Hwy 427	Steeles Ave. - CN Intermodal Terminal (Brampton)	5.6	5.6		
Gardiner Expy/Kipling/Queen	Hwy 427	CP Obico Intermodal Terminal	3.5	3.5		
Trafalgar	Hwy 401	Derry Rd. - CP Expressway Intermodal Terminal	1.7	1.7		
RR7/Keele/Administration	Hwy 400	CN RoadRailer Intermodal Terminal (Vaughan)	4.3	4.3		
McCowan Road	Hwy 401	CP Expressway Intermodal Terminal (Scarborough)	1.6	1.6		
138	Hwy 401	Hwy 417	35.4		35.4	
138	U.S. Border (Cornwall)	Hwy 401 IC	7.7		7.7	
CR17	Hawkesbury E	Hwy 417	10.0		10.0	
144/101	Hwy 17 (Sudbury)	Timmins (Mountjoy St.)	271.7		271.7	
101	Timmins (Mountjoy St.)	Highway 11	90.7		90.7	
12	Hwy 400	Midland (Highway 93)	18.0		18.0	
10	Hwy 410 (Steeles Ave.)	Owen Sound (Highway 26)	152.1		152.1	
77	Hwy 401	Leamington (Highway 3)	22.6		22.6	
03	Leamington (Hwy 77)	Hwy 401	38.7		38.7	
19	Hwy 401	Tillsonburg (Vienna Rd.)	22.5		22.5	
24	Hwy 403	Simcoe (Hwy 3/Queensway Dr.)	36.2		36.2	
Total			6,836.3	6,130.7	705.6	-

National Highway System – Southern Québec



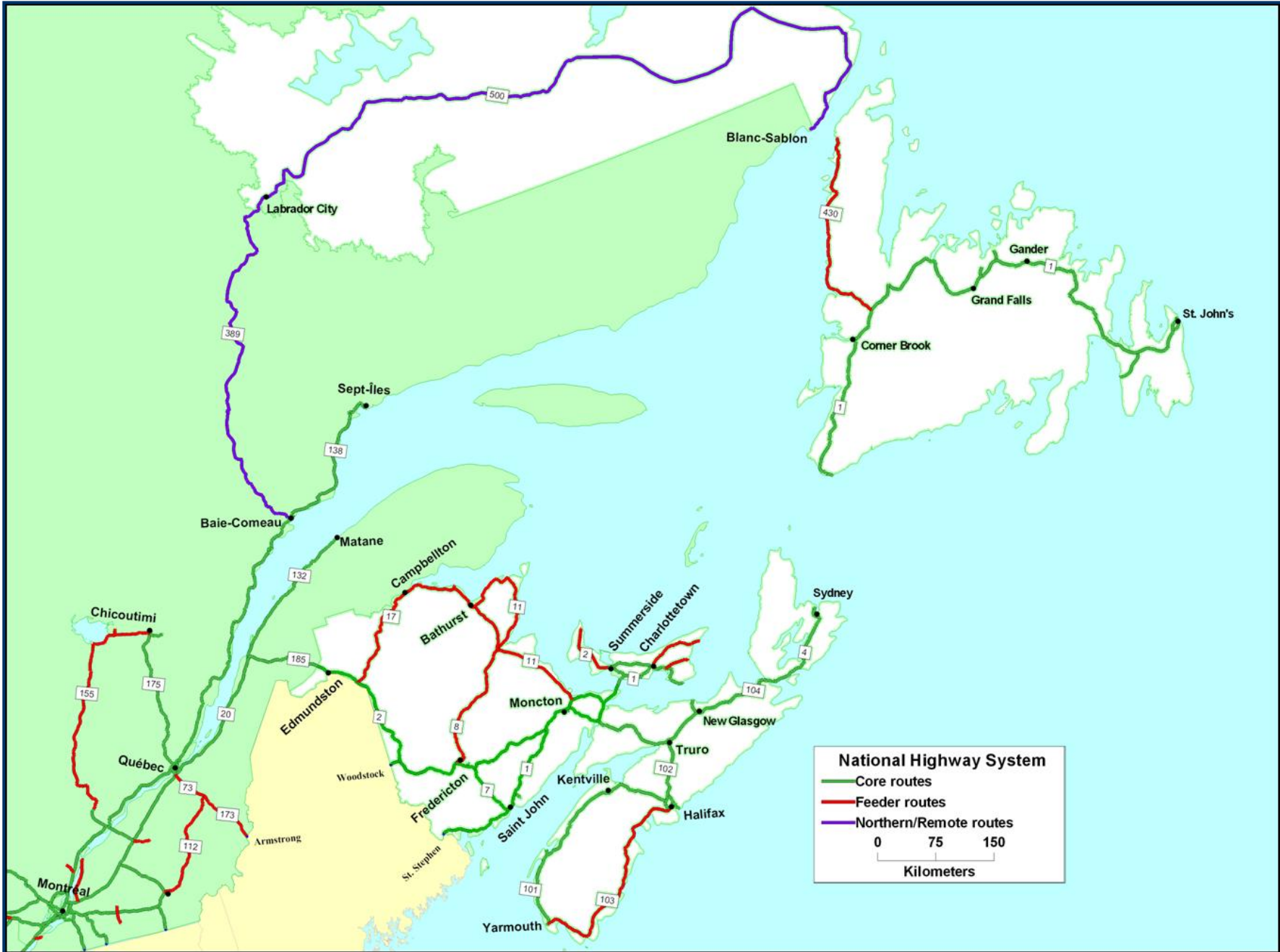
Québec				Core	Feeder	Northern and Remote
Route	From	To	Length (km)	km	km	km
A10	A10, Rive sud de Montréal, est du pont Champlain	A10, jonction avec A55 à Sherbrooke	137.0	137.0		
A15	A15, frontière entre le Québec et New-York à St-Bernard-de-Lacolle jct I87	A15, Rive sud de Montréal, est du pont Champlain	53.8	53.8		
A15,117,101	A15, Île de Montréal, intersection avec la A20 et A720	A15, Intersection avec A40, échangeur Décarie	7.0	7.0		
	A15, Intersection A40, Échangeur de l'Acadie	A15, intersection avec 117	88.7	88.7		
	117, Fin A15, Ste-Agathe-des-Monts	117, Début tracé conjoint 101-117 à Rouyn-Noranda	533.4	533.4		
	101, Tracé conjoint 101-117 de Rouyn-Noranda à Artnfield	101, Fin tracé conjoint	19.0	19.0		
	117, Artnfield, intersection 117 et 101	117, Frontière de l'Ontario jct route 66	19.4	19.4		
A20	A20, Frontière de l'Ontario avec la route 401 à Rivière-Beaudette	A20, Île de Montréal, Échangeur avec A15 et A720	67.6	67.6		
	A15 Échangeur A20-A15-A720	A15, Ouest du pont Champlain	2.1	2.1		
	A15, approches ouest du pont Champlain	A15, début pont Champlain	2.6	2.6		
	A10, Pont Champlain	A10, approches est du pont Champlain	4.0	4.0		
	A10, approches est du pont Champlain	A10, Échangeur A10-A15-A20	1.0	1.0		
	A20, Rive sud de Montréal, Brossard	A20 à Rivière-du-Loup, intersection avec 185	423.0	423.0		
A85,185	Intersection avec la A20 à Rivière-du-Loup	Continuité sur 185	12.8	12.8		
	185,Jct avec A85	185, Frontière du Nouveau-Brunswick jct route 2	88.2	88.2		
A25	A25, intersection avec A20 à Longueuil	A25, intersection avec A40 à Anjou	8.1	8.1		
A35, 133	133, frontière du Vermont à Philipsburg jct I89	133, jonction avec A35 à St-Athanase	42.1	42.1		
	A35, jonction avec 133 à St-Athanase	A35, intersection avec A10 à Carignan	18.7	18.7		
A40	A40, frontière de l'Ontario à Pointe-Fortune	A40, intersection A55 à Trois-Rivières-Ouest	197.0	197.0		
	A55, tracé conjoint avec A40 à Trois-Rivières-Ouest	A55, fin tracé conjoint avec A40	3.5	3.5		
	A40, échangeur avec A55	A40, échangeur avec autoroute Dufferin l'ouest du pont de l'Île d'Orléan	141.6	141.6		
138	A40, échangeur autoroute Dufferin	A40, jonction avec 138 à l'est du pont de l'Île d'Orléan	2.2	2.2		
	138, jonction avec A40 à l'est du pont de l'Île d'Orléans	138, intersection avec la Rue Smith à Sept-Îles	627.2	627.2		
A73, 175	A73, échangeur avec A20 à Charny	A73, échangeur avec A40 à Ste-Foy	7.8	7.8		
	A73, fin tracé conjoint avec A40 à Québec	A73, jonction avec 175 à Stoneham-et-Tewkesbury	18.6	18.6		
	175, jonction A73 à Stoneham	175, échangeur avec A70 à Chicoutimi	178.9	178.9		
	175, échangeur avec A70 à Chicoutimi	175, intersection blv de L'Université Est	3.6	3.6		
A55	A55, frontière avec le Vermont à Stanstead	A55, échangeur avec A10, début tracé conjoint avec A10	34.5	34.5		
	A55, fin tracé conjoint avec A10	A55, échangeur avec A20, début tracé conjoint avec A20	71.2	71.2		

Québec (continued)				Core	Feeder	Northern and Remote
Route	From	To	Length (km)	km	km	km
	A55, échangeur avec A20	A55, échangeur avec A40, début tracé conjoint avec A40	37.3	37.3		
A50	A50, échangeur A5 à Gatineau	A50, échangeur avec A15 à Mirabel	155.9	155.9		
A55	A55, échangeur avec A40 à Trois-Rivières-Ouest	A55, échangeur avec 8e rue à Grand-Mère (fin des chaussées séparées)	40.4	40.4		
A20,132	A20, échangeur avec 185 à Rivière-du-Loup	A20, jonction avec 132 à L'Isle-Verte	28.5	28.5		
	132, jonction avec A20 à L'Isle-Verte	132, jonction avec A20 à Le Bic	69.0	69.0		
	A20, jonction avec 132 à Le Bic	A20, intersection avec 132 à Mont-Joli	45.2	45.2		
	93861, jonction avec A20 à L'Isle -Verte	93861, jonction avec A20 à L'Isle -Verte	0.7	0.7		
	132, intersection avec A-20 à Mont-Joli	132, intersection avec 195 à Matane	62.5	62.5		
344	344, frontière de l'Ontario jct route 34	344, jonction de la 148 à Grenville	4.7	4.7		
A540	A540, échangeur avec A20 à Vaudreuil-Dorion	A540, échangeur avec A40 à Vaudreuil-Dorion	4.9	4.9		
A5	A5, Pont Mc-Donal-Cartier à Gatineau, jct ave King Edward en Ontario	A5, jonction avec A50 à Hull	1.8	1.8		
A640	A640, échangeur avec A40 à Terrebonne	A640, échangeur avec A13 à Boisbriand	34.9	34.9		
A13	A13, de l'échangeur avec la A40 à Montréal	A13, à l'échangeur avec la A640 à Boisbriand	15.0	15.0		
138	138, intersection avec la Rue Smith à Sept-Îles	138, intersection avec la Rue Retty à Sept-Îles	2.3	2.3		
	Port de Sept-Îles, rue Retty, intersection 138	rue Retty, Port de sept-Îles	1.4	1.4		
A13	A13, de l'échangeur avec A20 à Montréal	A13, à l'échangeur avec la A40 à Montréal	6.0	6.0		
A720	A720, Autoroute Ville-Marie, échangeur avec A15 et A20 à Montréal	A720, jonction avec boul. Notre-Dame à Montréal	8.1	8.1		
A10	A10, Autoroute Bonaventure, échangeur avec A15 à Montréal	A10, échangeur avec A720 à Montréal	4.5	4.5		
	Port de Montréal, accès ouest, rues Mill		0.7	0.7		
	rue de la Commune		1.8	1.8		
	rue Berri		0.1	0.1		
	rue Notre-Dame		7.9	7.9		
	boul. René-Lévesque		0.3	0.3		
	rue Viger		0.0	0.0		
	aut. Ville-Marie		1.6	1.6		
	rue de Lorimier		0.4	0.4		
	Port de Montréal accès est, rue Souigny		2.2	2.2		
	rues Des Futailles		0.9	0.9		
	rue Tellier		0.6	0.6		
	rue Dickson		1.1	1.1		
	rue De Boucherville		3.2	3.2		
	rue Curatteau		0.1	0.1		
	rue Souigny		0.2	0.2		

Québec (continued)				Core	Feeder	Northern and Remote
Route	From	To	Length (km)	km	km	km
	Accès au terminal intermodal du CN, rues Hickmore		1.6	1.6		
	rue Mc-Arthur		1.4	1.4		
	Accès au terminal intermodal du CFCP, rues Joseph Dubreuil	43e avenue, échangeur avec A520	0.3	0.3		
	46e Avenue		1.6	1.6		
	43e Avenue		0.6	0.6		
	Accès au service Expressway du CFCP, rue Paré, échangeur avec A15		1.4	1.4		
A520	A520, échangeur avec A20 à Montréal	A520, échangeur avec A40 à Montréal	7.4	7.4		
	A520, échangeur avec A40 à Montréal		0.4	0.4		
	Aéroport de Dorval-Trudeau, rue Roméo Vachon jonction avec bretelles de A520	rue Roméo-Vachon, aéroport de Dorval	0.6	0.6		
	rue Michel-Jasmin		0.3	0.3		
	Aéroport de Mirabel, rue locales	boul. Henri Fabre	2.4	2.4		
A40	Port de Trois-Rivières, boul. des Récollets, intersection avec boul. Royal	boul. des Récollets, intersection avec A40	1.5	1.5		
	boul. GENE-H.-KRUGER	boul.GENE-H.-KRUGER, intersection avec boul de Récollets	1.3	1.3		
	rue Normand		0.2	0.2		
	boul. Notre-Dame	intersection avec rue Lavérendrye	1.0	1.0		
A70, 170	A70,Port de Port-Saguenay, intersection avec 175 à Saguenay	170, Port-Saguenay	18.4	18.4		
A440	A440, jonction avec le boul. Dufferin à Québec	A440, jonction avec boul. Henri Bourassa	2.2	2.2		
	A440, jonction avec boul. Henri Bourassa	A440, jonction avec A40 à Beauport	6.5	6.5		
	Port de Québec Rive-nord, boul. Henri-Bourassa, échangeur avec A40		3.1	3.1		
	boul. Henri-Bourassa		0.9	0.9		
	boul. Henri-Bourassa		0.5	0.5		
136	Port de Québec, Vieux Québec, 136 boul. Champlain, intersection avec A73	136, changement de juridiction	8.7	8.7		
	Port de Québec Vieux Québec, 136 changement de juridiction	136, intersection avec 42330 ru du Marché-Champlain	3.0	3.0		
	Port de Québec Vieux Québec, 42330, intersection avec 136	42330, intersection avec A440	2.1	2.1		
A540	A540, Autoroute Duplessis, échangeur A73 à Québec	A540, échangeur A40 à Québec	3.5	3.5		
A540	Aéroport Jean-Lesage , A540, intersection avec A40	A540, jonction avec boul de l'Aéroport	1.4	1.4		
	Aéroport Jean-Lesage, boul. de l'Aéroport, jonction avec A540	boul. de l'Aéroport, intersection avec l'avenue Principale	1.6	1.6		
49454	Port de Baie-Comeau , route Maritime, intersection avec 138	route Maritime, intersection avec rue du Quai	3.8	3.8		

Québec (continued)				Core	Feeder	Northern and Remote
Route	From	To	Length (km)	km	km	km
132,138	132, échangeur avec A15 à Candiac	132, Échangeur avec 138 au pont Honoré-Mercier	11.0	11.0		
	138, échangeur avec 132 au pont Honoré-Mercier	138, échangeur avec A20 à Montréal	4.9	4.9		
A55,155	A55, intersection avec 8e rue à Grand-Mère	A55, fin de l'autoroute	2.0		2.0	
	155, jonction A55 à Grand-Mère	155, intersection avec 169 à Chambord	248.8		248.8	
169,170	169, intersection avec 155 à Chambord	169, jonction avec 170 à Métabetchouan-Lac-à-la-Croix	20.1		20.1	
	170, jonction avec 169 à Métabetchouan-Lac-à-la-Croix	170, intersection avec 169 à St-Bruno	14.7		14.7	
	169, intersection 170 à St-Bruno (est)	169, intersection boul. Auger à Alma	8.9		8.9	
A70,170	170, intersection avec 169 à St-Bruno (ouest)	170, jonction avec A70 à Saguenay	25.1		25.1	
	A70, jonction avec 170 à l'ouest de Saguenay	A70, intersection 175 à Saguenay	22.5		22.5	
201	201, échangeur avec A20 à Coteau du lac	201, jonction avec 132 à Salaberry-de-Valleyfield	9.2		9.2	
	132, jonction avec 201 à Salaberry-de-Valleyfield	132, intersection avec A530	1.2		1.2	
A610,112	A610, jonction avec A10-A55 à Sherbrooke	A610, jonction avec 112 à Fleurimont	10.9		10.9	
	112, de jonction avec A10 à Fleurimont	112, jonction avec A73 à Vallée-Jonction	144.2		144.2	
A73,173	173, intersection avec 271 à St-Georges-de-Beauce	173, intersection avec chemin Calway	19.9		19.9	
	87590(chemin Calway), intersection avec 173	intersection avec A73	2.6		2.6	
	A73, intersection avec chemin Calway	A73,intersection avec A20 à Lévis	69.0		69.0	
A30	A30, échangeur A20 à Longueuil	A30, intersection avec 133 (boul.Gagné) à Sorel	58.1		58.1	
A31	A31, échangeur avec A40 à Lavaltrie	A31, échangeur avec 158 à Joliette	13.7		13.7	
139	139, échangeur avec A10 à St-Alphonse	139, municipalité de Cowansville	15.4		15.4	
139	139, échangeur avec A10 à St-Alphonse	139, municipalité de Granby	8.2		8.2	
161	161, échangeur avec A20 à Sainte-Eulalie	161, intersection avec 122 à Victoriaville	20.4		20.4	
	79229 (rue des Bouleaux), intersection avec A-20	79372 (rang des Cèdres)	0.6		0.6	
	122, intersection avec 161 à Victoriaville	122, intersection rue Bois-Franc à Victoriaville	3.5		3.5	
173	173, de la frontière avec le Maine à St-Théophile	173, intersection avec 271 à St-Georges-de-Beauce	46.5		46.5	
109,111	111, Intersection avec 117 à Val-D'Or	111, intersection avec 109 à Amos	65.7			65.7
	109, intersection avec 111 à Amos	109, Matagami	183.3			183.3
	109, Matagami	109, Radisson (Aménagement Robert Bourrassa)	620.3			620.3
389	389, intersection avec 138 à Baie-Comeau	389, frontière avec le Labrador à Fermont	565.6			565.6
Total			5,652.4	3,452.0	765.4	1,435.0

National Highway System – Atlantic Provinces



New Brunswick				Core	Feeder	Northern and Remote
Route	From	To	Length (km)	km	km	km
2	Quebec Border	Nova Scotia Border	515.0	515.0		
1	Petitcodiac	U.S. Border (St. Stephen)	240.7	240.7		
7	Hwy 1 (Saint John)	Hwy 2 (Fredericton)	76.4	76.4		
16	Hwy 2	Mid-point Confederation Bridge	57.8	57.8		
15	Moncton	Port Elgin	59.5	59.5		
95	Hwy 2	U.S. Border (Woodstock)	14.4	14.4		
Municipal streets	Hwy 1	Port of Saint John - East side	7.1	7.1		
Municipal streets	Hwy 1	Digby Ferry/Port of Saint John - West side	2.2	2.2		
111	Hwy 1	Saint John Airport	9.6	9.6		
Nevers Road/Route 102	Hwy 2	Fredericton Airport	5.8	5.8		
Route 15/ Harrisville/ Dieppe/Route 132	Hwy 2	Moncton Airport	6.2	6.2		
Route 11	Bathurst	Campbellton	117.2		117.2	
Route 17	Campbellton	US Border (St. Leonard)	147.5		147.5	
8	Bathurst	Miramichi	70.2		70.2	
11	Miramichi	Hwy 15 (Shediac)	122.0		122.0	
8	Fredericton	Miramichi	194.2		194.2	
11	Acadian Peninsula		178.0		178.0	
Turgeon Rd./134	Hwy 11	Port of Belledune	4.7		4.7	
Total			1,828.5	994.7	833.8	-

Nova Scotia				Core	Feeder	Northern and Remote
Route	From	To	Length (km)	km	km	km
101	Bedford	Yarmouth (Ferry Terminal)	312.0	312.0		
102	Halifax	Truro (Hwy 104)	101.0	101.0		
104	N.B. Border	Port Hastings (Jct. Hwy 105)	271.6	271.6		
104/4	Port Hastings (Jct. Hwy 105)	Sydney (Hwy 125)	131.0	131.0		
125/105	Sydney (Hwy 125)	North Sydney ferry terminal	22.0	22.0		
118	Hwy 102	Hwy 111	14.0	14.0		
111	Hwy 118	Victoria Rd.	3.0	3.0		
303	Digby (Jct. 101)	Digby ferry terminal	8.0	8.0		
106	Hwy 104	Caribou ferry terminal	18.0	18.0		
Joseph Howe/Kempton/Barrington/Lower Water/Hollis	Hwy 102	Port of Halifax	12.0	12.0		
111/Pleasant/Eastern Passage	Hwy 118	Autoport terminal entrance	10.0	10.0		
103	Halifax (Jct. Hwy 102)	Yarmouth (Jct. Hwy 101)	295.5		295.5	
Total			1,198.1	902.6	295.5	-

Prince Edward Island				Core	Feeder	Northern and Remote
Route	From	To	Length (km)	km	km	km
1	Borden	Wood Islands	120.0	120.0		
Confederation Bridge	Midpoint of bridge span	Borden	8.0	8.0		
2	Summerside (Slemon Park Boundary)	Charlottetown (Perimeter Hwy)	59.0	59.0		
1A	Summerside (Hwy 2)	Albany (Route 1)	20.0	20.0		
Brackley Point Rd.	Hwy 1	Charlottetown Airport (Sherwood Rd.)	1.2	1.2		
2	Summerside (Slemon Park Boundary)	Tignish (Hwy 153)	77.0		77.0	
2	Charlottetown (Route 1, Perimeter Hwy)	Souris (MacPhee Ave.)	77.0		77.0	
3	Cherry Valley (Route 1)	Georgetown (Water St.)	34.0		34.0	
Total			396.2	208.2	188.0	-

Newfoundland and Labrador				Core	Feeder	Northern and Remote
Route	From	To	Length (km)	km	km	km
1	Port-aux-Basques	St. John's (Logy Bay Rd.)	911.0	911.0		
100	TCH	Argentia Ferry	44.0	44.0		
2	TCH	Port of St. John's	14.8	14.8		
Portugal Cove Rd/Route 40	TCH	St. John's Airport	1.3	1.3		
Lewin Parkway (Route 450A)	TCH	Port of Corner Brook	3.9	3.9		
340	TCH	Lewisporte Marine Terminal	15.0	15.0		
350	TCH	Botwood	17.6	17.6		
Route 430	TCH at Deer Lake	Ferry terminal at St. Barbe	298.0		298.0	
500	Quebec border	Labrador City (Avalon Dr.)	19.0			19.0
500/510	Labrador City (Avalon Dr.)	Blanc Sablon	1,144.0			1144.0
Total			2,468.6	1,007.6	298.0	1,163.0