

# Canada's National Highway System Annual Report 2016



September 2017

## Introduction

---

Canada's National Highway System is an evolution of the Trans-Canada Highway concept originally launched in 1949. Construction of the Trans-Canada Highway began in 1950 under the authority of the *Trans-Canada Highway Act*. In 1962 Prime Minister John Diefenbaker officially opened the Trans-Canada Highway, although construction continued until 1971. A key goal of the Trans-Canada Highway was to connect all the provinces together by highway, which was pursued through a cost-sharing partnership between federal and provincial governments to upgrade existing roadways to "Trans-Canada" standards. The Trans-Canada highway encompassed 7,821 km of highways spanning the width of the country from Victoria to St. John's.

The National Highway System (NHS) was established in 1988 by the Council of Ministers Responsible for Transportation and Highway Safety. The 24,500 kilometre network of key interprovincial and international highway linkages was identified through a federal-provincial-territorial cooperative study carried out over the period 1988 to 1992.

In September 2004 the Council of Ministers approved the addition of 2,700 kilometres of new routes to the NHS, as a result of a study undertaken by Transport Canada. In September 2005, following a comprehensive review of the NHS by a federal, provincial and territorial Task Force, further expansion of the system to include an additional 11,000 kilometres of routes was endorsed by the Council of Ministers.

In 2016 the National Highway System encompassed 38,049 kilometres of key highway linkages that are vital to both the economy and to the mobility of Canadians. Over 95 percent of the NHS is owned and operated by provincial and territorial governments. NHS roads under federal control (mostly roads through national parks and the Alaska Highway) account for about 3 percent of the NHS network and roads under municipal control account for about 2 percent. The federal government is also responsible for two major bridges in Montreal (Champlain and Jacques Cartier), and portions of the Bonaventure Expressway and the Honoré-Mercier Bridge.

The NHS comprises three categories of routes, each of which are defined by specific criteria that can be used to assess route eligibility:

### **Core Routes**

- Key interprovincial and international corridor routes (including links to intermodal facilities and important border crossings)

### **Feeder Routes**

- Key linkages to the Core Routes from population and economic centres (including links to intermodal facilities and important border crossings)

### **Northern and Remote Routes**

- Key linkages to Core and Feeder routes that provide the primary means of access to northern and remote areas, economic activities and resources.

The information contained in the report that follows offers insight to the role played by the National Highway System, its performance, the state of its infrastructure and the investment being made in its restoration and improvement.

The report was assembled using statistical information provided by the federal, provincial and territorial departments of transportation, and while effort was taken to ensure completeness and consistency, it should be noted that data for municipal roads on the NHS was not readily available, and except where explicitly noted, is not included in the summaries.

The content of this report is structured as follows:

- **Part 1** provides an overview of the trends and changes which have occurred with the performance and condition of the National Highway System since 2005
- **Part 2** presents in greater detail the most recent information collected from jurisdictions on the performance and condition of the National Highway System (generally for 2015 and 2016).
- **Appendix 1** provides a detailed breakdown of the routes contained in the National Highway System as of December 31, 2016

Additional information on the National Highway System, including past reports and studies, can be found on the Internet at [www.comt.ca](http://www.comt.ca).

# Table of Contents

---

<b>Highlights –Summary .....</b>	<b>5</b>
<b>System Map .....</b>	<b>6</b>
<b>Part 1: Developments and Highlights .....</b>	<b>7</b>
a) System Length and Route Inventory.....	7
b) Traffic and Travel .....	8
c) Safety .....	9
d) Border Crossings and Trade.....	10
e) Investment.....	11
f) Pavement Condition.....	13
g) Bridges and Structures .....	15
<b>Part 2: National Highway System – Data by Jurisdiction .....</b>	<b>17</b>
<b>Appendix 1 - National Highway System Route Inventory .....</b>	<b>24</b>

## Highlights –Summary

---

### *System Length*

- The length of the National Highway System was 38,049 km as of December 2016, essentially unchanged since 2005.
  - the NHS constitutes about 3.7% of the length of the public road network in Canada

### *Traffic*

- In 2015 the NHS carried over 134 billion vehicle-kilometers of travel, and 19 billion vehicle-kilometers of truck travel.
- Travel on the National Highway System increased 12% from 2005 to 2015.
- Truck travel on the NHS increased 8% from 2005 to 2015.
  - Truck travel on the Northern/Remote Network increased 72% from 2005 to 2015.

### *Safety*

- There were 83,000 collisions on the National Highway System in 2015, resulting in 495 fatalities and over 23,000 injuries
- While the number of collisions on the National Highway System increased 3% from 2005 to 2015:
  - the number of fatalities per year decreased 38% over the period and the number of injuries per year decreased 15%.

### *Canada-US Trade and Tourism at NHS Border Crossings*

- Since 2006 over \$3.5 trillion in Canada/US trade has passed through border crossings on the NHS
- The value of tourism at Canada/US border crossings on the NHS is about \$12 billion per year, but has fallen 11% since 2013

### *Investment*

- Since 2006/07 over \$39 billion has been invested in the National Highway System:
  - Provincial and territorial governments ~ \$33.7 billion (86%)
  - Federal government ~ \$4.9 billion (12%)
  - Other sources ~ \$0.7 billion (2%)
- In fiscal year 2016/17 nearly \$3.9 billion was invested in the National Highway System, unchanged from the previous year.

### *Pavement and Road Surface Condition*

- Since 2012, the condition of pavement surfaces on the NHS has remained relatively unchanged with 71% of the network in “good” condition and 23% in “fair” or “poor” condition.
- About 6% of the NHS remained unpaved in 2016.

### *Bridges and Structures*

- In 2016 there were over 10,600 bridges and structures on the NHS
- The number of bridges which are less than 10 years increased from 896 in 2006 to 2,326 in 2016.
- Since 2006 nearly 1,200 bridges on the NHS are new or have undergone major rehabilitation.
- The number of bridges which are over 50 years has also doubled over the period from (870 in 2006 to 2,117 in 2016).

# System Map





## Part 1: Developments and Highlights

---

### a) System Length and Route Inventory

Network Length (km)			
	2005	2016	Change
Core	27,608	27,722	+ 114 km
Feeder	4,490	4,411	- 79 km
Northern/Remote	5,922	5,916	- 6 km
<b>Total</b>	<b>38,021</b>	<b>38,049</b>	<b>+ 28 km</b>

#### Highlights:

- The length of the National Highway System has not changed significantly since a major review and expansion was approved by the Council of Ministers in 2005.
- Adjustments have been made annually in the length of the network due to:
  - Changes in route alignments resulting from construction
  - Changes in route segments included in the NHS when bypasses are completed
  - Corrections to route segment lengths resulting from new measurements.

## b) Traffic and Travel

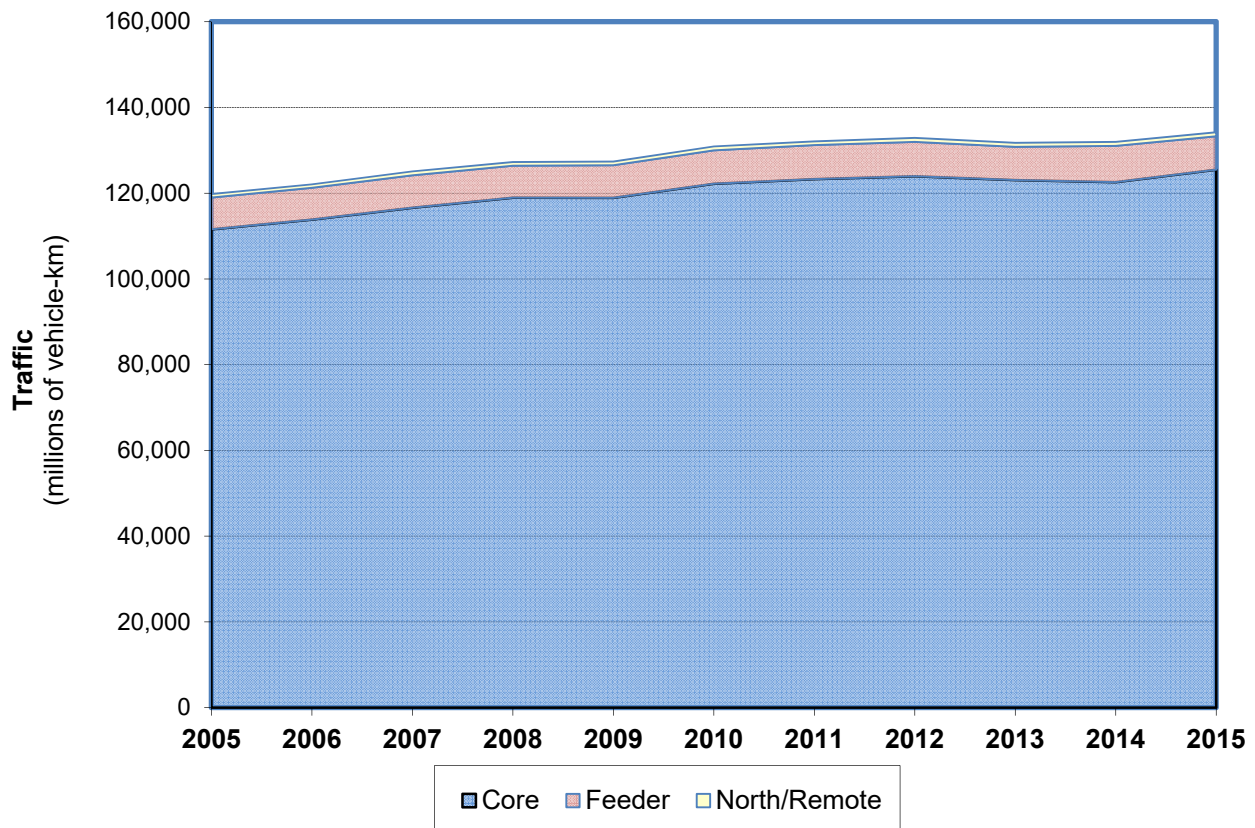
Travel (millions of Vehicle-Km)

	2005	2015 <sup>1</sup>	Change
<b>Core</b>	111,551	125,486	<b>+ 12%</b>
<b>Feeder</b>	7,439	7,781	<b>+ 5%</b>
<b>Northern/Remote</b>	828	932	<b>+ 13%</b>
<b>Total</b>	119,817	134,199	<b>+ 12%</b>

Truck Travel (millions of Vehicle-Km)

	2005	2015 <sup>1</sup>	Change
<b>Core</b>	17,079	18,427	<b>+ 8%</b>
<b>Feeder</b>	888	899	<b>+ 1%</b>
<b>Northern/Remote</b>	101	174	<b>+ 72%</b>
<b>Total</b>	18,068	19,500	<b>+ 8%</b>

Travel on the National Highway System 2005-2015



### Highlights:

- Travel on the National Highway System increased 12% from 2005 to 2015
- Truck travel on the NHS increased 8% over the period.
  - Truck travel on the Northern/Remote network has increased 72% since 2005

<sup>1</sup> Includes traffic data for Yukon from 2012

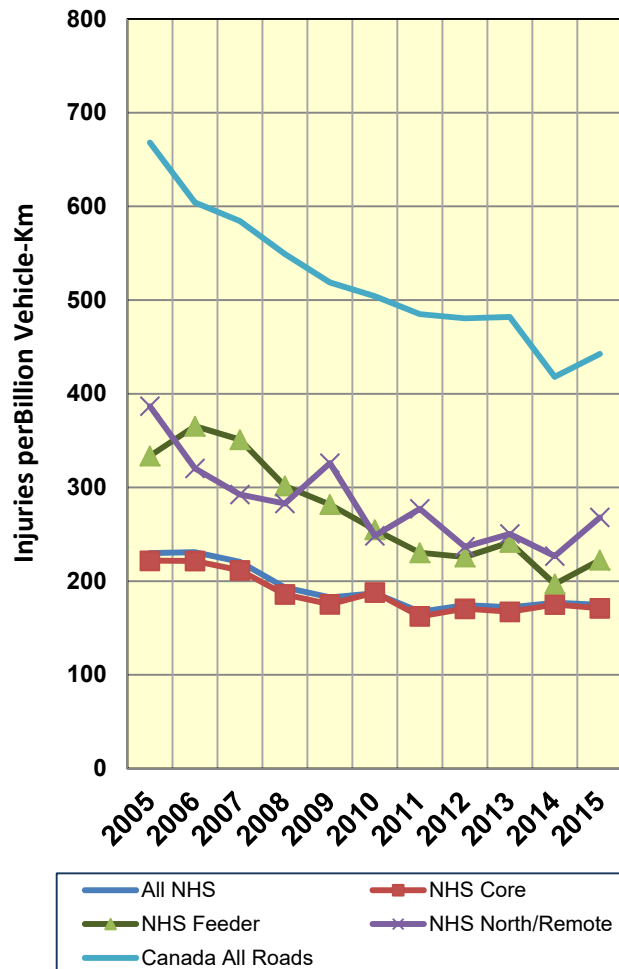


### c) Safety

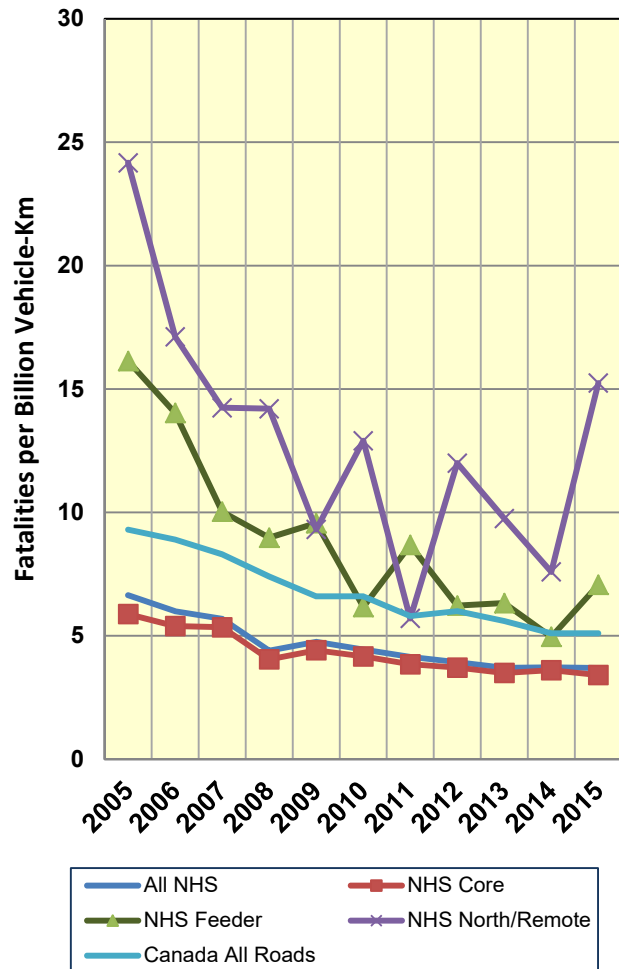
#### Collisions, Injuries and Fatalities on the National Highway System

	2005	2015 <sup>2</sup>	Change
Collisions	80,728	82,974	+ 3%
Injuries	27,539	23,330	- 15%
Fatalities	796	495	- 39%

#### Injury Rates



#### Fatality Rates



#### Highlights:

- While the number of collisions on the National Highway System increased 3% from 2005 to 2015:
  - the number of injuries per year decreased 15%
  - the number of fatalities per year dropped 39% over the period.

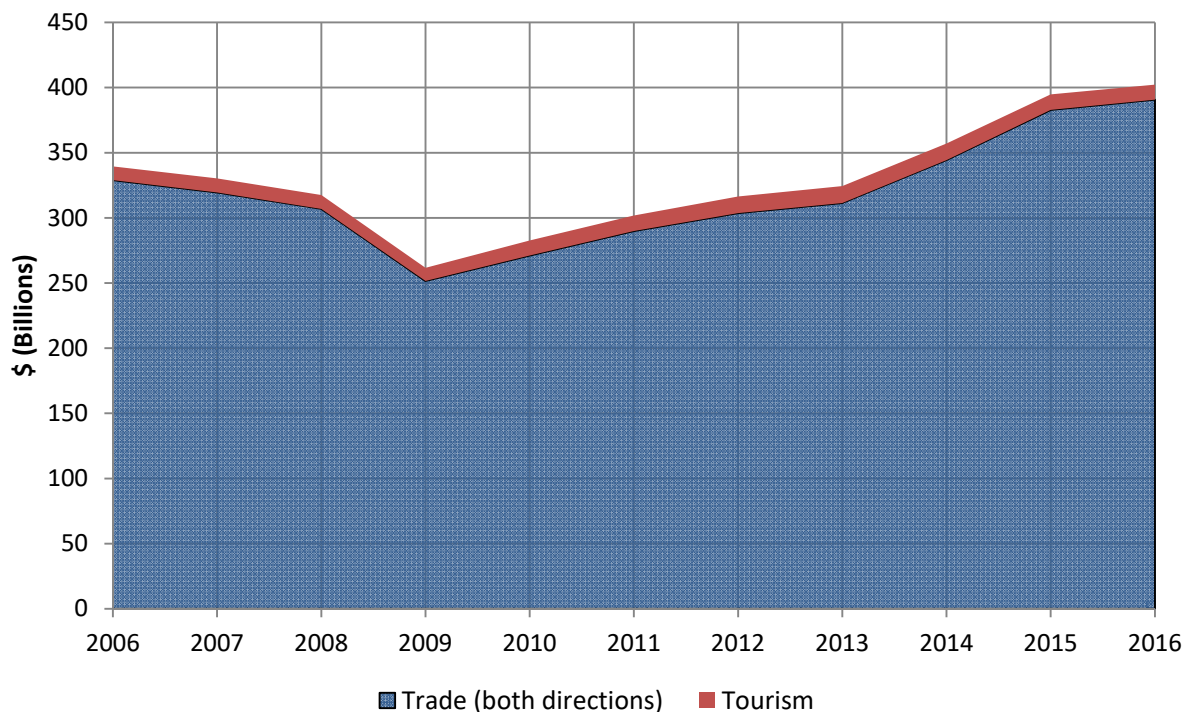
<sup>2</sup> Data for Manitoba is from 2014, Alberta is from 2012, New Brunswick from 2011

## d) Border Crossings and Trade

Value of Canada/US Trade and Tourism at NHS Border Crossings (\$ billions)

	2006	2007	2008	2009	2010	2011	2012	2013	2014	2015	2016
Trade <sup>3</sup>	328.9	319.5	306.9	251.6	271.1	289.9	303.7	311.4	344.3	382.8	390.7
Tourism	10.6	10.8	10.6	10.1	11.5	11.9	12.7	13.0	12.7	11.9	11.5
Total	339.5	330.3	317.5	261.7	282.6	301.8	316.4	324.4	357.0	394.7	402.2

Canada/US Trade and Tourism at NHS Border Crossings



### Highlights:

- Two-way trade (\$ value) passing through NHS border crossings has risen six consecutive years since the 2008-2009 recession ended. At the end of 2016, two-way trade was 19% higher than the recent peak level reported in 2006 and 55% higher than the nadir of 2009.
- In 2016, Ambassador Bridge accounted for over 32% of the two-way trade value among NHS border crossings, more than twice as much as the 2nd ranked crossing (Sarnia - Blue Water Bridge). Ambassador's two-way trade has grown 68% since 2009 and has eclipsed its 2006 level by 11%.
- The value of tourism for vehicles using NHS border crossings has fallen over 11% since 2013.

<sup>3</sup> Both directions

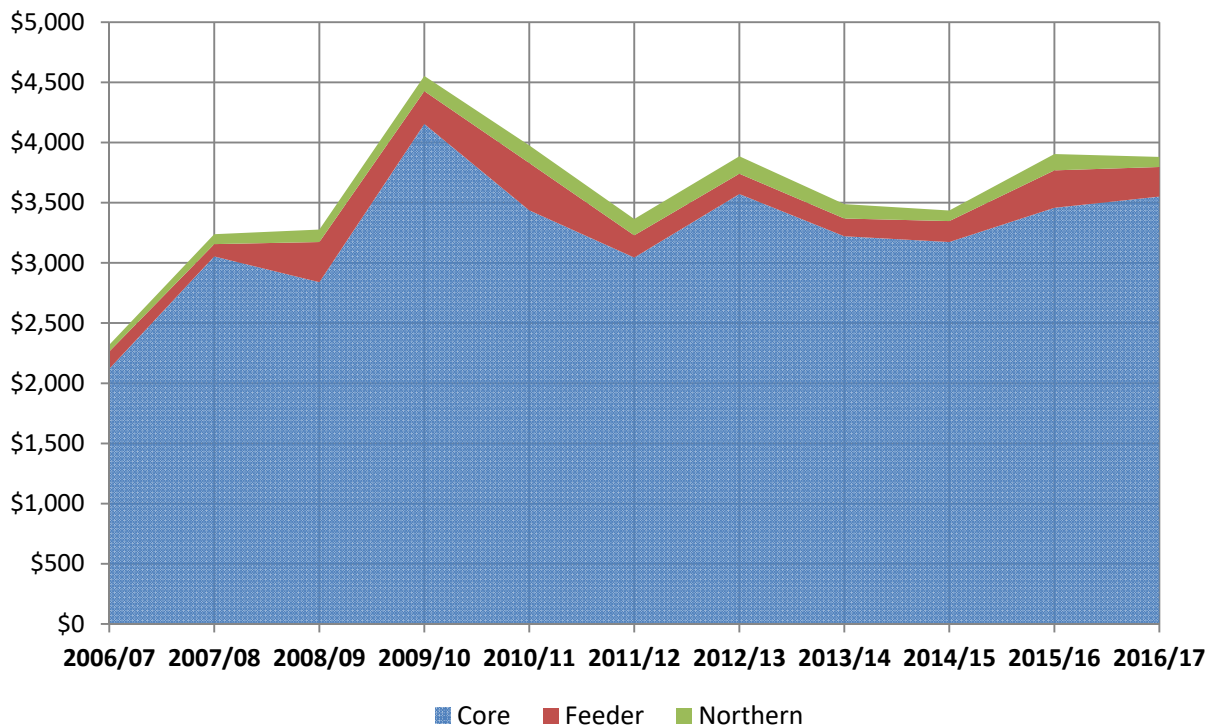
## e) Investment

### Expenditures (\$ millions)

	2006	2007	2008	2009	2010	2011
Core	\$ 2,120	\$ 3,053	\$ 2,840	\$ 4,155	\$ 3,436	\$ 3,045
Feeder	\$ 144	\$ 102	\$ 333	\$ 272	\$ 394	\$ 184
Northern/Remote	\$ 56	\$ 83	\$ 104	\$ 126	\$ 146	\$ 135
<b>Total</b>	<b>\$ 2,320</b>	<b>\$ 3,238</b>	<b>\$ 3,277</b>	<b>\$ 4,553</b>	<b>\$ 3,976</b>	<b>\$ 3,364</b>

	2012	2013	2014	2015	2016	Total (2006-16)
Core	\$ 3,572	\$ 3,222	\$ 3,173	\$ 3,457	\$ 3,551	<b>\$ 35,624</b>
Feeder	\$ 169	\$ 148	\$ 175	\$ 312	\$ 245	<b>\$ 2,479</b>
Northern/Remote	\$ 144	\$ 119	\$ 88	\$ 136	\$ 84	<b>\$ 1,219</b>
<b>Total</b>	<b>\$ 3,885</b>	<b>\$ 3,488</b>	<b>\$ 3,436</b>	<b>\$ 3,905</b>	<b>\$ 3,880</b>	<b>\$ 39,322</b>

### Investment in the National Highway System – 2006 to 2016 (millions)

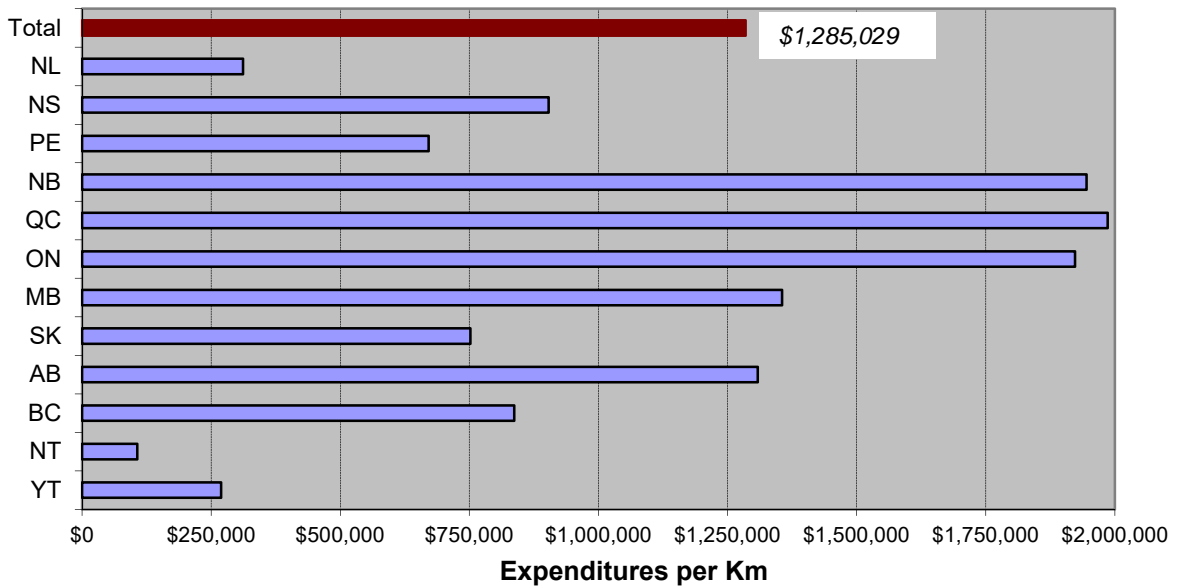


#### Highlights:

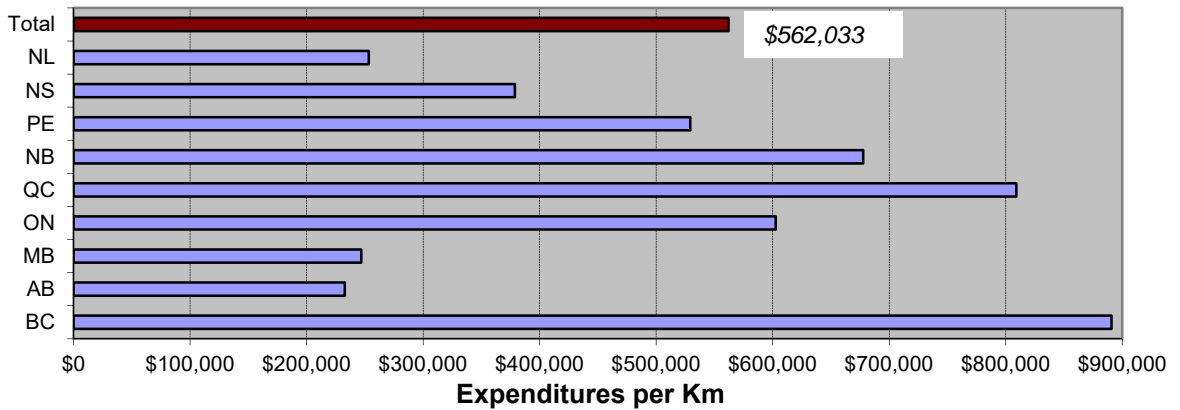
- In fiscal year 2016/17 nearly \$3.9 billion was spent on capital improvements to the National Highway System.
- Since 2006/07 over \$39 billion has been invested in the National Highway System:
  - Provincial and territorial governments ~ \$33.7 billion (86%)
  - Federal government ~ \$4.9 billion (12%)
  - Other sources ~ \$0.7 billion (2%)
- Over this period investment by NHS route category has been as follows:
  - Core Network ~ 91%
  - Feeder Network ~ 6%
  - Northern and Remote Network ~ 3%

## Investment in the National Highway System – 2006 to 2016

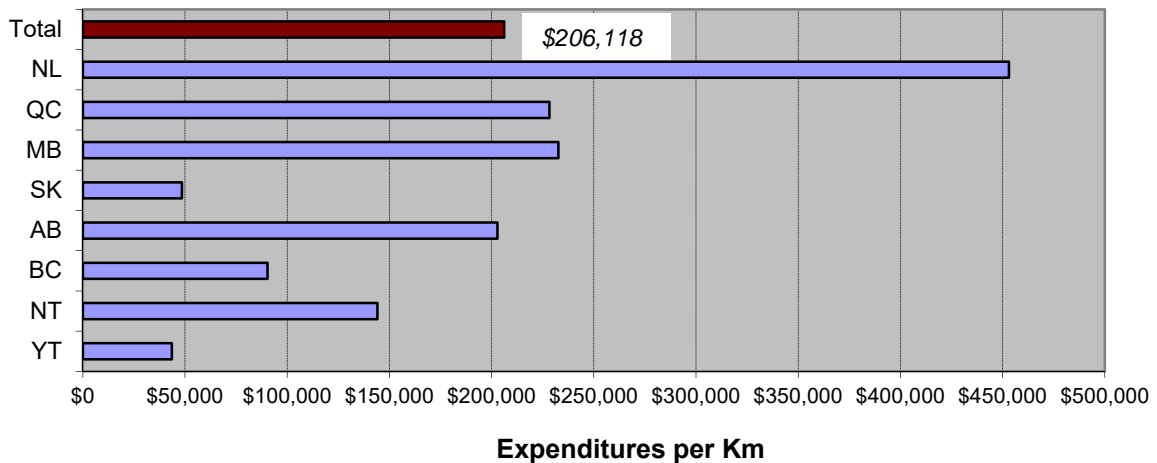
### Core Route Network: Expenditures per Km



### Feeder Route Network: Expenditures per Km



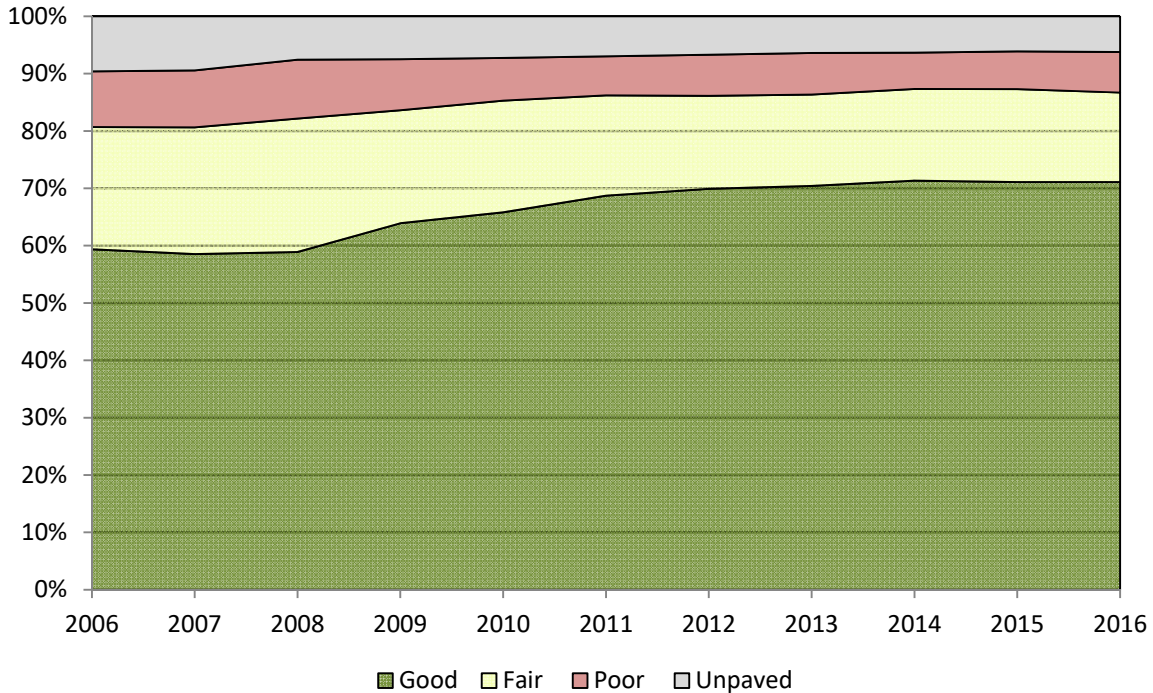
### Northern and Remote Route Network: Expenditures per Km



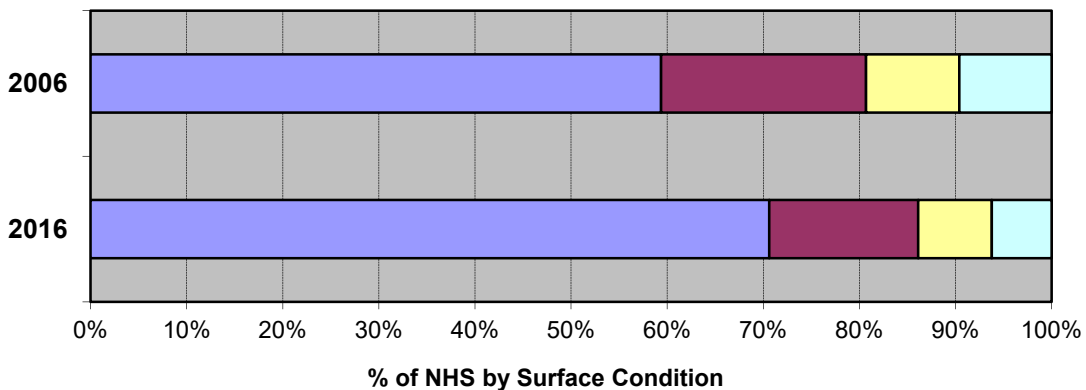
## f) Pavement Condition

### National Highway System: Surface Condition<sup>4</sup>

	2006	2016	Change
<b>Paved – Good</b>	21,649	25,130	<b>+ 16%</b>
<b>Paved - Fair</b>	7,781	5,514	<b>- 29%</b>
<b>Paved – Poor</b>	3,537	2,728	<b>- 23%</b>
<b>Unpaved</b>	3,501	2,212	<b>- 37%</b>



### National Highway System: Surface Condition Changes 2006 vs 2016



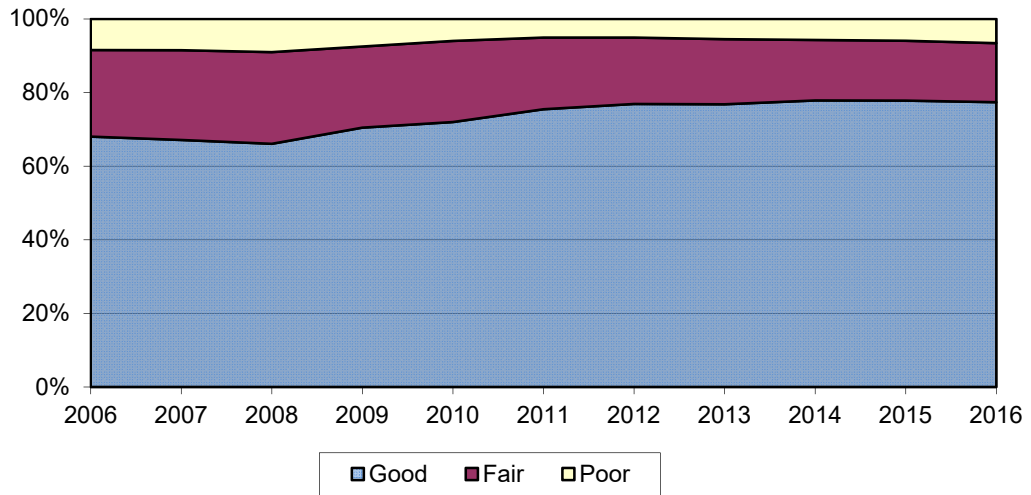
#### Highlights:

- Since 2012, the condition of pavement surfaces on the NHS has remained relatively unchanged with 71% of the network in “good” condition and 23% in “fair” or “poor” condition.
- About 6% of the NHS remained unpaved in 2016.

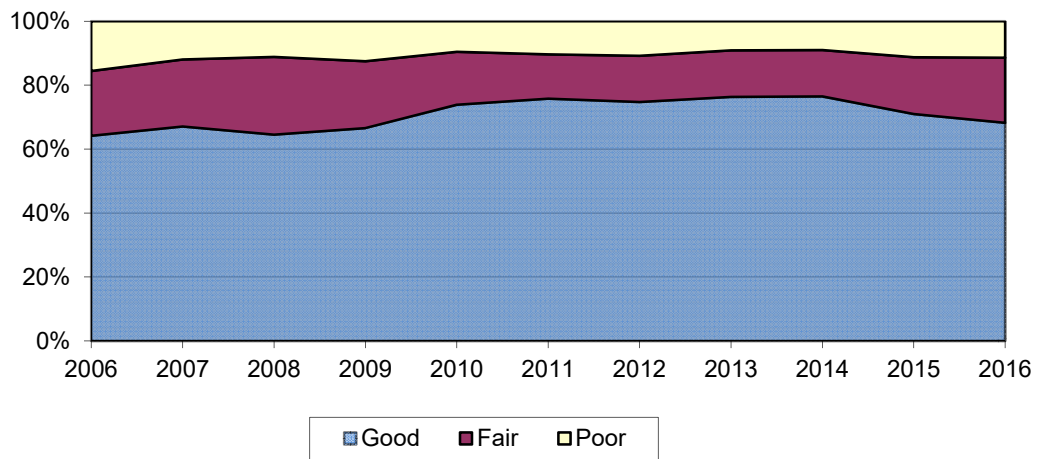
<sup>4</sup> Pavement condition rating information provided by jurisdictions is not based on identical criteria and thresholds; with some variations in the factors considered and approaches used to classify pavements as good, fair or poor. Totals may not equal the length of the entire NHS as pavement rating data is not available for all sections.

# NHS Surface Condition 2006-2016

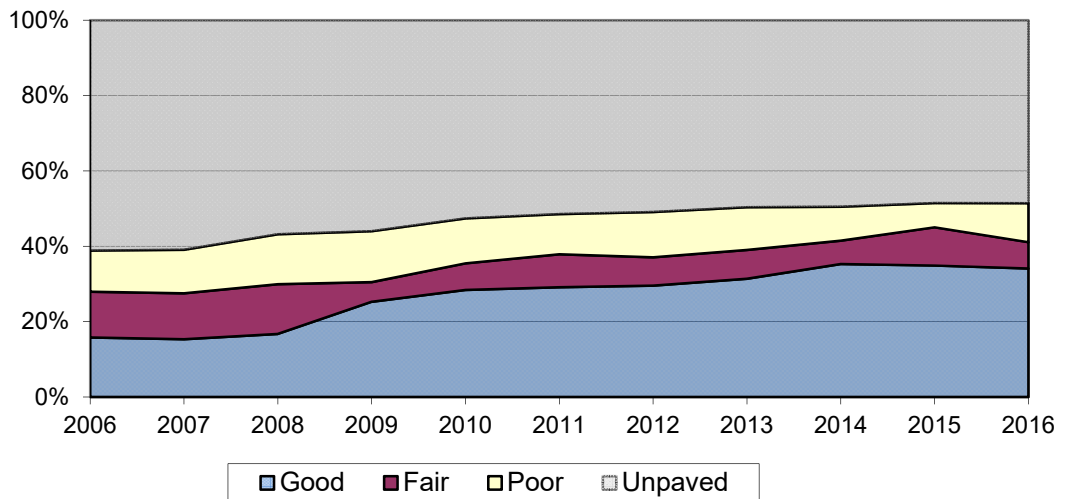
## Core Network



## Feeder Network



## Northern and Remote Network



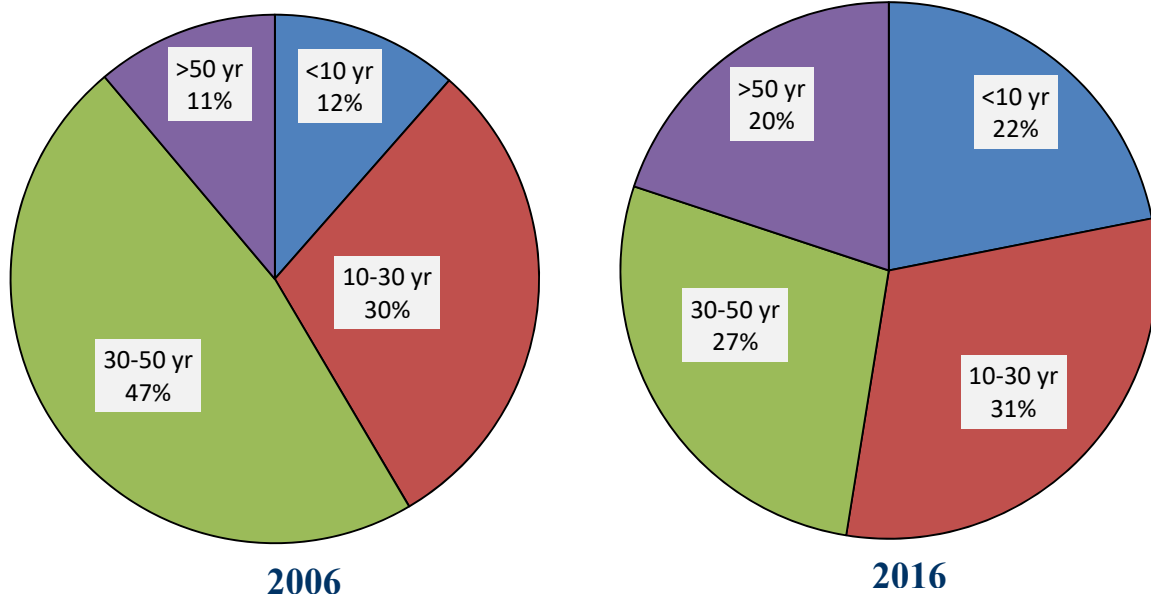


## g) Bridges and Structures

Number of Bridges and Structures on the NHS<sup>5</sup>

	2006	2016	Change
Core	6,676	9,267	+ 39%
Feeder	832	920	+ 11%
Northern/Remote	302	451	+ 49%
<b>Total</b>	<b>7,810</b>	<b>10,626</b>	<b>+ 36%</b>

NHS Bridges and Structures:  
Inventory Age Profile 2006 vs. 2016

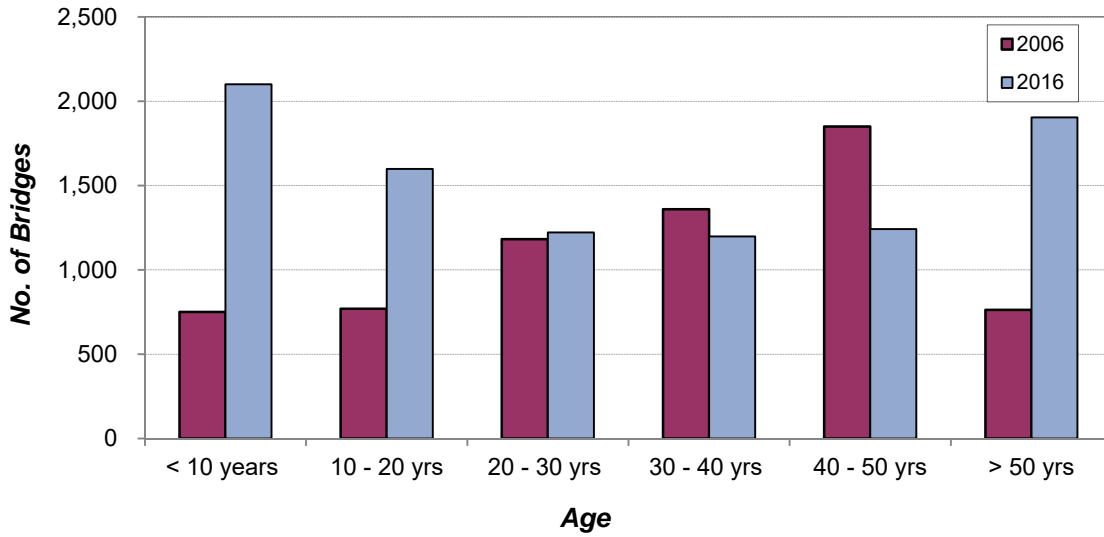


### Highlights:

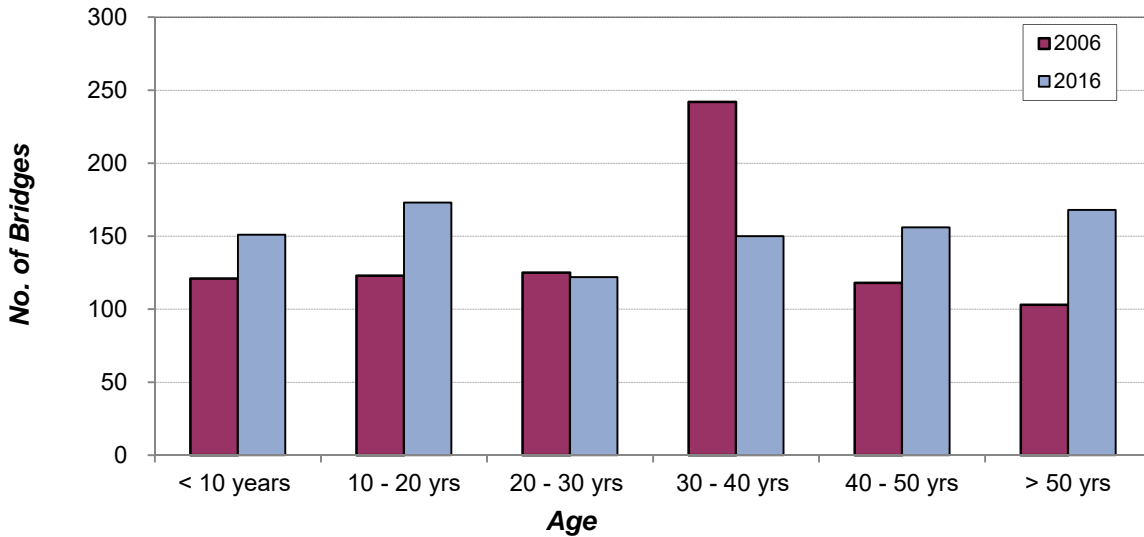
- Over the period 2006-2016 the number of bridges and structures reported on the NHS increased by 36% (due in part to adoption of a common definition and changes in the bridge inventory systems maintained by governments)
- The number of bridges that are less than 10 years old doubled from 2006 (896) to 2016 (1,873) as a reflection of increased investment and new construction.
  - Nearly 1200 bridges are new or have had major rehabilitation work since 2007.
- The number of bridges that are over 50 years old more than doubled from 2006 (870) to 2016 (2,117).

<sup>5</sup> Includes all bridges and structures with a span greater than 3.0 m (including large culverts)

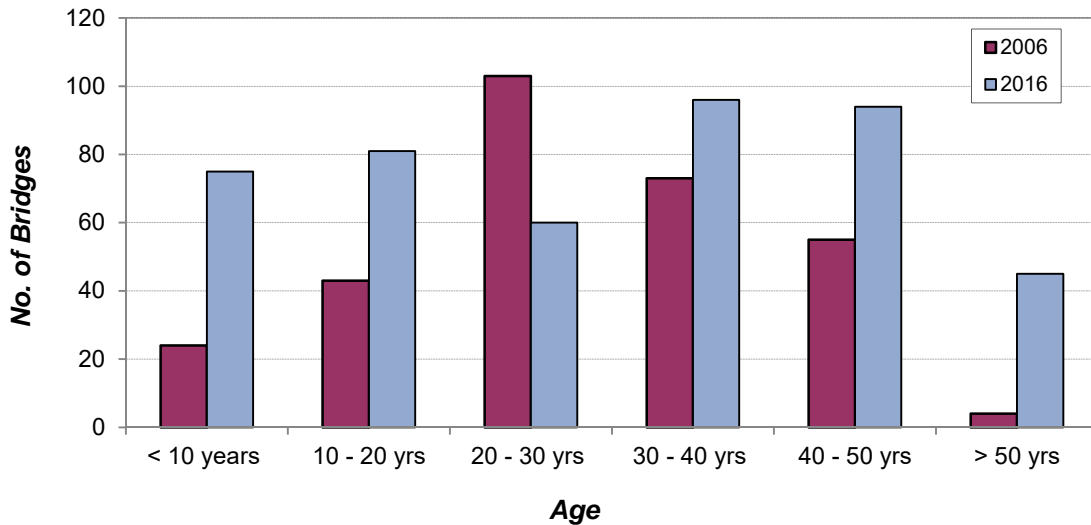
### NHS Core Routes: Bridge Age Profile



### NHS Feeder Routes: Bridge Age Profile



### NHS Northern and Remote Routes: Bridge Age Profile



## Part 2: National Highway System – Data by Jurisdiction

### National Highway System Length (December 2016)

Jurisdiction	Core Network (km)	Feeder Network (km)	Northern & Remote Network (km)	Total (km)
Yukon	1,068.6		947.9	2,016.5
Northwest Territories	575.6		847.2	1,422.8
Nunavut				
British Columbia	5,869.3	446.7	724.0	7,040.0
Alberta	4,065.9	215.5	196.5	4,477.9
Saskatchewan	2,452.3		236.3	2,688.6
Manitoba	985.1	741.9	368.2	2,095.2
Ontario	6,147.1	647.7		6,794.8
Québec	3,442.2	770.5	1434.7	5,647.4
New Brunswick	994.5	807.2		1,801.7
Prince Edward Island	208.7	189.5		398.2
Nova Scotia	904.7	294.3		1,199.0
Newfoundland and Labrador	1,007.6	298.0	1161.0	2,466.6
<b>Total NHS Length (km)</b>	<b>27,721.6</b>	<b>4,411.4</b>	<b>5,915.8</b>	<b>38,048.7</b>

The length information is based on the centerline distance of a roadway between start and end points (rather than lane-kilometers or “two-lane equivalent” lengths).

### Travel and Traffic (2015)<sup>6</sup>

#### Vehicle Kilometers of Travel 2015 (millions)

	Core	Feeder	Northern & Remote	Total
YT	250		81	331
NT	115		32	147
BC	15,582	1,237	113	16,932
AB	16,894	291	61	17,245
SK	4,817		145	4,962
MB	2,547	322	110	2,979
ON	48,119	1,151		49,270
QC	27,907	2,445	273	30,625
NB	3,168	1,201		4,369
PE	518	295		813
NS	3,651	641		4,292
NL	1,919	198	117	2,234
<b>Total</b>	<b>125,486</b>	<b>7,781</b>	<b>932</b>	<b>134,193</b>

#### Vehicle Kilometers of Truck Travel 2015 (millions)

	Core	Feeder	Northern & Remote	Total
YT	12		5	17
NT	22		7	29
BC	2,497	135	22	2,654
AB	1,828	23	6	1,857
SK	1,147		16	1,163
MB	488	52	15	555
ON	7,709	156		7,865
QC	3,386	314	66	3,766
NB	528	123		651
PE	46	22		68
NS	456	56		512
NL	308	18	37	363
<b>Total</b>	<b>18,427</b>	<b>899</b>	<b>174</b>	<b>19,500</b>

<sup>6</sup> Data for YT is from 2012

Collisions on the National Highway System – 2015

					<i>Collisions by Type</i>	
	<i>Core Routes</i>	<i>Feeder Routes</i>	<i>Northern &amp; Remote</i>	<i>Total</i>	<i>Fatal &amp; Injury</i>	<i>Property Damage Only</i>
YT	129		41	170	59	111
NT	24		26	50	12	38
BC	5,995	533	24	6,552	2,872	3,680
AB	13,822	280	51	14,153	2,183	11,970
SK	2,003		79	2,082	344	1,738
MB	794	239	91	1,124	72	1,052
ON	29,470	836		30,306	5,610	24,696
QC	22,162	2,377	228	24,767	4,328	20,439
NB	1,188	611		1,799	449	1,350
PE	239	90		329	120	209
NS	779	116		895	225	670
NL	641	64	42	747	246	501
<b>Total</b>	<b>77,246</b>	<b>5,146</b>	<b>582</b>	<b>82,974</b>	<b>16,520</b>	<b>66,454</b>

Fatalities

	<i>Core Routes</i>	<i>Feeder Routes</i>	<i>Northern &amp; Remote</i>	<i>Total</i>
YT	3			3
NT	1			1
BC	106	13	3	122
AB	76		1	77
SK	27			27
MB	9	1	2	12
ON	113	8		121
QC	53	10	5	68
NB	10	14		24
PE	6	4		10
NS	12	5		17
NL	12	1		13
<b>Total</b>	<b>428</b>	<b>56</b>	<b>11</b>	<b>495</b>

Injuries

	<i>Core Routes</i>	<i>Feeder Routes</i>	<i>Northern &amp; Remote</i>	<i>Total</i>
YT	55		24	79
NT	11		6	17
BC	3,854	343	20	4,217
AB	2,555	91	2	2,648
SK	453		27	480
MB	85	10	22	117
ON	7,940	329		8,269
QC	5,392	654	93	6,139
NB	348	226		574
PE	106	53		159
NS	279	46		325
NL	275	14	17	306
<b>Total</b>	<b>21,353</b>	<b>1,766</b>	<b>211</b>	<b>23,330</b>

<sup>7</sup> Safety data for MB is from 2014, for AB from 2012, for NB from 2011

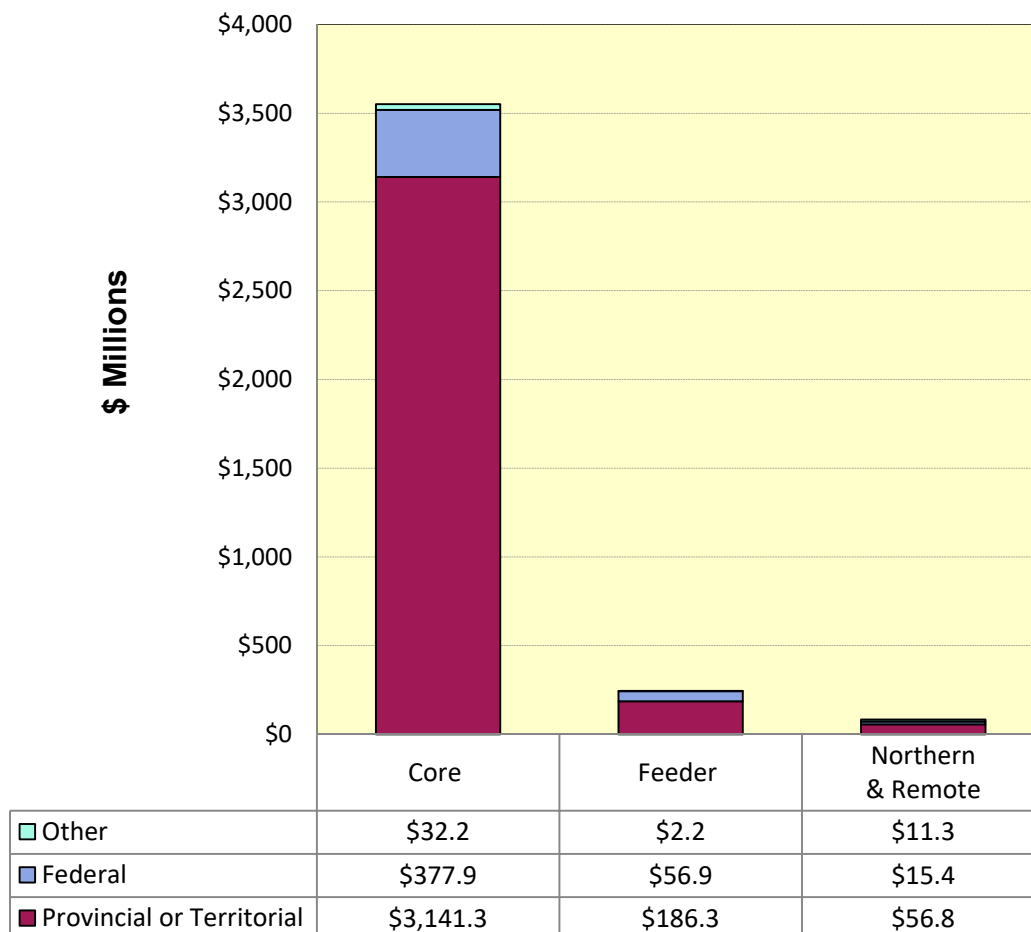
<sup>8</sup> Safety data for NL provided by Service NL and Parks Canada

**Investment (Fiscal Year 2016/17)**

**Investment in the NHS by Jurisdiction – Fiscal Year 2016/17**  
(millions)

	<i>Federal</i>	<i>Provincial or Territorial</i>	<i>Other</i>	<i>Total</i>
YT	\$4.5	\$4.2	\$10.8	\$19.6
NT	\$15.1	\$12.3		\$27.4
BC	\$116.2	\$352.5	\$8.7	\$477.4
AB	\$30.6	\$216.2		\$246.8
SK	\$131.2	\$525.8		\$657.0
MB	\$8.8	\$204.1		\$212.9
ON	\$14.9	\$1,264.9		\$1,279.8
QC	\$32.0	\$587.2	\$26.2	\$645.4
NB	\$13.6	\$132.0		\$145.6
PE	\$5.0	\$5.9		\$10.9
NS	\$26.8	\$55.8		\$82.6
NL	\$51.4	\$23.4		\$74.8
<b>Total</b>	<b>\$450.1</b>	<b>\$3,384.4</b>	<b>\$45.7</b>	<b>\$3,880.2</b>

**Investment in the National Highway System - Fiscal Year 2016/17**

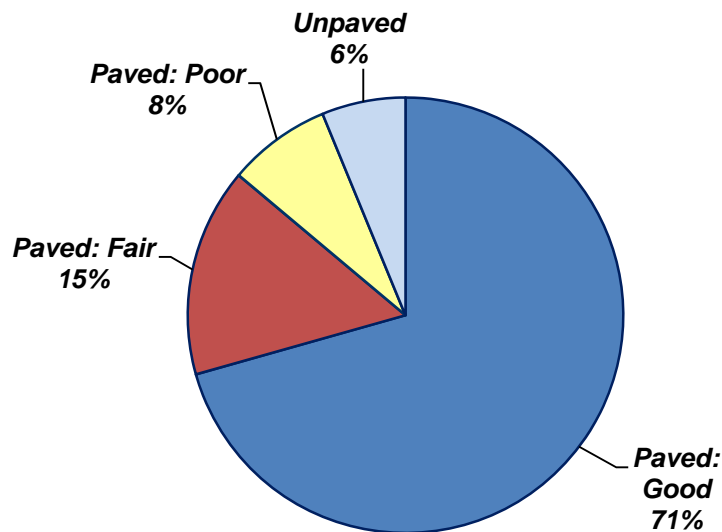


## Pavement and Road Surface Condition (2016)

### Surface Condition – All NHS Routes<sup>9,10</sup>

	<i>Length (km)</i>	<i>Paved - Good</i>	<i>Paved - Fair</i>	<i>Paved - Poor</i>	<i>Unpaved</i>
YT	2,017	1,083	255	214	464
NT	1,423	620	53	47	703
BC	7,040	4,278	1,197	404	374
AB	4,478	2,997	1,088	129	
SK	2,689	2,537		78	
MB	2,095	1,731		346	
ON	6,795	5,364	1,162	269	
QC	5,648	3,032	875	803	252
NB <sup>11</sup>	1,802	1,095	418	344	
PE	398	245	83	62	
NS	1,199	1,171	8		
NL	2,467	977	374	32	419
<b>Total</b>	<b>38,049</b>	<b>25,130</b>	<b>5,514</b>	<b>2,728</b>	<b>2,212</b>

### National Highway System – Surface Condition



2016

<sup>9</sup> Pavement condition rating information provided by jurisdictions is not based on identical criteria and thresholds;

- Transports Québec does not normally use the categories of “Good”, “Fair” and “Poor”. The thresholds used to differentiate “Good” from “Fair” are not used in Quebec, and the thresholds to differentiate “Fair” from “Poor” are based on thresholds for intervention, which vary from one class of road to another.
- Saskatchewan and Manitoba use only two pavement condition rating categories; “Good” and “Poor”.

<sup>10</sup> In some cases the cell totals for "good, fair, poor and unpaved" do not add up to the total length of NHS in each jurisdiction, primarily because pavement rating data was not available for some sections

<sup>11</sup> NB data is from 2015



**National Highway System – Core Routes  
Surface Condition – Km by Category (December 2016)**

	<i>Length</i>	<i>Paved - Good</i>	<i>Paved - Fair</i>	<i>Paved -Poor</i>	<i>Unpaved</i>
YT	1,069	797	178	93	
NT	576	524	23	29	
BC	5,869	3,693	1,105	364	
AB	4,066	2,745	941	115	
SK	2,452	2,308		71	
MB	985	784		179	
ON	6,147	4,909	977	261	
QC	3,442	2,305	597	479	
NB	995	736	157	105	
PE	209	122	45	33	
NS	905	879	8		
NL	1,008	734	255	19	
<b>Total</b>	<b>27,722</b>	<b>20,536</b>	<b>4,286</b>	<b>1,749</b>	<b>-</b>

**National Highway System – Feeder Routes  
Surface Condition – Km by Category (December 2016)**

	<i>Length</i>	<i>Paved - Good</i>	<i>Paved - Fair</i>	<i>Paved -Poor</i>	<i>Unpaved</i>
YT					
NT					
BC	447	324	82	39	
AB	216	114	98	4	
SK					
MB	742	674		70	
ON	648	455	185	8	
QC	771	482	168	116	
NB	807	359	262	239	
PE	190	123	38	29	
NS	294	292			
NL	298	218	76	4	
<b>Total</b>	<b>4,411</b>	<b>3,041</b>	<b>908</b>	<b>508</b>	<b>-</b>

**National Highway System – Northern and Remote Routes  
Surface Condition – Km by Category (December 2016)**

	<i>Length</i>	<i>Paved - Good</i>	<i>Paved - Fair</i>	<i>Paved -Poor</i>	<i>Unpaved</i>
YT	948	286	77	121	464
NT	847	96	30	18	703
BC	724	261	10	1	374
AB	197	138	49	10	
SK	236	229		7	
MB	368	273		97	
ON					
QC	1435	245	110	208	252
NB					
PE					
NS					
NL	1161	25	43	9	419
<b>Total</b>	<b>5,916</b>	<b>1,553</b>	<b>319</b>	<b>471</b>	<b>2,212</b>

## Bridges and Structures (2016)

### Number of NHS Bridges and Structures<sup>12</sup> (December 2016)

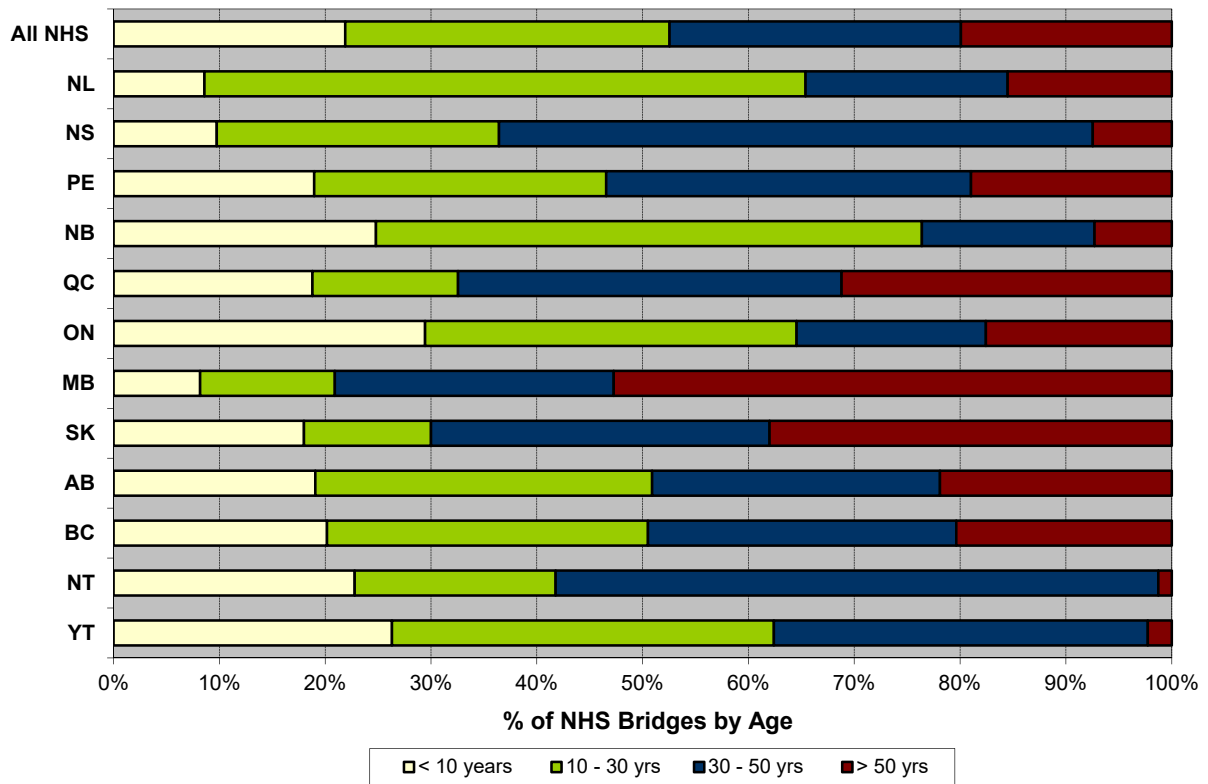
	<i>Number of Bridges</i>	<i>Core</i>	<i>Feeder</i>	<i>Northern &amp; Remote</i>
YT	133	81		52
NT	79	19		60
BC	2,156	1,917	178	61
AB	776	754	12	10
SK	100	91		9
MB	110	92	12	6
ON	3,315	3,181	134	
QC	2,070	1,738	226	106
NB	754	566	188	
PE	58	33	25	
NS	656	541	115	
NL	419	254	18	147
<b>Total</b>	<b>10,626</b>	<b>9,267</b>	<b>908</b>	<b>451</b>

### NHS Bridges and Structures – Number by Age

	<i>No. of Bridges</i>	<i>&lt; 10 yrs</i>	<i>10 - 20 yrs</i>	<i>20 - 30 yrs</i>	<i>30 - 40 yrs</i>	<i>40 - 50 yrs</i>	<i>&gt; 50 yrs</i>
YT	133	35	25	23	39	8	3
NT	79	18	5	10	15	30	1
BC	2,156	435	344	310	358	270	439
AB	776	148	175	72	116	95	170
SK	100	18	7	5	3	29	38
MB	110	9	4	10	4	25	58
ON	3,315	976	615	549	376	217	582
QC	2,070	389	192	93	220	530	646
NB	754	187	274	115	70	53	55
PE	58	11	9	7	11	9	11
NS	656	64	72	103	189	179	49
NL	419	36	131	107	42	38	65
<b>Total</b>	<b>10,626</b>	<b>2,326</b>	<b>1,853</b>	<b>1,404</b>	<b>1,443</b>	<b>1,483</b>	<b>2,117</b>

<sup>12</sup> Includes all bridges and structures with a span greater than 3.0 m (including large culverts)

## NHS Bridges and Structures – Age Profile by Jurisdiction (as of December 2016)

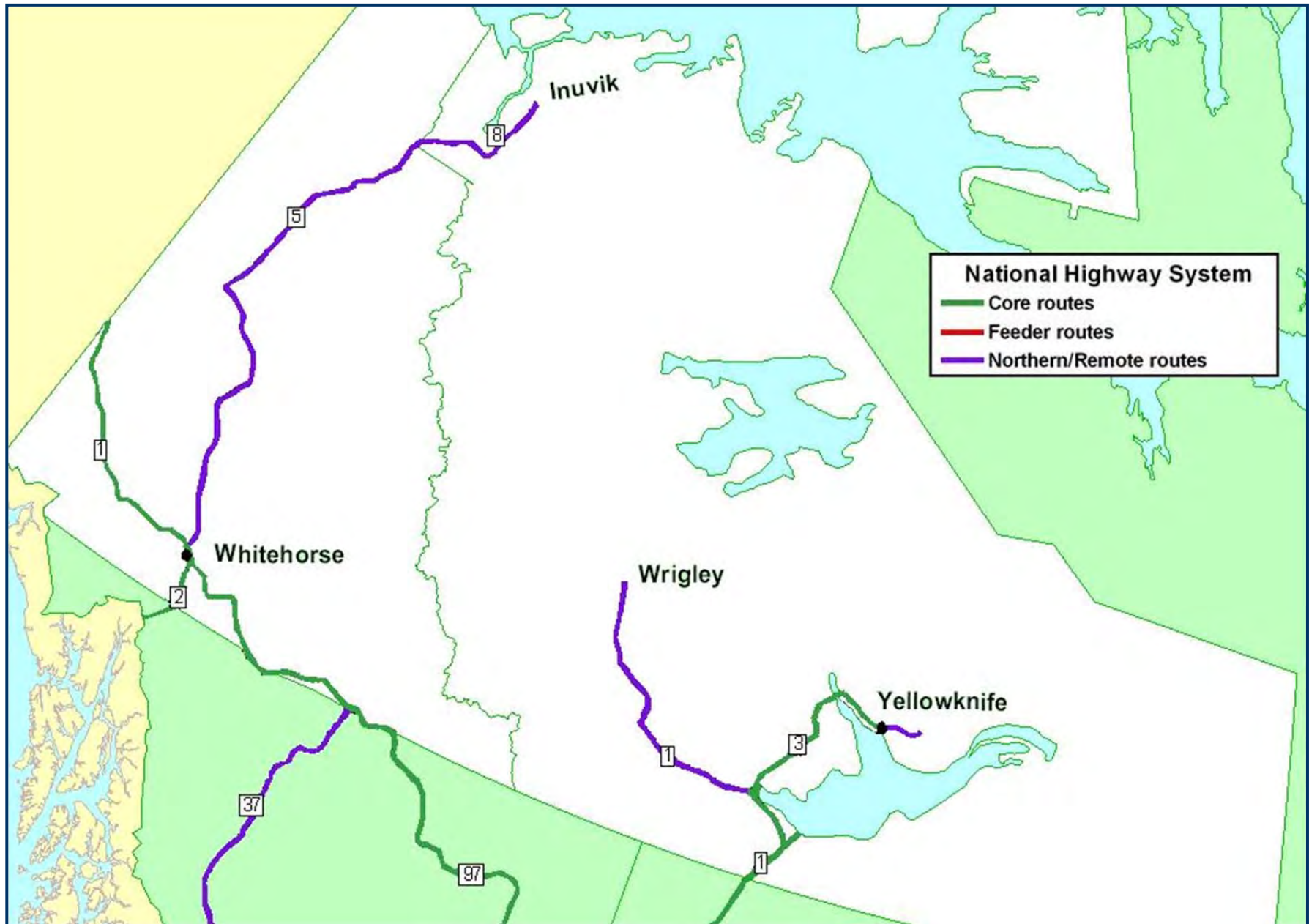


## Appendix 1 - National Highway System Route Inventory

(As of December 31, 2016)

Jurisdiction	Core Network (km)	Feeder Network (km)	Northern & Remote Network (km)	Total – National Highway System (km)	Length Change: 2016 vs 2015
Yukon	1068.6		947.9	2016.5	
Northwest Territories	575.6		847.2	1422.8	
Nunavut					
British Columbia	5869.3	446.7	724.0	7040.0	
Alberta	4065.9	215.5	196.5	4477.9	29.7
Saskatchewan	2452.3		236.3	2688.6	10.3
Manitoba	985.2	741.9	368.2	2095.3	0.1
Ontario	6147.1	647.7		6794.8	-41.5
Québec	3442.2	770.5	1434.7	5647.4	-3.5
New Brunswick	994.5	807.2		1801.7	-23.3
Prince Edward Island	208.7	189.5		398.2	1.2
Nova Scotia	904.7	294.3		1199.0	
Newfoundland and Labrador	1007.6	298.0	1161.0	2466.6	
	<b>27721.7</b>	<b>4411.4</b>	<b>5915.8</b>	<b>38048.8</b>	<b>-27.0</b>

## National Highway System – Yukon and Northwest Territories



<b>Yukon</b>				<i>Core</i>	<i>Feeder</i>	<i>Northern and Remote</i>
Route	From	To	Length (km)	km	km	km
1	BC Border-km 967 (Crossing #7)	Alaska Border	934.9	934.9		
2	Whitehorse	Alaska Border	133.7	133.7		
Klondike Highway	Hwy 1	Jct. Dempster Hwy	482.9			482.9
Dempster Highway	Klondike Highway	NWT border	465.0			465.0
<b>Total</b>			<b>2,016.5</b>	1,068.6	-	947.9

<b>Northwest Territories</b>				<i>Core</i>	<i>Feeder</i>	<i>Northern and Remote</i>
Route	From	To	Length (km)	km	km	km
1	Alberta border	Highway 3	187.0	187.0		
2	Enterprise	Hay River	48.6	48.6		
2	Highway 1	Yellowknife	340.0	340.0		
8	Yukon Border	Inuvik	272.5			272.5
1	Highway 3	Wrigley	505.5			505.5
4	Yellowknife (Hwy 3)	km 69.2	69.2			69.2
<b>Total</b>			<b>1,422.8</b>	575.6	-	847.2



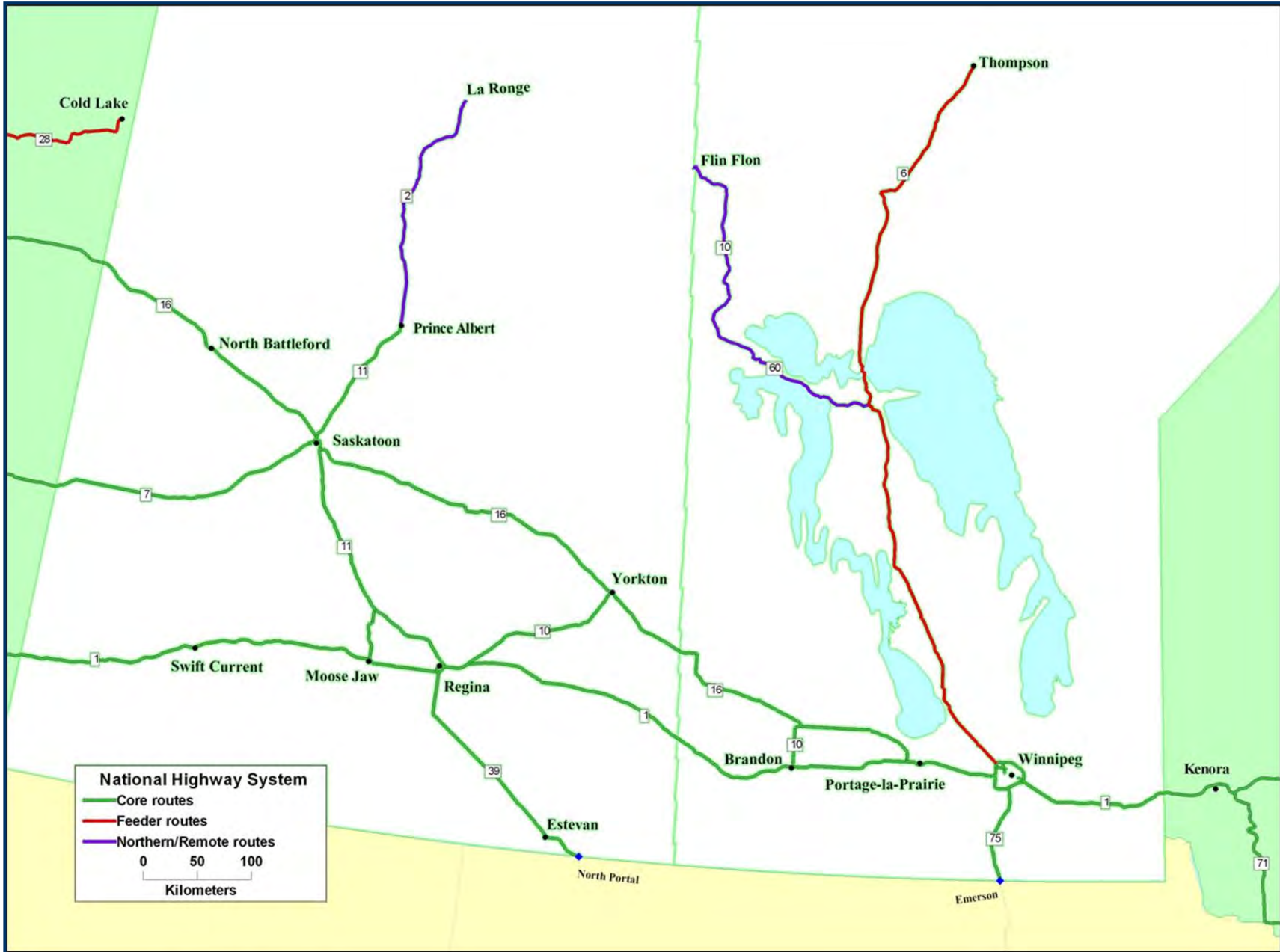
# National Highway System – British Columbia and Alberta



British Columbia				Core	Feeder	Northern and Remote
Route	From	To	Length (km)	km	km	km
1	Alberta border	Victoria (Dallas Rd, via Departure Bay)	993.0	993.0		
2	Alberta border	Dawson Creek (Jct 97)	42.0	42.0		
3	Alberta border	Hope (Jct. 5)	833.0	833.0		
5	Tete Jaune Cache (Jct 16)	Hope (Jct. 1)	531.0	531.0		
16	Alberta border	Prince Rupert	1,074.0	1,074.0		
17	Victoria (Oswego/Belleville)	Ladner (Jct 99)	44.0	44.0		
97	Cache Creek (Jct 1)	Yukon Border-km 967 (Crossing #7)	1,812.0	1,812.0		
99	U.S. Border (Peace Arch)	North Vancouver (Jct 1)	59.0	59.0		
8th Ave./15	U.S. Border (Pacific Highway)	Highway 99	3.0	3.0		
11	Abbotsford (Jct 1)	U.S. Border (Huntingdon)	3.0	3.0		
19	Nanaimo (Jct 1)	Parksville (Jct. 4A)	41.0	41.0		
97	Near Peachland (Jct 97C)	Swan Lake (Jct 97A)	80.0	80.0		
97A	Swan Lake (Jct 97)	Sicamous (Jct 1)	66.0	66.0		
97B	Grindrod (Jct 97A)	Salmon Arm (Jct 1)	14.0	14.0		
97C	Merritt (Jct 5)	Near Peachland (Jct 97)	106.0	106.0		
99	Horseshoe Bay (Jct 1)	Whistler (Lorimer Rd.)	103.0	103.0		
McGill	Hwy 1	Port of Vancouver - Vanterm and Centerm	4.0	4.0		
Deltaport Way	Hwy 17	Port of Vancouver - Deltaport	10.0	10.0		
River Road and Elevator Road	Jct 17A/99	Fraser River Port	15.0	15.0		
Fairview Terminals Rd	Hwy 16	Port of Prince Rupert	2.0	2.0		
Highway 19 - link to Duke Pt Ferry Terminal	Hwy 1	Duke Pt. Ferry Terminal - Duke Pt.	7.6	7.6		
Bridgeport Rd/Sea Island Way	Hwy 99	Vancouver International Airport	1.7	1.7		
McTavish/Canora/Willingdon Rds	Jct Hwy 17/McTavish Rd.	Victoria International Airport	0.8	0.8		
Airport Way	Hwy 97	Kelowna Airport	0.3	0.3		
Mt. Lehman Road	Hwy 1	Abbotsford Airport, Jct. Mt. Lehman/Approach Dr.	2.9	2.9		
Old Cariboo Hwy	Hwy 16	Prince George Airport, Jct. Johnson/Ellis Rds.	5.0	5.0		
176th St. & 104th Ave.	Jct Hwy 1/176th street	CN Vancouver Intermodal Terminal (VIT)	2.0	2.0		
Highways 7B/ 7/Kennedy Road	Jct Hwy 1/7B	CP Vancouver Intermodal Facility (VIF)	14.0	14.0		
4	Highway 19	Port Alberni (River Rd.)	38.0		38.0	
101	Vancouver (Langdale ferry terminal)	Powell River (Duncan St.)	112.2		112.2	
97	Near Peachland (Jct 97C)	Penticton (Railway St.)	44.1		44.1	
97	Penticton (Railway St.)	U.S. Border (Osoyoos)	65.0		65	
95	Curzon (Jct 3)	U.S. Border (Kingsgate)	11.3		11.3	
19	Parksville (Jct 4A)	Campbell River (Jct 28)	118.4		118.4	
37	Terrace (Jct 16)	Kitimat (Nalabila Blvd.)	57.7		57.7	
37	Kitwanga (Jct 16)	Yukon Border	724.0			724.0
<b>Total</b>			<b>7,040.0</b>	<b>5,869.3</b>	<b>446.7</b>	<b>724.0</b>

Alberta				Core	Feeder	Northern and Remote
Route	From	To	Length (km)	km	km	km
1	Sask. Border	B.C. Border	534.7	534.7		
2	Fort Macleod	Edmonton (Jct. 16)	447.8	447.8		
	Donnelly	N. of Grimshaw	82.4	82.4		
3	Medicine Hat	B.C. Border	324.1	324.1		
4	U.S. border (Coutts)	Lethbridge	103.4	103.4		
9	Calgary	Sask. Border	324.8	324.8		
16	Sask. Border	B.C. Border	641.1	641.1		
35	N. of Grimshaw	N.W.T. Border	465.4	465.4		
43	Edmonton	B.C. Border	498.9	498.9		
49	Valleyview	Donnelly	76.6	76.6		
15/28A/28/63	Jct. Hwy 16	Fort McMurray (Athabasca River)	431.3	431.3		
96th Ave/Barlow Trail	Deerfoot Trail (Hwy 2)	Calgary International Airport	2.9	2.9		
69	Junction Hwy 63	Fort McMurray Airport	6.0	6.0		
Barlow Trail/114th Ave SE/52nd St SE/Dufferrin Place	Deerfoot Trail (Hwy 2)	CP Intermodal Terminal	3.4	3.4		
Barlow Trail/54th Ave SE/27th St SE	Deerfoot Trail (Hwy 2)	CN Intermodal Terminal	1.9	1.9		
184th Street	Yellowhead Trail (Hwy 16)	CN Intermodal Terminal	0.9	0.9		
201	Junction of Hwy 1 W. of Calgary	Junction of Hwy 1 E. of Calgary	42.4	42.4		
216	Junction of Hwy 16 W. of Edmonton	Junction of Hwy 16 E. of Edmonton	78.0	78.0		
28	Junction Hwy 63	Cold Lake (10 St.)	215.5		215.5	
Hwy 58	Rainbow Lake (Rainbow Dr.)	Highway 35 (High Level)	139.6			139.6
Hwy 58	Highway 35 (High Level)	Highway 88	56.9			56.9
<b>Total</b>			<b>4,477.9</b>	<b>4,065.9</b>	<b>215.5</b>	<b>196.5</b>

# National Highway System – Saskatchewan and Manitoba



Saskatchewan				Core	Feeder	Northern and Remote
Route	From	To	Length (km)	km	km	km
01	Manitoba border	Regina (Jct. Hwy 6)	245.3	245.3		
01	Regina (Jct. Hwy 6)	Alta. Border	405.2	405.2		
16	Manitoba border	Saskatoon (Jct. Circle Dr.)	420.0	420.0		
16	Saskatoon (Jct. Circle Dr.)	Alta. Border	272.1	272.1		
07	Saskatoon (Jct. Circle Dr.)	Alta. Border	254.6	254.6		
11	Regina	Saskatoon	253.3	253.3		
6/39	Regina	U.S. Border (North Portal)	237.9	237.9		
2/11	Saskatoon	Prince Albert (15 <sup>th</sup> St)	142.5	142.5		
02	Moose Jaw	Hwy 11	51.4	51.4		
10	Hwy 1	Yorkton	160.5	160.5		
Lewvan Drive & Regina Ave	Hwy 1	Regina Airport (Empress Rd.)	4.9	4.9		
Airport Drive	Circle Drive	Saskatoon Airport	1.7	1.7		
11th Street and Chappel Drive	Highway 7	Saskatoon Chappel Yard – CN Rail terminal	3.0	3.0		
02	Prince Albert (15th St.)	La Ronge (Brown St.)	236.3			236.3
<b>Total</b>			<b>2,688.6</b>	<b>2,452.3</b>	<b>-</b>	<b>236.3</b>

Manitoba				Core	Feeder	Northern and Remote
Route	From	To	Length (km)	km	km	km
1	Ontario Border	Sask. Border	500.1	500.1		
16	Portage-la-Prairie	Sask. Border	267.2	267.2		
75	Winnipeg	U.S. border (Emerson)	93.6	93.6		
10	Brandon (PTH 1)	Highway 16 SE	41.5	41.5		
Wpg Route 90, Sargent/Wellington	PTH 101	James H Richardson Airport	13.3	13.3		
PTH 190 (CentrePort Canada Way) / Inkster Blvd. / Keewatin St.	PTH 101	CPR Weston	13.8	13.8		
PTH 1 East/Plessis Rd	PTH 100	560 Plessis Rd./Symington Yard	6.0	6.0		
Hwy 101 (North Perimeter Rd)	East Jct Hwy 1	West Jct Hwy 1	49.6	49.6		
PTH 6	Highway 100	Thompson (Thompson Dr. N)	741.9		741.9	
PTH 60/10	Highway 6	Flin Flon (4 <sup>th</sup> Ave.)	368.2			368.2
<b>Total</b>			<b>2,095.2</b>	<b>985.1</b>	<b>741.9</b>	<b>368.2</b>



# National Highway System – Ontario and Western Québec

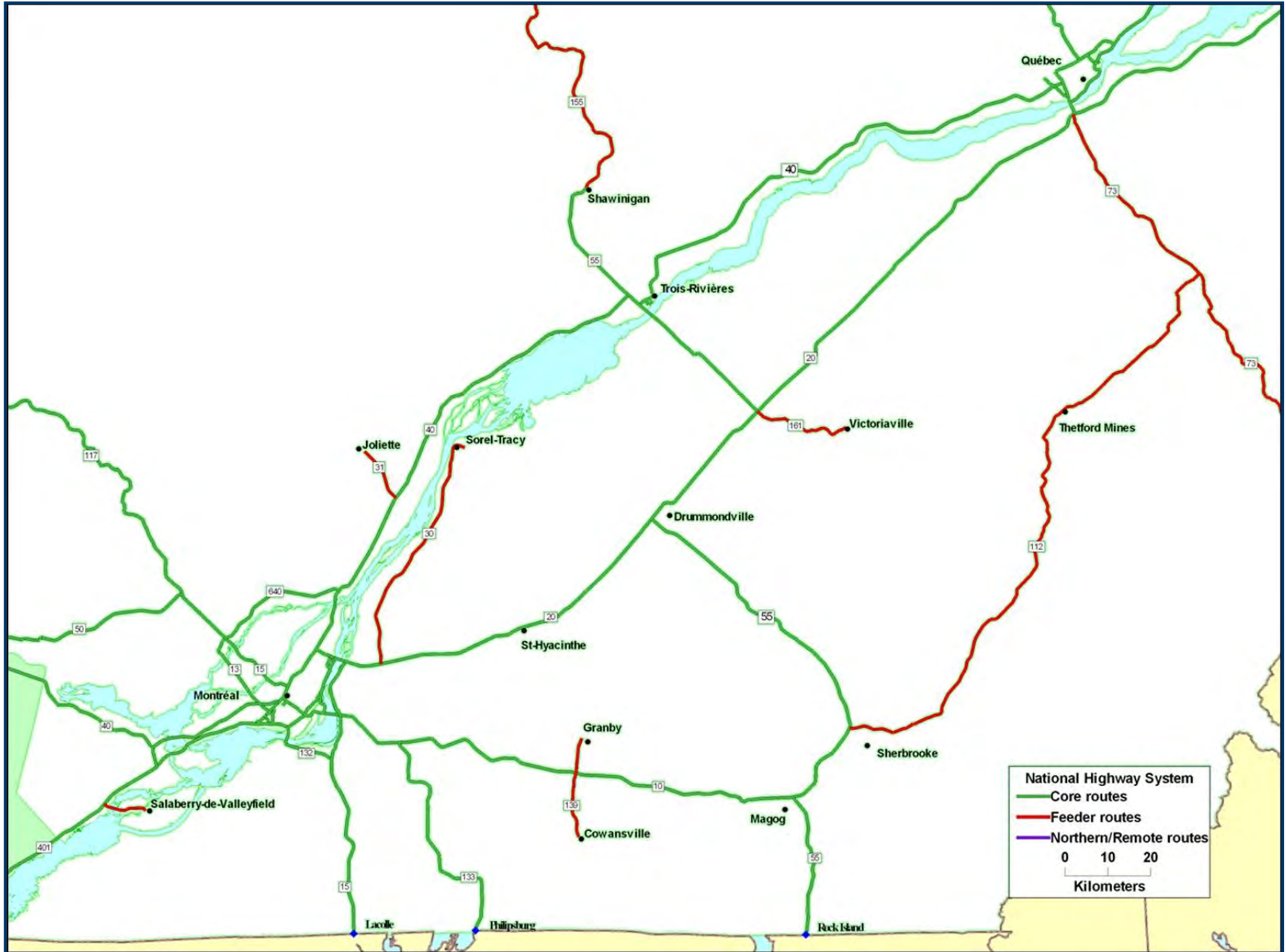




Ontario				Core	Feeder	Northern and Remote
Route	From	To	Length (km)	km	km	km
QEW	Fort Erie	Toronto	139.0	139.0		
401	Que. Border	Windsor	824.6	824.6		
402	London	U.S. Border (Sarnia)	103.0	103.0		
405	QEW	U.S. Border (Queenston-Lewiston Bridge)	9.0	9.0		
427	Hwy 401	QEW	8.0	8.0		
137	Highway 401	U.S. Border (Lansdowne)	4.0	4.0		
416	Ottawa (Jct. 417)	Hwy 401	76.0	76.0		
16	Hwy 401	U.S. Border (Prescott)	3.8	3.8		
417	Quebec Border	Reg. Rd 29 (Arnprior)	194.0	194.0		
400	Toronto (Jct. Hwy 401)	Parry Sound (IC-217)	225.1	225.1		
69	Parry Sound (IC-217)	Sudbury (Jct. Southwest Bypass)	139.9	139.9		
17	Reg. Rd 29 (Arnprior)	Manitoba Border	1,961.7	1,961.7		
66	Quebec Border	Kirkland Lake	58.4	58.4		
11	North Bay	Nipigon	991.5	991.5		
71	U.S. Border (Fort Frances)	Hwy 17	194.3	194.3		
61	U.S. Border (Pigeon River)	Thunder Bay (Jct. 17)	58.0	58.0		
403	QEW (Burlington)	Hwy 401 (Woodstock)	81.9	81.9		
11/400A	Barrie	North Bay	239.7	239.7		
35/115	Hwy 401	Peterborough (S Jct. Hwy 7/115)	44.8	44.8		
7/115	Peterborough (S Jct. Hwy 7/115)	Ottawa (Jct. Hwy 417)	319.0	319.0		
7/12	Peterborough (S Jct. Hwy 7/115)	Hwy 11	56.0	56.0		
12	N Jct. Hwy 11	Hwy 400	21.2	21.2		
26	Hwy 400 (Barrie)	Collingwood (County Road 19)	63.0	63.0		
06	Hwy 403 (Hamilton)	Highway 401 (Guelph)	25.9	25.9		
06	Highway 401 (Guelph)	Guelph (Woodlawn Rd.)	15.4	15.4		
07	Guelph (Woodlawn Rd.)	Kitchener (Conestoga Parkway)	20.8	20.8		
08	Kitchener (Conestoga Parkway)	Stratford (Erie)	52.5	52.5		
08	Hwy 401	Kitchener (Conestoga Parkway)	7.7	7.7		
108	Hwy 17	Elliot Lake (Hillside Dr.)	27.2	27.2		
34	Hwy 417	Hawkesbury (Quebec Border)	19.2	19.2		
17B	Hwy 17	U.S. Border (Sault Ste. Marie)	10.6	10.6		
03	Hwy 401	U.S. Border (Ambassador Bridge)	10.9	10.9		
3B	Hwy 401	U.S. Border (Detroit-Windsor Tunnel)	11.0	11.0		
420	QEW	U.S. Border (Rainbow Bridge)	4.7	4.7		
Nicholas/Rideau/King Edward	Hwy 417	Quebec Border (Gatineau)	4.0	4.0		
403	QEW	Hwy 401	20.9	20.9		
410	Hwy 401	Steeles Ave.	23.5	23.5		
427	Hwy 401	York Regional Road 7	12.1	12.1		
409	Hwy 401	Hwy 427	5.5	5.5		
6	Hwy 403	Hamilton Airport (Airport Rd.)	9.7	9.7		
Bronson/Airport Parkway	Hwy 417	Ottawa Airport	9.8	9.8		
Airport Rd./Oxford St. E	Hwy 401	London Airport	10.0	10.0		
RR7/RR50/Rutherford	Hwy 427	CP Intermodal Terminal (Vaughan)	6.0	6.0		

Ontario (continued)				Core	Feeder	Northern and Remote
Route	From	To	Length (km)	km	km	km
Steeles/Airport Rd/Intermodal Dr.	Hwy 410 (Bovaird Dr.)	CN Intermodal Terminal (Brampton)	7.1	7.1		
Derry Rd/Airport Rd/Intermodal Dr.	Hwy 427	Steeles Ave. - CN Intermodal Terminal (Brampton)	5.6	5.6		
Gardiner Expy/Kipling/Queen	Hwy 427	CP Obico Intermodal Terminal	3.5	3.5		
Trafalgar	Hwy 401	Derry Rd. - CP Expressway Intermodal Terminal	1.7	1.7		
RR7/Keele/Administration	Hwy 400	CN RoadRailer Intermodal Terminal (Vaughan)	4.3	4.3		
McCowan Road	Hwy 401	CP Expressway Intermodal Terminal (Scarborough)	1.6	1.6		
138	Hwy 401	Hwy 417	35.4		35.4	
138	U.S. Border (Cornwall)	Hwy 401 IC	7.7		7.7	
CR17	Hawkesbury E	Hwy 417	10.0		10.0	
144/101	Hwy 17 (Sudbury)	Timmins (Mountjoy St.)	271.7		271.7	
101	Timmins (Mountjoy St.)	Highway 11	61.9		61.9	
12	Hwy 400	Midland (Highway 93)	18.0		18.0	
10	Hwy 410 (Steeles Ave.)	Owen Sound (Highway 26)	123.0		123	
77	Hwy 401	Leamington (Highway 3)	22.6		22.6	
03	Leamington (Hwy 77)	Hwy 401	38.7		38.7	
19	Hwy 401	Tillsonburg (Vienna Rd.)	22.5		22.5	
24	Hwy 403	Simcoe (Hwy 3/Queensway Dr.)	36.2		36.2	
<b>Total</b>			<b>6,794.8</b>	<b>6,147.1</b>	<b>647.7</b>	<b>-</b>

# National Highway System – Southern Québec



Québec				Core	Feeder	Northern and Remote
Route	From	To	Length (km)	km	km	km
A10	A10, Rive sud de Montréal, est du pont Champlain	A10, jonction avec A55 à Sherbrooke	137.0	137.0		
A15	A15, frontière entre le Québec et New-York à St-Bernard-de-Lacolle jct I87	A15, Rive sud de Montréal, est du pont Champlain	53.8	53.8		
A15,117,101	A15, Île de Montréal, intersection avec la A20 et A720	A15, Intersection avec A40, échangeur Décarie	7.0	7.0		
	A15, Intersection A40, Échangeur de l'Acadie	A15, intersection avec 117	88.7	88.7		
	117, Fin A15, Ste-Agathe-des-Monts	117, Début tracé conjoint 101-117 à Rouyn-Noranda	532.5	532.5		
	101, Tracé conjoint 101-117 de Rouyn-Noranda à Artfield	101, Fin tracé conjoint	19.0	19.0		
	117, Artfield, intersection 117 et 101	117, Frontière de l'Ontario jct route 66	19.4	19.4		
A20	A20, Frontière de l'Ontario avec la route 401 à Rivière-Beaudette	A20, Île de Montréal, Échangeur avec A15 et A720	67.6	67.6		
	A15 Échangeur A20-A15-A720	A15, Ouest du pont Champlain	2.1	2.1		
	A15, approches ouest du pont Champlain	A15, début pont Champlain	3.2	3.2		
	A10, Pont Champlain	A10, approches est du pont Champlain	3.5	3.5		
	A10, approches est du pont Champlain	A10, Échangeur A10-A15-A20	1.0	1.0		
	A20, Rive sud de Montréal, Brossard	A20 à Rivière-du-Loup, intersection avec 185	423.0	423.0		
A85,185	Intersection avec la A20 à Rivière-du-Loup	Continuité sur 185	12.8	12.8		
	185,Jct avec A85	185, Frontière du Nouveau-Brunswick jct route 2	88.0	88.0		
A25	A25, intersection avec A20 à Longueuil	A25, intersection avec A40 à Anjou	8.1	8.1		
A35, 133	133, frontière du Vermont à Philipsburg jct I89	133, jonction avec A35 à St-Athanase	42.1	42.1		
	A35, jonction avec 133 à St-Athanase	A35, intersection avec A10 à Carignan	16.6	16.6		
A40	A40, frontière de l'Ontario à Pointe-Fortune	A40, intersection A55 à Trois-Rivières-Ouest	197.7	197.7		
	A55, tracé conjoint avec A40 à Trois-Rivières-Ouest	A55, fin tracé conjoint avec A40	3.5	3.5		
	A40, échangeur avec A55	A40, échangeur avec autoroute Dufferin l'ouest du pont de Île d'Orléan	141.6	141.6		
138	A40, échangeur autoroute Dufferin	A40, jonction avec 138 à l'est du pont de l'Île d'Orléan	2.2	2.2		
	138, jonction avec A40 à l'est du pont de l'Île d'Orléans	138, intersection avec la Rue Smith à Sept-Îles	629.4	629.4		
A73, 175	A73, échangeur avec A20 à Charny	A73, échangeur avec A40 à Ste-Foy	7.8	7.8		
	A73, fin tracé conjoint avec A40 à Québec	A73, jonction avec 175 à Stoneham-et-Tewkesbury	18.6	18.6		
	175, jonction A73 à Stoneham	175, échangeur avec A70 à Chicoutimi	178.9	178.9		
	175, échangeur avec A70 à Chicoutimi	175, intersection blv de L'Université Est	3.6	3.6		
A55	A55, frontière avec le Vermont à Stanstead	A55, échangeur avec A10, début tracé conjoint avec A10	34.5	34.5		
	A55, fin tracé conjoint avec A10	A55, échangeur avec A20, début tracé conjoint avec A20	71.2	71.2		

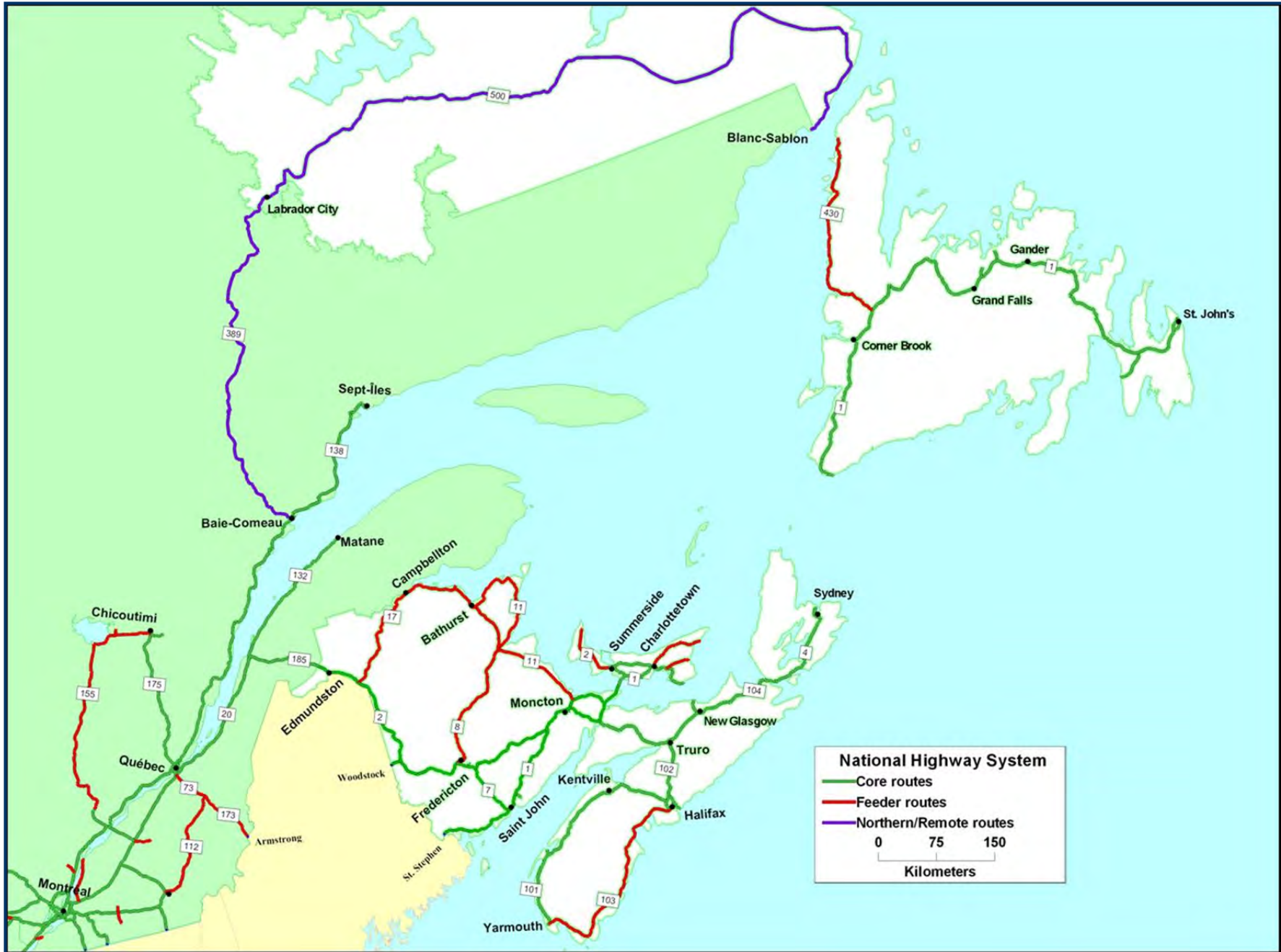
Québec (continued)				Core	Feeder	Northern and Remote
Route	From	To	Length (km)	Km	km	km
	A55, échangeur avec A20	A55, échangeur avec A40, début tracé conjoint avec A40	37.3	37.3		
A50	A50, échangeur A5 à Gatineau	A50, échangeur avec A15 à Mirabel	155.9	155.9		
A55	A55, échangeur avec A40 à Trois-Rivières-Ouest	A55, échangeur avec 8e rue à Grand-Mère (fin des chaussées séparées)	40.4	40.4		
A20,132	A20, échangeur avec 185 à Rivière-du-Loup	A20, jonction avec 132 à L'Isle-Verte	45.1	45.1		
	132, jonction avec A20 à L'Isle-Verte	132, jonction avec A20 à Le Bic	54.0	54.0		
	A20, jonction avec 132 à Le Bic	A20, intersection avec 132 à Mont-Joli	45.2	45.2		
	93861, jonction avec A20 à L'Isle-Verte	93861, intersection avec 132 à L'Isle-Verte	2.6	2.6		
	132, intersection avec A-20 à Mont-Joli	132, intersection avec 195 à Matane	59.9	59.9		
344	344, frontière de l'Ontario jct route 34	344, jonction de la 148 à Grenville	3.8	3.8		
A540	A540, échangeur avec A20 à Vaudreuil-Dorion	A540, échangeur avec A40 à Vaudreuil-Dorion	4.9	4.9		
A5	A5, Pont Mc-Donal-Cartier à Gatineau, jct ave King Edward en Ontario	A5, jonction avec A50 à Hull	1.8	1.8		
A640	A640, échangeur avec A40 à Terrebonne	A640, échangeur avec A13 à Boisbriand	34.9	34.9		
A13	A13, de l'échangeur avec la A40 à Montréal	A13, à l'échangeur avec la A640 à Boisbriand	15.0	15.0		
138	138, intersection avec la Rue Smith à Sept-Îles	138, intersection avec la Rue Retty à Sept-Îles	2.3	2.3		
	Port de Sept-Îles, rue Retty, intersection 138	rue Retty, Port de sept-Îles	1.4	1.4		
A13	A13, de l'échangeur avec A20 à Montréal	A13, à l'échangeur avec la A40 à Montréal	6.0	6.0		
A720	A720, Autoroute Ville-Marie, échangeur avec A15 et A20 à Montréal	A720, jonction avec boul. Notre-Dame à Montréal	8.1	8.1		
A10	A10, Autoroute Bonaventure, échangeur avec A15 à Montréal	A10, échangeur avec A720 à Montréal	4.5	4.5		
	Port de Montréal, accès ouest, rues Mill		0.7	0.7		
	rue de la Commune		1.8	1.8		
	rue Berri		0.1	0.1		
	rue Notre-Dame		1.2	1.2		
	boul. René-Lévesque		0.3	0.3		
	rue Viger		0.0	0.0		
	aut. Ville-Marie		1.6	1.6		
	rue de Lorimier		0.4	0.4		
	Port de Montréal accès est, rue Souigny		2.2	2.2		
	rues Des Futailles		0.9	0.9		
	rue Tellier		0.2	0.2		
	rue Dickson		1.1	1.1		
	rue De Boucherville		3.2	3.2		
	rue Curatteau		0.1	0.1		
	rue Souigny		0.2	0.2		

Québec (continued)				Core	Feeder	Northern and Remote
Route	From	To	Length (km)	km	km	km
	Accès au terminal intermodal du CN, rues Hickmore		0.3	0.3		
	rue Mc-Arthur		1.4	1.4		
	Accès au terminal intermodal du CFCP, rues Joseph Dubreuil	43e avenue, échangeur avec A520	0.3	0.3		
	46e Avenue		1.6	1.6		
	43e Avenue		0.6	0.6		
	Accès au service Expressway du CFCP, rue Paré, échangeur avec A15		0.0	0.0		
A520	A520, échangeur avec A20 à Montréal	A520, échangeur avec A40 à Montréal	7.5	7.5		
	A520, échangeur avec A40 à Montréal		0.4	0.4		
	Aéroport de Dorval-Trudeau, rue Roméo Vachon jonction avec bretelles de A520	rue Roméo-Vachon, aéroport de Dorval	0.6	0.6		
	rue Michel-Jasmin		0.3	0.3		
	Aéroport de Mirabel, rue locales	boul. Henri Fabre	2.4	2.4		
A40	Port de Trois-Rivières, boul. des Récollets, intersection avec boul. Royal	boul. des Récollets, intersection avec A40	1.5	1.5		
	boul. GENE-H.-KRUGER	boul. GENE-H.-KRUGER, intersection avec boul de Récollets	1.3	1.3		
	rue Normand		0.2	0.2		
	boul. Notre-Dame	intersection avec rue Lavérendrye	1.0	1.0		
A70, 170	A70, Port de Port-Saguenay, intersection avec 175 à Saguenay	170, Port-Saguenay	18.3	18.3		
A440	A440, jonction avec le boul. Dufferin à Québec	A440, jonction avec boul. Henri Bourassa	2.2	2.2		
	A440, jonction avec boul. Henri Bourassa	A440, jonction avec A40 à Beauport	6.5	6.5		
	Port de Québec Rive-nord, boul. Henri-Bourassa, échangeur avec A40		3.1	3.1		
	boul. Henri-Bourassa		0.9	0.9		
	boul. Henri-Bourassa		0.5	0.5		
136	Port de Québec, Vieux Québec, 136 boul. Champlain, intersection avec A73	136, changement de juridiction	8.7	8.7		
	Port de Québec Vieux Québec, 136 changement de juridiction	136, intersection avec 42330 ru du Marché-Champlain	3.0	3.0		
	Port de Québec Vieux Québec, 42330, intersection avec 136	42330, intersection avec A440	2.1	2.1		
A540	A540, Autoroute Duplessis, échangeur A73 à Québec	A540, échangeur A40 à Québec	3.5	3.5		
A540	Aéroport Jean-Lesage, A540, intersection avec A40	A540, jonction avec boul de l'Aéroport	1.4	1.4		
	Aéroport Jean-Lesage, boul. de l'Aéroport, jonction avec A540	boul. de l'Aéroport, intersection avec l'avenue Principale	1.6	1.6		
49454	Port de Baie-Comeau, route Maritime, intersection avec 138	route Maritime, intersection avec rue du Quai	3.8	3.8		



Québec (continued)				Core	Feeder	Northern and Remote
Route	From	To	Length (km)	Km	km	km
132,138	132, échangeur avec A15 à Candiac	132, Échangeur avec 138 au pont Honoré-Mercier	11.0	11.0		
	138, échangeur avec 132 au pont Honoré-Mercier	138, échangeur avec A20 à Montréal	4.9	4.9		
A55,155	A55, intersection avec 8e rue à Grand-Mère	A55, fin de l'autoroute	2.0		2.0	
	155, jonction A55 à Grand-Mère	155, intersection avec 169 à Chambord	248.8		248.8	
169,170	169, intersection avec 155 à Chambord	169, jonction avec 170 à Métabetchouan-Lac-à-la-Croix	20.1		20.1	
	170, jonction avec 169 à Métabetchouan-Lac-à-la-Croix	170, intersection avec 169 à St-Bruno	14.6		14.6	
	169, intersection 170 à St-Bruno (est)	169, intersection boul. Auger à Alma	8.9		8.9	
A70,170	170, intersection avec 169 à St-Bruno (ouest)	170, jonction avec A70 à Saguenay	25.1		25.1	
	A70, jonction avec 170 à l'ouest de Saguenay	A70, intersection 175 à Saguenay	22.5		22.5	
201	201, échangeur avec A20 à Coteau du lac	201, jonction avec 132 à Salaberry-de-Valleyfield	10.0		10.0	
	132, jonction avec 201 à Salaberry-de-Valleyfield	132, intersection avec A530	0.0		0.0	
A610,112	A610, jonction avec A10-A55 à Sherbrooke	A610, jonction avec 112 à Fleurimont	10.9		10.9	
	112, de jonction avec A10 à Fleurimont	112, jonction avec A73 à Vallée-Jonction	148.5		148.5	
A73,173	Nouvelle section de la 73 173, intersection avec 271 à St-Georges-de-Beauce	intersection de la 73 avec la R204 173, intersection avec route du Golf à Beauceville	17.9		17.9	
R204	intersection de la 73 avec la R204 173, intersection avec route du Golf à Beauceville	intersection avec A173 intersection avec A73	3.6		3.6	
	A73, intersection avec chemin Calway	A73, intersection avec A20 à Lévis	68.9		68.9	
A30	A30, échangeur A20 à Longueil	A30, intersection avec 133 (boul. Gagné) à Sorel	58.1		58.1	
A31	A31, échangeur avec A40 à Lavaltrie	A31, échangeur avec 158 à Joliette	14.3		14.3	
139	139, échangeur avec A10 à St-Alphonse	139, municipalité de Cowansville	15.4		15.4	
139	139, échangeur avec A10 à St-Alphonse	139, municipalité de Granby	8.2		8.2	
161	161, échangeur avec A20 à Sainte-Eulalie	161, intersection avec 122 à Victoriaville	22.2		22.2	
	79229 (rue des Bouleaux), intersection avec A-20	79372 (rang des Cèdres)	0.6		0.6	
	122, intersection avec 161 à Victoriaville	122, intersection rue Bois-Franc à Victoriaville	3.5		3.5	
173	173, de la frontière avec le Maine à St-Théophile	173, intersection avec 271 à St-Georges-de-Beauce	46.5		46.5	
109,111	111, Intersection avec 117 à Val-D'Or	111, intersection avec 109 à Amos	65.6			65.6
	109, intersection avec 111 à Amos	109, Matagami	183.3			183.3
	109, Matagami	109, Radisson (Aménagement Robert Bourrassa)	620.3			620.3
389	389, intersection avec 138 à Baie-Comeau	389, frontière avec le Labrador à Fermont	565.4			565.4
Total			5,647.4	3442.2	770.5	1434.7

## National Highway System – Eastern Québec and the Atlantic Provinces





New Brunswick				Core	Feeder	Northern and Remote
Route	From	To	Length (km)	km	km	km
2	Quebec Border	Nova Scotia Border	515.1	515.1		
1	Petitcodiac	U.S. Border (St. Stephen)	240.0	240.0		
7	Hwy 1 (Saint John)	Hwy 2 (Fredericton)	76.5	76.5		
16	Hwy 2	Mid-point Confederation Bridge	58.1	58.1		
15	Moncton	Port Elgin	59.5	59.5		
95	Hwy 2	U.S. Border (Woodstock)	14.4	14.4		
Municipal streets	Hwy 1	Port of St. John - East side	6.7	6.7		
Municipal streets	Hwy 1	Digby Ferry/Port of St. John - West side	2.6	2.6		
111	Hwy 1	St. John Airport	9.6	9.6		
Nevers Road/Route 102	Hwy 2	Fredricton Airport	5.8	5.8		
Route 15/ Harrisville/ Dieppe/Route 132	Hwy 2	Moncton Airport	6.2	6.2		
Route 11	Bathurst	Campbellton	106.5		106.5	
Route 17	Campbellton	St. Leonard	147.1		147.1	
8	Bathurst	Miramichi	70.2		70.2	
11	Miramichi	Hwy 15 (Shediac)	122.0		122.0	
8	Fredericton	Miramichi	180.0		180.0	
11	Acadian Peninsula		176.7		176.7	
Turgeon Rd./134	Hwy 11	Port of Belledune	4.7		4.7	
Total			1,801.7	994.5	807.2	-

Nova Scotia				Core	Feeder	Northern and Remote
Route	From	To	Length (km)	km	km	km
101	Bedford	Yarmouth (Ferry Terminal)	309.2	309.2		
102	Halifax	Truro (Hwy 104)	102.4	102.4		
104	N.B. Border	Port Hastings (Jct. Hwy 105)	274.9	274.9		
104/4	Port Hastings (Jct. Hwy 105)	Sydney (Hwy 125)	130.0	130.0		
125/105	Sydney (Hwy 125)	North Sydney ferry terminal	22.5	22.5		
118	Hwy 102	Hwy 111	14.7	14.7		
111	Hwy 118	Victoria Rd.	3.0	3.0		
303	Digby (Jct. 101)	Digby ferry terminal	7.5	7.5		
106	Hwy 104	Caribou ferry terminal	18.5	18.5		
Joseph Howe/Kempton/Barrington/Lower Water/Hollis	Hwy 102	Port of Halifax	12.0	12.0		
111/Pleasant/Eastern Passage	Hwy 118	Autoport terminal entrance	10.0	10.0		
103	Halifax (Jct. Hwy 102)	Yarmouth (Jct. Hwy 101)	294.3		294.3	
			1,199.0	904.7	294.3	-

Prince Edward Island				Core	Feeder	Northern and Remote
Route	From	To	Length (km)	km	km	km
1	Borden	Wood Islands	120.5	120.5		
Confederation Bridge	Midpoint of bridge span	Borden	7.9	7.9		
2	Summerside (Slemon Park Boundary)	Charlottetown (Perimeter Hwy)	58.8	58.8		
1A	Summerside (Hwy 2)	Albany (Route 1)	20.3	20.3		
Brackley Point Rd.	Hwy 1	Charlottetown Airport (Sherwood Rd.)	1.2	1.2		
2	Summerside (Slemon Park Boundary)	Tignish (Hwy 153)	77.2		77.2	
2	Charlottetown (Route 1, Perimeter Hwy)	Souris (MacPhee Ave.)	78.6		78.6	
3	Cherry Valley (Route 1)	Georgetown (Water St.)	33.7		33.7	
<b>Total</b>			<b>398.2</b>	<b>208.7</b>	<b>189.5</b>	<b>-</b>

Newfoundland and Labrador				Core	Feeder	Northern and Remote
Route	From	To	Length (km)	km	km	km
1	Port-aux-Basques	St. John's (Logy Bay Rd.)	911.0	911.0		
100	TCH	Argentia Ferry	44.0	44.0		
2	TCH	Port of St. John's	14.8	14.8		
Portugal Cove Rd/Route 40	TCH	St. John's Airport	1.3	1.3		
Lewin Parkway (Route 450A)	TCH	Port of Corner Brook	3.9	3.9		
340	TCH	Lewisporte Marine Terminal	15.0	15.0		
350	TCH	Botwood	17.6	17.6		
Route 430	TCH at Deer Lake	Ferry terminal at St. Barbe	298.0		298.0	
500	Quebec border	Labrador City (Avalon Dr.)	19.0			19.0
500/510	Labrador City (Avalon Dr.)	Blanc Sablon	1,144.0			1142.0
<b>Total</b>			<b>2,468.6</b>	<b>1,007.6</b>	<b>298.0</b>	<b>1,161.0</b>