

Task Force on Vehicle Weights and Dimensions Policy

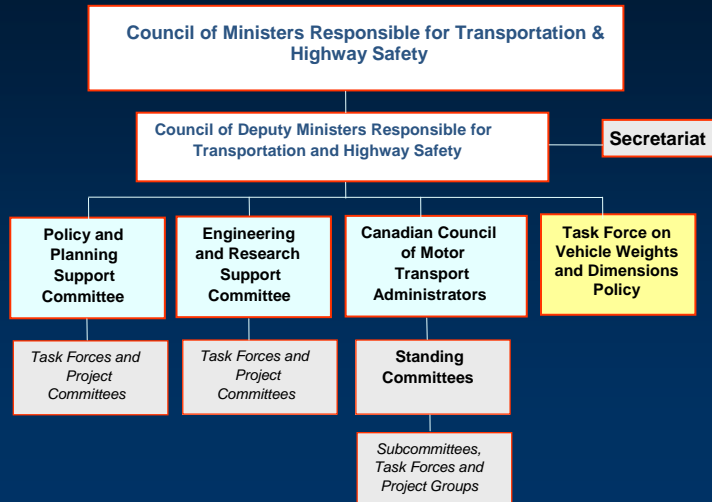
Status Report

November 2008

Vehicle Weights and Dimensions

- Task Force on Vehicle Weights and Dimensions Policy
 - Focus for coordination and harmonization of provincial and territorial regulations, policies and practices
 - Annual meetings to exchange information, review emerging issues, identify problems
 - Last meeting held in Montreal in November 2006
 - Information: www.comt.ca

Council of Ministers Organization



Annual Meeting Fall 2006 Harmonization Priorities: Fuel Efficiency

Stakeholder Recommendations

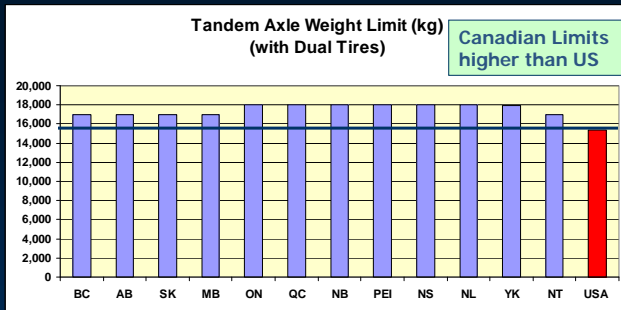
- allow the use of the new generation of wide-base single truck tires at the same allowable weights as dual tires.
- allow flexibility within the provincial truck dimensions standards to add non-payload aerodynamic improvements to their equipment.
- all provinces and territories should grant a weight exemption of up to 181 kg (400 lbs.) for trucks equipped with an auxiliary power unit (APU).
- allow a weight allowance on a truck's maximum gross vehicle weight of up to 181 kg (400 lbs) on 2007-2010 trucks to eliminate the payload penalty associated with particulate traps.

Harmonization Priorities: National Guidelines for Additional Vehicle Configurations

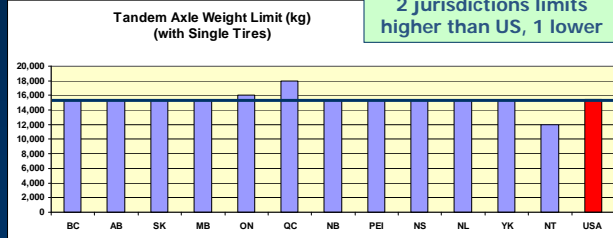
Interest in developing greater consistency in specifications for vehicle configurations used in different regions:

- Vehicles not currently addressed by MOU:
 - Tractor Semitrailer Configuration with tridem drive tractor
 - Tractor Semitrailer Configuration with quad axle semitrailer
 - Tractor Semitrailer Configuration with self-steer triaxle
 - Four Axle Straight Truck Configurations
 - Stinger steer automobile carriers

- Special Permits: Long Combination Vehicles
 - Turnpike Double Trailer Combinations
 - Rocky Mountain Double Trailer Combinations



Current
Regulated
Weight Limits



MOU Amendment:

Weight Increase for New Generation Wide Single Tires

Weight Limits for New Generation Wide Base Single Tires:

Addition of new clause:

- **10.** Its axle weights, when an axle is fitted with two single tires, each of which has a width of 445 mm or greater, do not exceed 7700 kg for single axles and 15,400 kg for tandem axle groups.

MOU Amendment:

Retrofitting Existing Trailers with New Generation Wide Single Tires

Appendix E: Interpretations and Clarifications

6. Minimum Track Width for Trailer Axles Fitted With Single Tires :

It is understood that the minimum track width for trailer axles fitted with single tires must be no less than 2.3 m for trailers built in 2007 or earlier.

It is further understood that the minimum track width for all axles on trailers built in 2008 or later must be no less than 2.5 m.

MOU Amendment:
Allowance for Aerodynamic Devices on Rear of Trucks and Trailers

Appendix E: Interpretations and Clarifications

4. All Categories – Aerodynamic Devices Fitted on Rear of Vehicles:

It is understood that aerodynamic devices installed at the rear of trucks, trailers and semitrailers shall not be included in the measurement of overall length, trailer length, semitrailer length, box length and effective rear overhang, provided:

- any portion of the device more than 1.9 metres above the ground does not protrude more than 0.61 metres beyond the rear of the vehicle, and
- any portion of the device within 1.9 metres of the ground does not protrude more than 0.305 metres beyond the rear of the vehicle, and
- the aerodynamic device is not designed or used to carry cargo.

It is further understood that vehicles fitted with aerodynamic devices must also comply with applicable CMVSS standards and provincial/territorial regulations regarding lighting and conspicuity.

MOU Amendment:
Standardization of Width Allowances for Mirrors and Other Equipment

Appendix E: Interpretations and Clarifications

5. All Categories – Exclusions from Determination of Overall Width (October 2007):

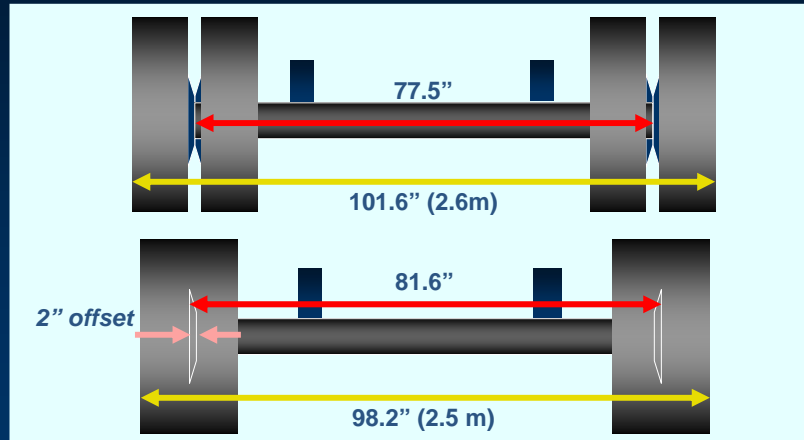
It is understood that auxiliary equipment and/or devices not designed or used to carry cargo which do not extend more than 10 cm beyond each side of the vehicle shall be excluded from measurements of overall width.

It is further understood that rear view mirrors which do not extend more than 30 cm beyond each side of the vehicle shall be excluded from measurements of overall width

Track Width Regulations

National Standards: Width Across Tires

- Maximum: 2.6 m
- Minimum: 2.5 m



Implication: Replacing dual tires with single tire requires rim offset or spacers to meet minimum track width of 2.5 m.

Aerodynamic Devices

- estimated to improve fuel efficiency by up to 5%
- additional length conflicts with regulated dimension limits



MOU Recommendations Summary

- Proposed changes to MOU for consideration by Council of Ministers:
 - Weight limit on single tires
 - Accommodation of aerodynamic devices within dimension limits
 - Standardized definition for items permitted in 10 cm width limit exclusion & extension of mirrors