



# TASK FORCE ON VEHICLE WEIGHTS AND DIMENSIONS POLICY

---

November 2019

# Task Force on Vehicle Weights and Dimensions Policy

- National forum for coordination and harmonization of provincial and territorial regulations, policies and practices
  - Representatives from each of the federal, provincial and territorial transportation departments
- Advance recommendations on:
  - Regulatory harmonization priorities
  - Amendments to the standards contained in the National MOU on Vehicle Weights and Dimensions

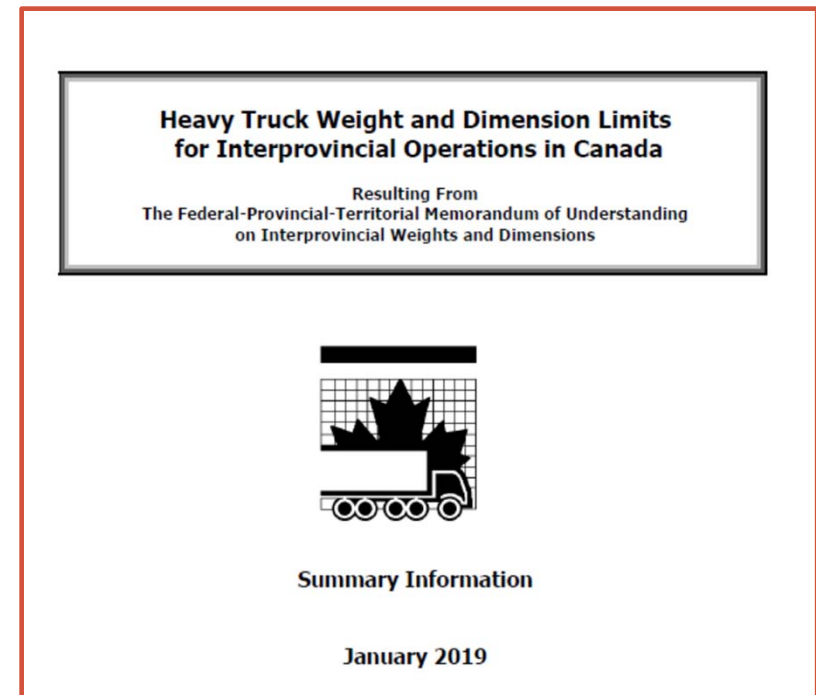
# Vehicle Weights and Dimensions

- Annual meetings to exchange information, review emerging issues, identify harmonization concerns and priorities
- Information: [www.comt.ca](http://www.comt.ca)
  - Standards and regulations
  - Government contacts
  - Meetings and minutes
  - Research reports and reference materials



## National Standards for Weights and Dimensions

- ***National Agreement (MOU) established in 1988***
  - founded on major research program and developed in partnership with industry
- ***Standards Evolution***
  - Task Force on Vehicle Weights and Dimensions Policy
    - Provides ongoing national forum for discussions with stakeholders on harmonization needs and priorities
    - Government/Industry consensus has resulted in expansion of, and amendments to, the MOU 10 times since 1988
      - 1991, 1994, 1997, 2001, 2004, 2009, 2011, 2014, 2016 & 2019



## Premiers News Release - December 2018

- *Provinces and territories have agreed in principle to allow the use of wide-base single tires at weight parity with conventional dual tires on all major trade routes in Canada by the end of 2019.*
  - *Given the different geographic and climate conditions across Canada, some jurisdictions may do so through a permit-based system.*



## Amendments to MOU January 2019

### 1. Provision to Allow Weight Limit Parity for Wide Base Single Tires and Dual Tires



Conventional Dual Tires



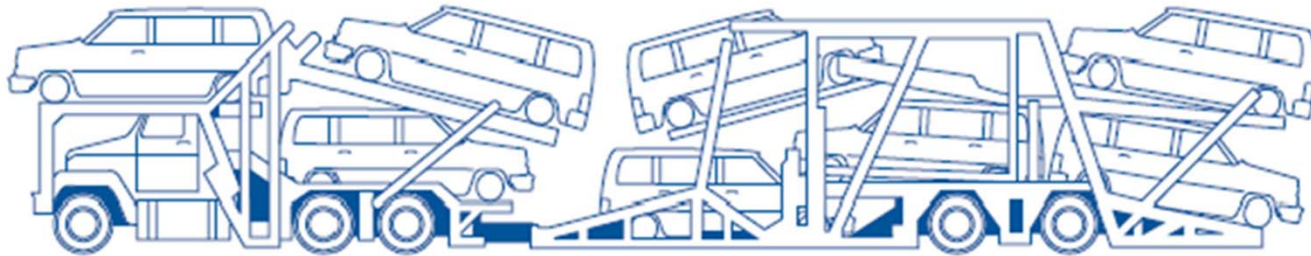
Wide Base Single Tires

- The Council of Ministers Responsible for Transportation and Highway safety approved amendments to the MOU to provide the same weight limits for WBST (with widths of 445 mm or greater) as for axles fitted with conventional dual tires.
- In addition, under the Canadian Free Trade Agreement a Reconciliation Agreement addressing weight limit parity for WBST was also approved in early 2019.

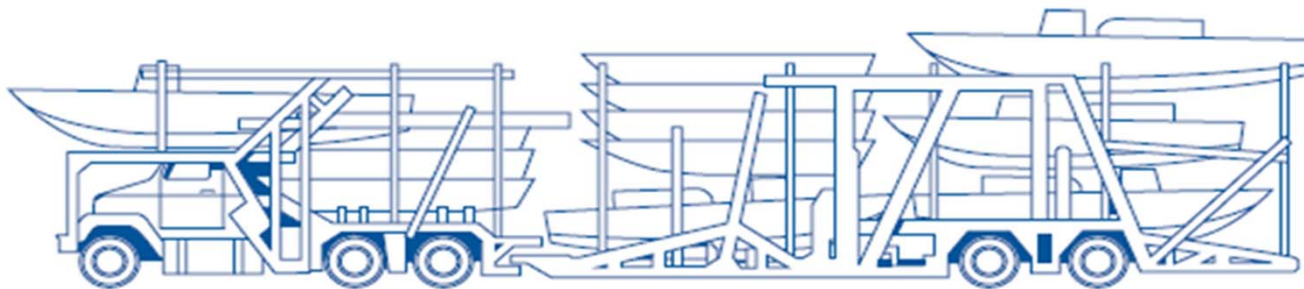
## Amendments to MOU January 2019

2. Provision to Allow Boats to be Transported in Category S1 – Stinger Steer Automobile Carrier

### ***Stinger Steer Automobile Carrier***



### ***Stinger Steer Boat Carrier***



## Dimension Limits

Dimension Limits (metres)

	MOU	YK	NT	BC	AB	SK	MB	ON	QC	NB	NS	PE	NL
<b>Overall Height</b>	4.15	4.2	4.2	*	*	*	*	*	*	*	*	*	*
<b>Overall Width</b>	2.6	*	*	*	*	*	*	*	*	*	*	*	*
<b>Overall Length</b>													
Straight Truck	12.5	*	*	*	*	*	*	*	*	*	*	*	*
Truck & Full Trailer	23	*	*	*	*	*	*	*	*	*	*	*	*
Truck & Pony Trailer	23	*	*	*	*	*	*	*	*	*	*	*	*
Tractor Semitrailer	23	*	25	*	*	*	*	*	*	*	*	*	*
A Train Double	25	*	26	26	26	26	*	*	*	*	*	*	*
B Train Double	27.5	*	*	*	*	*	*	*	*	*	*	*	*
C Train Double	25	*	26	26	26	26	*	*	*	*	*	*	*
<b>Trailer Length</b>													
Full Trailer	12.5	*	*	*	*	*	*	*	14.65	*	*	*	*
Semitrailer	16.2	*	*	*	*	*	*	*	*	*	*	*	*
<b>Box Length</b>													
Truck & Full or Pony Trailer	20	*	*	*	*	*	*	*	*	*	*	*	*
A Train Double	20	*	*	*	*	*	*	*	*	*	*	*	*
B Train Double	20	*	*	*	*	*	*	*	*	*	*	*	*
C Train Double	20	*	*	*	*	*	*	*	*	*	*	*	*
<b>Effective Rear Overhang</b>													
Straight Truck	4	*	*	*	*	*	*	*	*	*	*	*	*
Semitrailer	35% of wb	*	*	*	*	*	*	*	*	*	*	*	*
<b>Wheelbase</b>													
Tractor (min)	3	*	*	*	*	*	*	*	*	*	*	*	*
Tractor (max) <sup>1</sup>	6.2	NR	*	*	*	*	*	*	*	*	*	*	*
Full Trailer (min)	6.25	*	*	*	*	*	*	*	*	*	*	*	*
Semitrailer (max)	12.5	*	*	*	*	*	*	*	*	*	*	*	*
Semitrailer (min)	6.25	*	*	*	*	*	*	*	*	*	*	*	*

Legend: \* = Same as MOU    Atlantic Regional Harmonization    Western Regional Harmonization



## Weight Limits

Weight Limits (kilograms)

Gross Vehicle Weight	MOU	YK	NT	BC	AB	SK	MB	ON	QC	NB	NS	PE	NL
Truck - 3 axles	24,250	28,200	24,300	26,000	24,300	24,300	24,300	28,100 <sup>1</sup>	25,250	26,000	26,000	26,000	26,000
Tractor Semitrailer	- 3 axles	23,700	26,000	*	24,200	24,200	24,200	27,700	25,500	*	*	*	*
	- 4 axles	31,600	35,100	*	32,800	32,100	32,100	36,800	33,500	32,600	32,600	32,600	32,600
	- 5 axles	39,500	44,200	*	40,000	40,000	40,000	45,900	41,500	41,500	41,500	41,500	41,500
	- 6 axles	46,500	49,100	*	47,000	47,000	47,000	52,800	49,500	49,500	49,500	49,500	49,500
A Train	- 5 axles	41,900	45,500	*	42,400	42,400	42,400	*	45,500	*	*	*	*
	- 6 axles	49,800	53,500	*	50,300	50,300	50,300	*	53,500	50,800	50,800	50,800	50,800
	- 7 axles	53,500	*	*	*	*	*	*	*	*	*	*	*
	- 8 axles	53,500	*	*	*	*	*	*	*	*	*	*	*
B Train	- 6 axles	48,600	54,200	*	49,100	49,100	49,100	55,900	53,000	50,600	50,600	50,600	50,600
	- 7 axles	56,500	63,300	*	57,000	57,000	57,000	60,800	59,000	59,500	59,500	59,500	59,500
	- 8 axles	62,500	63,500	63,500	63,500	63,500	63,500	63,500	*	*	*	*	*
C Train	- 5 axles	41,900	45,500	*	42,400	42,400	42,400	*	45,500	*	*	*	*
	- 6 axles	49,800	54,600	*	50,300	50,300	50,300	*	53,500	50,800	50,800	50,800	50,800
	- 7 axles	54,600	60,500	*	57,700	57,700	60,500	60,500	55,500	55,600	55,600	55,600	55,600
	- 8 axles	58,500	60,500	*	60,500	60,500	60,500	60,500	*	*	*	*	*
Truck & Pony Trailer - 6 axles	45,250	52,200	48,300	47,000	45,300	45,300	45,300	54,100	49,500	47,000	47,000	47,000	47,000
Truck & Full Trailer - 5 axles	41,250	47,300	41,300	43,000	42,500	41,300	41,300	46,100	43,500	43,000	43,000	43,000	43,000
Truck & Full Trailer - 7 axles	53,500	59,200	*	57,000	55,300	55,300	55,300	63,500	55,500	*	*	*	*
<b>Axle loads</b>													
Steering Axle - Tractors	5,500	*	*	6,000	6,000	6,000	6,000	7,700	*	*	*	*	*
Steering Axle - Trucks	7,250	7,300	7,300	7,300	7,300	7,300	7,300	9,000	*	8,000	8,000	8,000	8,000
Single Axle - dual tires	9,100	10,000	*	*	*	*	*	10,000	10,000	*	*	*	*
Single Axle - wide single tires	7,700	*	6,000	*	*	*	9,100	9,000	10,000	*	*	*	*
Tandem Axle - dual tires	17,000	17,900	*	*	*	*	*	18,000	18,000	18,000	18,000	18,000	18,000
Tandem Axle - wide single tires	15,400	*	12,000	*	*	*	17,000	18,000	18,000	*	*	*	*
Tridem - 2.4 m spread	21,000	24,000	*	24,000	*	*	*	21,300	*	*	*	*	*
Tridem - 3.0 m spread	23,000	24,000	24,000	24,000	24,000	24,000	*	24,000	24,000	24,000	24,000	24,000	24,000
Tridem - 3.7 m spread	24,000	*	*	*	*	*	*	26,000	26,000	26,000	26,000	26,000	26,000

Legend: \* = Same as MOU    Atlantic Regional Harmonization    Western Regional Harmonization

# **Vehicle Weights and Dimensions**

Status of Implementation of MOU Amendments 2014, 2016 & 2019

---

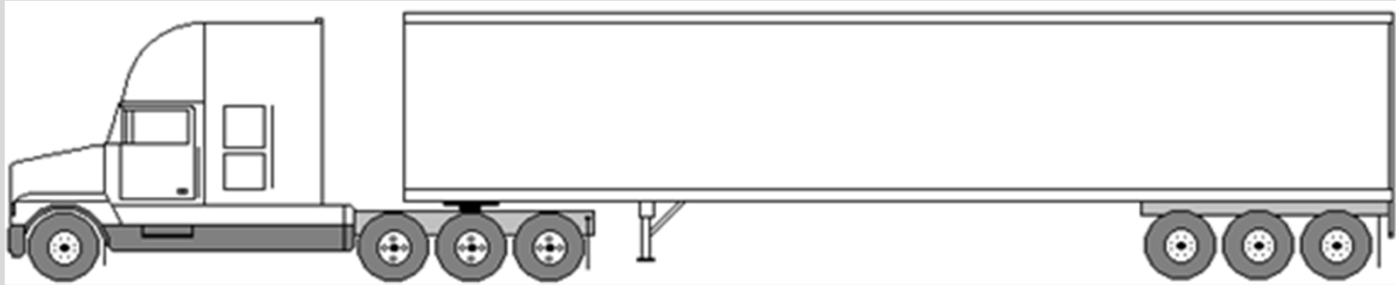
**November 2019**

## **MOU Amendments October 2014**

1. Addition of the Tridem Drive Tractor – Semitrailer Configuration as a new MOU Category
2. Increase in the Allowable Size of Aerodynamic Devices on Rear of Trucks and Trailers from 0.61 metres to 1.52 m
3. Increase in the Overall Length Limit for B Train Double Trailer Combinations from 25 m to 27.5 metres

# Tridem Drive Tractor Semitrailer Configuration

(MOU Amendment 2014)



Jurisdiction	Allowed by Regulation	Allowed by Permit	Allowed by Admin Policy
NL			
NS			
PE			
NB			
QC			
ON			
MB			
SK			
AB			
BC			
NT			
YK			

# Aerodynamic Devices – Larger Boat Tails

(MOU Amendment 2014)

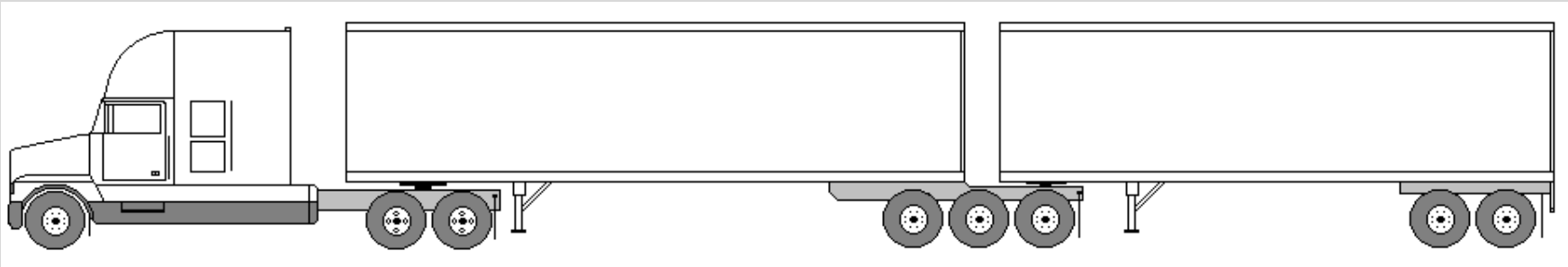


Aerodynamic devices installed at the rear of the vehicle can extend up to 1.52 m

Jurisdiction	Allowed by Regulation	Allowed by Permit	Allowed by Admin Policy
NL			
NS			
PE			
NB			
QC			
ON			
MB			
SK			
AB			
BC			
NT			
YT			

# Increased Length Limit for B Trains 27.5 m

(MOU Amendment 2014)



Overall Length

Jurisdiction	Allowed by Regulation	Allowed by Permit	Allowed by Admin Policy
NL			
NS			
PE			
NB			
QC			
ON			
MB			
SK			
AB			
BC			
NT			
YK			

## **MOU Amendments September 2016**

1. Provision to Allow Longer Wheelbase Tractors on Category 1: Tractor Semitrailer Configurations (up to 7.2 m)
2. Provision to Allow Longer Wheelbase Tractors on Category 3: B Train Double Configurations (up to 6.8 m)

# Longer Wheelbase Tractors – Tractor Semitrailer (MOU Amendment 2016)

The tractor wheelbase can be up to 7.2 m in a Tractor-Semitrailer configuration, provided the wheelbase of the semitrailer is reduced in accordance with the following table:

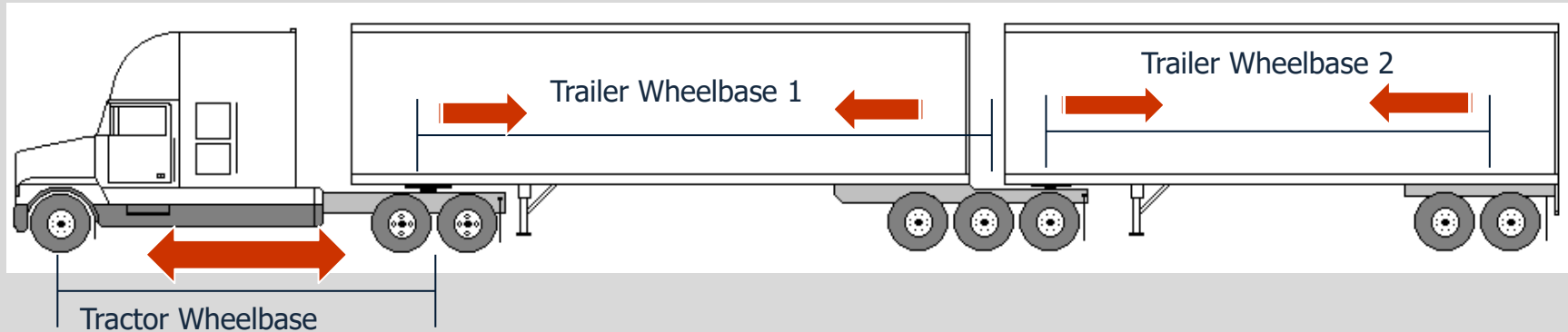


Tractor Wheelbase	Maximum Semitrailer Wheelbase
6.2 m or less	≤ 12.50 m
> 6.2 m to 6.3 m	≤ 12.47 m
> 6.3 m to 6.4 m	≤ 12.40 m
> 6.4 m to 6.5 m	≤ 12.33 m
> 6.5 m to 6.6 m	≤ 12.27 m
> 6.6 m to 6.7 m	≤ 12.20 m
> 6.7 m to 6.8 m	≤ 12.13 m
> 6.8 m to 6.9 m	≤ 12.07 m
> 6.9 m to 7.0 m	≤ 12.00 m
> 7.0 m to 7.1 m	≤ 11.93 m
> 7.1 m to 7.2 m	≤ 11.87 m

Jurisdiction	Allowed by Regulation	Allowed by Permit	Allowed by Admin Policy
NL			
NS			
PE			
NB			
QC			
ON			
MB			
SK			
AB			
BC			
NT			
YT			



# Longer Wheelbase Tractors - B Train (MOU Amendment 2016)



The tractor wheelbase can be up to 6.8 m in a B Train Double configuration, provided the sum of the wheelbases of the semitrailers is reduced in accordance with the following table:

Tractor Wheelbase	Maximum Sum of Semitrailer Wheelbases
6.2 m or less	≤ 17.00 m
> 6.2 m to 6.3 m	≤ 16.53 m
> 6.3 m to 6.4 m	≤ 16.44 m
> 6.4 m to 6.5 m	≤ 16.36 m
> 6.5 m to 6.6 m	≤ 16.27 m
> 6.6 m to 6.7 m	≤ 16.19 m
> 6.7 m to 6.8 m	≤ 16.10 m

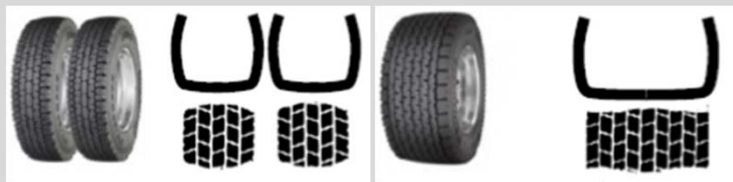
Jurisdiction	Allowed by Regulation	Allowed by Permit	Allowed by Admin Policy
NL			
NS			
PE			
NB			
QC			
ON			
MB			
SK			
AB			
BC			
NT			
YT			

## **MOU Amendments January 2019**

- Provision to Allow Weight Limit Parity for Wide Base Single Tires (445 mm wide and greater) and Dual Tires
- Provision to Allow Boats to be Transported in Category S1 – Stinger Steer Automobile Carrier

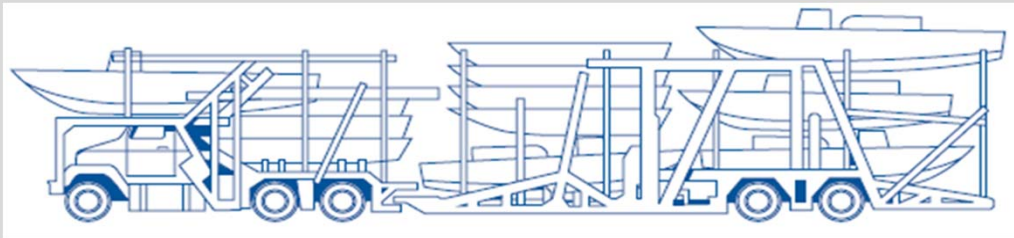
## Wide Base Single Tires – Weight Limit Parity with Dual Tires (MOU Amendment 2019)

<b>Maximum Tire Loading</b>	10 kg/mm		
<b>Maximum Axle Loading</b>	<b>Dual Tires</b>	<b>WBST 445 mm</b>	<b>WBST 455 mm</b>
<b>Single Axle</b>	9100 kg	8900 kg	9100 kg
<b>Tandem Axle:</b>			
<i>Spread - 1.2 m to 1.85 m</i>	17,000 kg	17,000 kg	17,000 kg
<b>Tridem Axle:</b>			
<i>Spread - 2.4 m to &lt; 3.0 m</i>	21,000 kg	21,000 kg	21,000 kg
<i>Spread - 3.0 m to &lt; 3.6 m</i>	23,000 kg	23,000 kg	23,000 kg
<i>Spread - 3.6 m to 3.7 m</i>	24,000 kg	24,000 kg	24,000 kg



Jurisdiction	Allowed by Regulation	Allowed by Permit	Notes
NL			
NS			<i>Reg change pending</i>
PE			<i>Reg change pending</i>
NB			<i>Reg change pending</i>
QC			<i>Reg update pending</i>
ON			
MB			
SK			
AB			<i>Reg change pending</i>
BC			<i>Reg update pending</i>
NT			
YT			

## Category S1 – Stinger Steer Automobile or Boat Carrier (MOU Amendment 2019)



Transportation of Boats

Jurisdiction	Allowed	Pending
NL		
NS		
PE		
NB		
QC		
ON		
MB		
SK		
AB		
BC		
NT		
YT		